

i6300 Rugged Smartphone

5" HD / 4G / Safedroid OS / 1D or 2D barcode scanner
IP 65 / 1.5m drop test



Advance capacitive screen

5" HD (720×1280)
Industrial grade sensitivity, works with gloves

Powerful data collection

1D or 2D scan engine
8MP rear camera and 2MP front camera
Supports NFC

Elegant appearance, industrial reliability

Stylish, modern look and feel
IP65 rating
1.5m drop tested

Fast data connectivity

802.11a/b/g/n/ac* WiFi
2G/3G/4G cellular radio
Bluetooth 4.1 BLE

Enterprise security

Supports Safedroid OS
Supports MDM

Elegant appearance, industrial reliability

3.8V, 4000mAh battery ensures long operation hours
Pogo pin design for simple and non-intrusive charging

i6300 Rugged Smartphone

Basic Characteristics

O.S.	Android 7.1
CPU	Quad-Core 1.4GHz Octa-Core 1.4GHz(Advanced)
Display	5.0 inch TFT-LCD HD (720 x 1280) color screen
RAM	2GB
ROM	16GB
Dimensions	152mm x 78 mm x 15mm
Weight	283g (Battery included)
Buttons	Side: Scan button x 2, volume up/down button, power button, custom button
Input	Chinese / English, and supports handwriting and soft keyboard
Barcode Scanner	1D Laser/2D Imager

Radio Communication

Wi-Fi	IEEE 802.11 a/b/g/n IEEE 802.11 a/b/g/n/ac(Advanced)
Bluetooth	Bluetooth 4.1 BLE
Chinese version	4G FDD-LTE (B1/B3/B7/B8) TDD-LTE (B38/B39/B40/B41)
	3G WCDMA(B1/B5/B8) TD-SCDMA(B34/B39) CDMA EV-DO Rev. A(800MHz)
	2G GSM/EDGE/GPRS (850/900/1800) CDMA1x
International version (Advanced)	4G FDD-LTE (B1/B2/B3/B4/B5/B7/B8/B20 /B28A/B28B)
	3G WCDMA(B1/B2/B4/B5/B8)
	2G GSM/EDGE/GPRS (850/900/1800/ 1900MHz)

Expansion and Peripherals

Camera	8MP AF color rear camera with flash 2MP front-facing camera
GPS	GPS, Supports A-GPS, GLONASS, BD system
Slot	Micro SD/TF x 1(a maximum of 128 GB), SIM x 2
Interfaces	Micro USB x 1
Audio	Speaker, Buzzer, MicroPhone
Sensor	Light sensor,Range sensor, Acceleration sensor, Gyroscope

Power

Main Battery	Rechargeable 3.8V, 4000mAh lithium polymer battery pack (Typical Operation time ≥8 hours)
RTC Battery	Real time clock battery

Accessories

Standard	Power adaptor, USB Cable, One battery.
Optional	Scan Trigger Handle with Charger,Cradle, Case & Hand Strap, Lanyard

User Environment

Operating Temperature	-10℃ ~ 50℃ (14~122°F)
Storage Temperature	-40℃ ~ 70℃ (-40~158°F)
Humidity	5% ~ 95% (non condensing)
Drop Durability	1.5m
IP Sealing	65

Kreski

Zapraszamy do kontaktu!
Więcej informacji: www.kreski.pl

Optional Accessory



Scan Trigger Handle with Charger



Case & Hand strap



Lanyard



Cradle



i6300 Smart Phone
Quick Start Guide

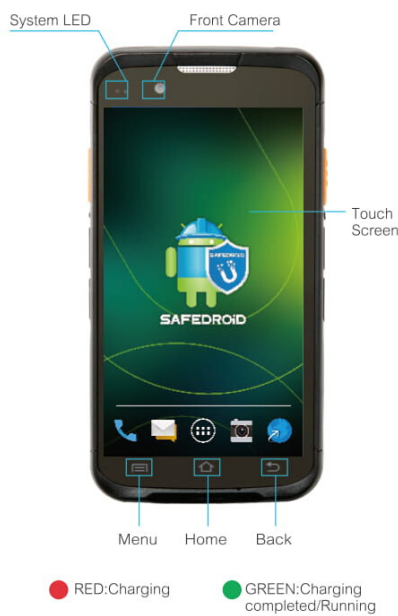
1

Unpacking

1. Carefully remove all protective material from the i6300 and save the shipping container for later storage and shipping.
2. Verify that the following were received:
 - Quick start guide x1
 - Power adapter x1
 - USB data cable x1
 - i6300 Smart Phone x1
 - 4000mAh Lithium-ion battery
3. Inspect the equipment for damage. If any equipment is missing or damaged, contact the local service center immediately.
4. Prior to using the i6300 for the first time, remove the protective shipping film that covers the display window.

Appearance and Buttons

Front view



2

Back view



Side view



3

Features

Power button: Turns the display on and off. Press and hold to reset the device, power off or swap battery.
Speaker: Provides audio out-put for video and music playback.
Touch screen: Displays all information needed to operate
Battery connector: Pull up to remove the battery
Notification LED: Indicates system status while application generated notifications(programmable).
Charging LED: Indicates battery charging status while charging.
Camera: Takes photos and videos.
Camera Flash: Provides illumination for the camera.
Volume Button: Increase and decrease audio volume.
Scan Button: Be triggered to activate the scanner
User-defined Button: The key value can be programmed by user.

Forced restart: Press and hold the 'Power button' at least 8 seconds.

Indicators

Battery	<input type="checkbox"/>	Power high/AC adaptor Connected without battery inside
	<input type="checkbox"/>	Power medium
	<input type="checkbox"/>	Charging while Battery is medium or low
Network signal strength	<input type="checkbox"/>	Power low
	<input checked="" type="checkbox"/>	Good signal
	<input checked="" type="checkbox"/>	Fair signal
	<input checked="" type="checkbox"/>	No sim card
	<input checked="" type="checkbox"/>	Sim card error/No service
WiFi	<input checked="" type="checkbox"/>	WiFi on but not connected any WiFi network
	<input checked="" type="checkbox"/>	WiFi ON and connected
	<input type="checkbox"/>	WiFi off

4

Setup your Device

Battery Operation

The device battery is polymer type battery, which should only be charged by using original Urovo power supply. Metal contact is unavailable or artificial short circuit electrode. Do not store battery in hot, humid, or corrosive environment. Do not break or crack battery. Do not store battery when it is fully charged completely drained. If device is not used for long period of time, remove the battery from the device, please. If the battery is misshapen or is found leaking, replace the battery immediately. Note: The battery should be charged for at least 8 hours before the first use.



Installing a Micro SIM/MicroSD Card

- Only use a micro SIM card
1. Swing open the main battery cover clip by 90 degrees, you can then remove the battery cover.
 2. Slide the Micro-SIM Card into the corresponding slots with contacts facing down.
 3. Press and pull the card to remove.



Note:
Overexertion should be avoided when installing or removing the card.

Battery Installation

Insert battery in the direction as shown in the picture on the right. Sit the battery tightly in the corresponding position.

6

Charging by USB Data Communication Cradle Place the device in the USB Data Communication Cradle which comes in the box



When starts to charge battery, the P indication LED of dock will be green. The red C indication LED will turn green after battery is fully charged.

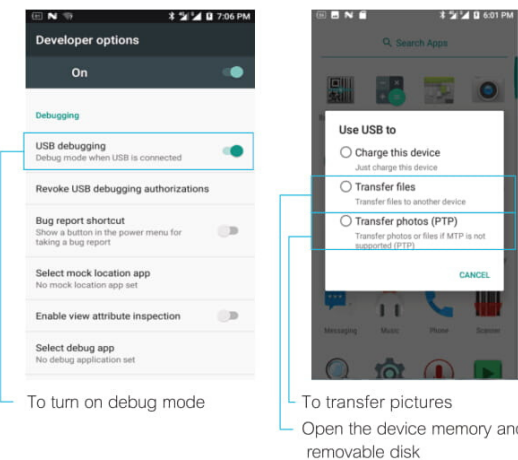
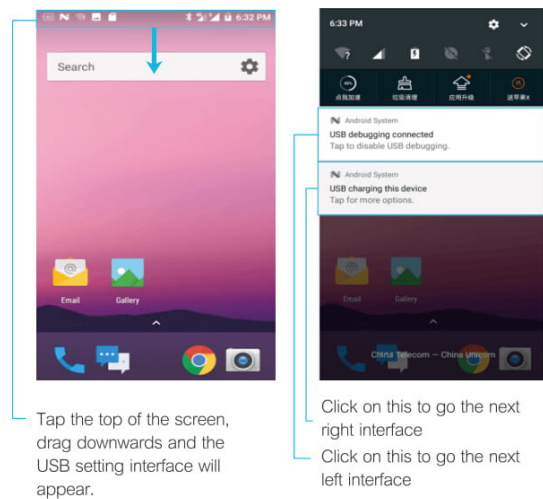
Connect the power cable into the cradle.
P: LED indicates the cradle is operational. Slot the device into the cradle and take note of the LED change on the device which indicate the charging process. Slot the battery into the cradle as shown in the picture. C: LED should lit up to indicate charging.

Note:
This cradle is an optional accessory.

Connecting to PC

After you install the Android driver or an Android smart phone assistant, you can connect the devices to your PC with USB cable provided. (You can download the software mentioned above from www.urovo.com/en. After device connected to your PC, the screen would display like this:

7



8

Device Care & Maintenance

Read all information before using the device to ensure safe and proper operation. Following are the warning information provided below to prevent incidents such as fire or explosion.

Warning

- Using unapproved power source, charger or battery may cause fire, explosion or other risks.
- Please use the accessories approved by manufacturer and corresponding to this model.
- Please charge device by standard charger of the manufacturer. Using other chargers may cause electrical leakage, fire, or damage to equipment and chargers.
- If charging is completed, remove the charger from the device and unplug the charger from the power outlet. Do not charge more than 12 hours.
- Do not expose to physical impact or damage.
- Do not use outdoor during a thunderstorm.
- Turn off the device before storage to prevent the battery to be completely drained.
- Do not expose to high temperatures, battery overheating may cause an explosion.
- Do not use the battery if the battery appears discoloration, deformation, abnormal heating, expansion and other phenomena.
- Stop using and disconnect all connections to other devices or cables before cleaning and maintaining the equipment.
- Do not touch the device with wet hands. Also, do not use the device in humid environments, such as rest rooms, or during water-base activities, such as swimming.
- It is recommended to use your device at temperature between 5 ~35°C (41~95°F).
- Do not store the device near or in heaters, microwave, cooking equipment, or high pressure containers.
- Keep the device dry.
- Do not use the device in the environment of potential explosion risk (including the gas station, below the deck of the ship, near the transportation or storage facilities of fuel or chemicals, and the area in the air containing chemicals or grains, metal powder and other particles).

9

Children

- 1) Do not allow children or pets to bite or suck the device.
- 2) Do not poke eyes, ears, or other body parts with the device or insert the device into the mouth.
- 3) If the device has a camera flash, do not use it close to the eyes of people or animals.

Transport Precautions

Do not transport the battery at ambient temperature higher than 65°C (149 °F). Please keep device and battery separately during storage. Pack battery with appropriate packing materials.

Liability Disclaimer

UROVO Technologies takes steps to ensure that its published Engineering specifications and manuals are correct, however, error do occur. UROVO Technologies reserves the right to correct any such errors and disclaim liability resulting therefrom.

Return & Recycle

This marking on the product accessories or literature indicates that the product and its electronic accessories (such as charger) should not be disposed with other household waste.

This product is ROHS compliant.

Help & Support

EMAIL US AT tech@urovo.com

CALL US ON +86-755-22673926

www.urovo.com/en

Floor 36, Hitech Zone Union Tower, No.63 Xuefu Road, Nanshan District, Shenzhen, China

UROVO TECHNOLOGY CO., LTD. reserves the right to change specifications and features without prior notice