

Ex-M OZC 3

Explosion Proof Camera
ATEX Zone 2 Certified

Key Benefits

- Suitable for ATEX Zone 2
- Connects with your smartphone
- Special hazardous area modes
- Ingress Protection: IP68
- Extremely Rugged and Lightweight
- Available in Red and Black ■ ■



GAS II 3G Ex ic IIC T6 Gc



Explosion/Shock Proof Camera

The ARMADEx Ex-M OZC 3 is a robust digital camera built for use in hazardous areas like oil rigs, gas facilities, and food processing plants. It's certified for **ATEX** Zones 2 (Gas, 3G) ensuring it meets the strict safety standards required in explosive environments.

The camera can handle drops from 2.1 meters, submersion in water (IP68), and cold temperatures down to -10°C without damage. In addition to that, the camera is crushproof up to 220lbf (100kgf), freeze-proof to -10°C, and features a time-lapse function for comprehensive monitoring. At only 249 grams, including its battery and optional SD Card, the OZC 3 is lightweight yet tough. The ATEX camera can take around 340 pictures on a full charge.

Its Wide Angle Optical Zoom Lens ensures clear and stable images at every zoom level, even up to a proximity of just 1 centimeter from an object, making it perfect for capturing detailed shots of small or intricate items like microchips. Moreover, it boasts an expanded 4x zoom function, offering even greater detail.

The OZC 3 performs exceptionally well in low light, thanks to its advanced imaging software and LED flash—important for areas where a strong flash is not allowed. New features like GPS for pinpointing location, sensors for checking temperature and elevation, and an anti-fog lens ensure the camera operates well in all conditions.



ARMADEx

Armadox is a tradename of
Armadox Explosion Protection B.V.

Tinstraat 33
2984 AN Ridderkerk
The Netherlands

+31 (0) 180-472880
www.armadex.com
info@armadex.com



Ex-M OZC 3



Explosion Proof Camera
ATEX Zone 2 Certified

Product Specifications

Feature	Description
IMAGE SENSOR	12 MP - 1/2.3" BSI CMOS
PROCESSOR	TruePic VIII
LENSES	25-100mm (35mm equiv.) - 4x Optical Zoom
	F2.0 (W) - F4.9 (T)
MACRO CAPABILITY	Super macro: less than f=5.4mm, from 0.1m to 0.3m / above 5.4mm, from 0.01m to 0.3m / Microscope: 0.01m - 0.30m
ONE PUSH TELE-CONVERTER	x2 (P, A, Movie mode), x2/x4 (Microscope mode)
IMAGE STABILIZATION	Sensor Shift Image Stabilization
MONITOR	3.0", approx. 1,037k dots (3:2)
ISO	100 - 12,800
SHUTTER SPEED	1/2 - 1/2000 sec. (A mode: up to 4 sec.)
STILL PHOTO RECORDING	JPEG, RAW(12-bit lossless compression), JPEG+RAW
	[RAW] 4000 × 3000
	[JPEG] 4000 × 3000 ~ 1280 × 960
SEQUENTIAL SHOOTING	[Sequential shooting H]*: approx. 20 fps with selectable 10/20 fps
	[Sequential shooting L]: approx. 5 fps
	[Pro Capture]*: approx. 10 fps *Electronic Shutter
INTERVAL SHOOTING	*Creating Time-lapse movie is possible with interval shooting up to 299 frames
	*Time priority, Frame priority selectable
	*Exposure smoothing is available



Armadox is a tradename of
Armadox Explosion Protection B.V.

Tinstraat 33
2984 AN Ridderkerk
The Netherlands

+31 (0) 180-472880
www.armadox.com
info@armadox.com



Ex-M OZC 3



Explosion Proof Camera
ATEX Zone 2 Certified

Product Specifications

Feature	Description
VIDEO	3840×2160 (4K) 30p, 25p / IPB (approx. 102Mbps)
	1920 × 1080 (FHD) / 60p, 50p, 30p, 25p / IPB (approx. 52Mbps, approx. 30Mbps, approx. 18Mbps)
	1280 × 720 (HD) / 30p, 25p / IPB (approx. 26Mbps, approx. 14Mbps, approx. 10Mbps) *Frame rates may drop when particular Art Filters and Movie Effects are used.
TOUGH CAPABILITIES	Waterproof to depths of 50 ft / 15 m - IPX8
	Dustproof - IP6X
	Freezeproof to 14°F / -10°C
	Crushproof to 220 lbf / 100 kgf
	Shockproof from 7 ft / 2.1 m
	Anti-fog dual pane lens cover glass
GPS / FIELD SENSOR SYSTEM	GPS (GLONASS, Galileo, QZSS), compass, manometer, temperature sensor, acceleration sensor
CREATIVE FEATURES	Live Composite, Art Filters, HDR, Underwater Modes, Macro Modes, Construction Mode
CONNECTIVITY	USB Type-C
	Micro HDMI (type D)
	Built-in Wi-Fi (IEEE 802.11b/g/n)
	Built-in Bluetooth (Version 4.2 Bluetooth Low Energy)
POWER	LI-92B Li-ion battery
DIMENSIONS	113.9 mm (W) x 65.8 mm (H) x 32.7 mm (D)
	4.48 in (W) x 2.59 in (H) x 1.28 in (D)
WEIGHT	Approx. 249 g (with battery and memory card, based on CIPA standards) (0.55 lb / 8.78 oz)



Armadox is a tradename of
Armadox Explosion Protection B.V.

Tinstraat 33
2984 AN Ridderkerk
The Netherlands

+31 (0) 180-472880
www.armadox.com
info@armadox.com



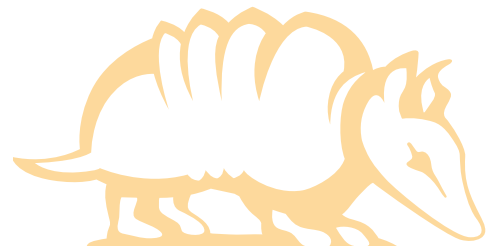
Ex-M OZC 3



Explosion Proof Camera
ATEX Zone 2 Certified

Box Contents

The Armadex OZC-3 comes in a specially designed suitcase containing:
ATEX Camera, USB cable (Type A to C), Hand strap, instructions manual,
warranty, LI-92B Lithium-ion battery.



Armadex is a tradename of
Armadex Explosion Protection B.V.

Tinstraat 33
2984 AN Ridderkerk
The Netherlands

+31 (0) 180-472880
www.armadex.com
info@armadex.com



Ex-M OZC 3



Explosion Proof Camera
ATEX Zone 2 Certified

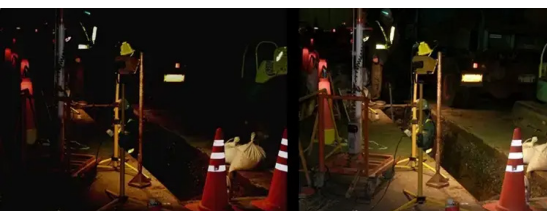
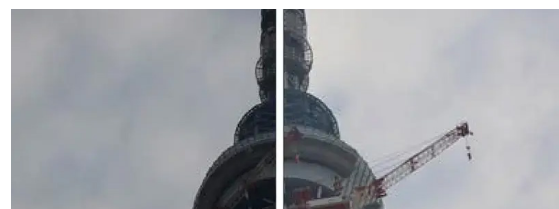
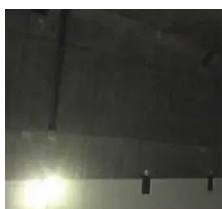
Optimized Solutions for Hazardous Area Operations

The OZC 3 is equipped with features and modes tailored for hazardous environments:

Data and Timestamp: Simplifies record-keeping with easy logging.

CALS Standards: Adheres to rigorous image standards for defense and engineering applications.

Construction Mode: Enhances image quality in challenging conditions by:
Removing dust particles from images.
Automatically adjusting brightness in dark areas for clarity.
Adapting to outdoor lighting, such as minimizing shadows in direct sunlight.



Slow Shutter: Allows long exposure times to capture detailed images in low-light settings.

Document Mode: Ensures legible captures of labels, facilitating digital reporting and analysis.



Armadex is a tradename of
Armadex Explosion Protection B.V.

Tinstraat 33
2984 AN Ridderkerk
The Netherlands

+31 (0) 180-472880
www.armadex.com
info@armadex.com



Ex-M OZC 3

Explosion Proof Camera
ATEX Zone 2 Certified

Panorama: Offers comprehensive views of hazardous zones.



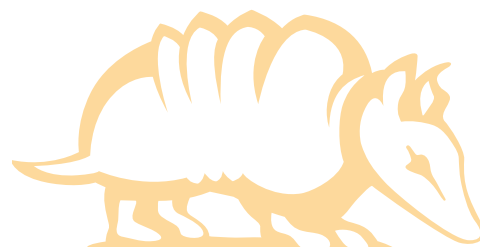
Macro Mode: Provides extreme close-up detail from just 1 cm away, ideal for examining cracks and damage.

Environmental Logging: Records location, ambient temperature, and pressure readings with a manometer.

Oi.share: Enables seamless connection to a hazardous area smartphone for immediate image viewing and transfer.



Zapraszamy do kontaktu!
Więcej informacji: www.kreski.pl



Armadex is a tradename of
Armadex Explosion Protection B.V.

Tinstraat 33
2984 AN Ridderkerk
The Netherlands

+31 (0) 180-472880
www.armadex.com
info@armadex.com

