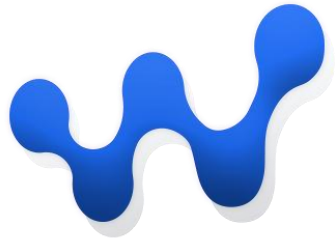




MEFERI TECHNOLOGIES CO., LTD  
MDM/EMM Presentation



# SHADOWWALK

Mobile Device Management

# Tracking Device Management Challenges

Our mission is to turn challenges into opportunities for enhanced performance.

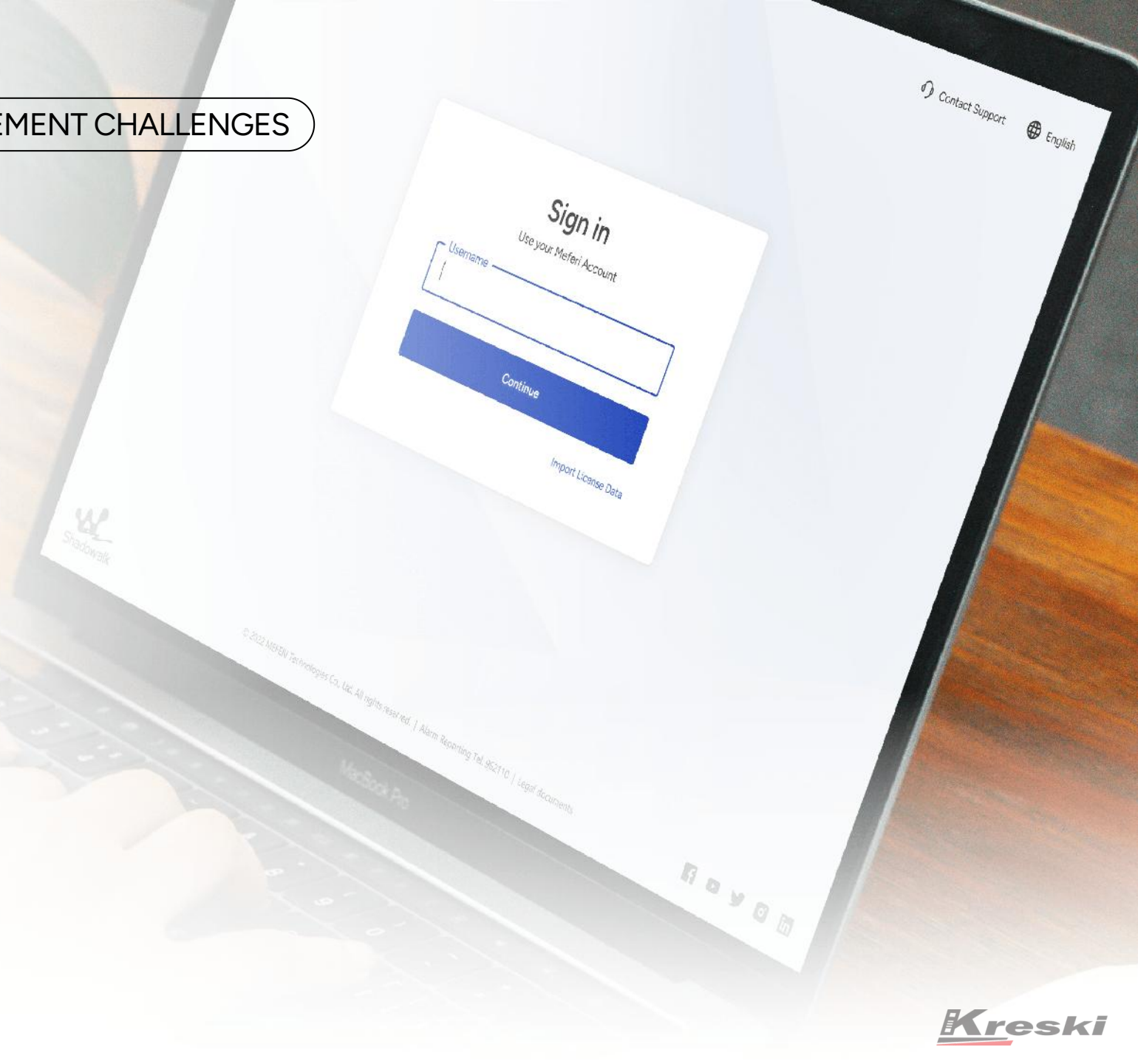
With MDM/EMM Shadowwalk, we prioritize the safety and effectiveness of your equipment, ensuring seamless operations and maximum productivity for your business.



# What Is MDM/EMM?

## Enterprise Mobile Device Management System

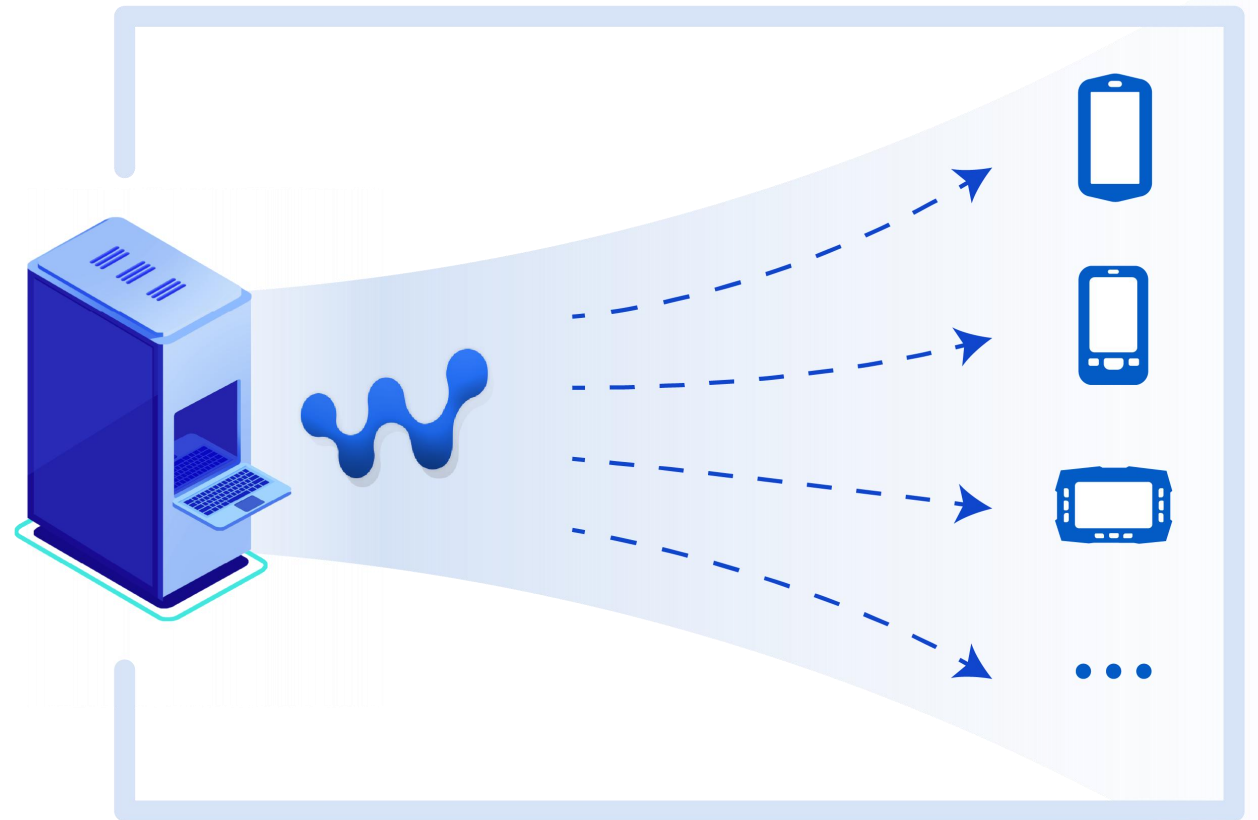
- Remote control center for corporate mobile devices
- System for managing, administering, diagnostic and analytic
- It is an integral part of the IT infrastructure of corporations and large companies.



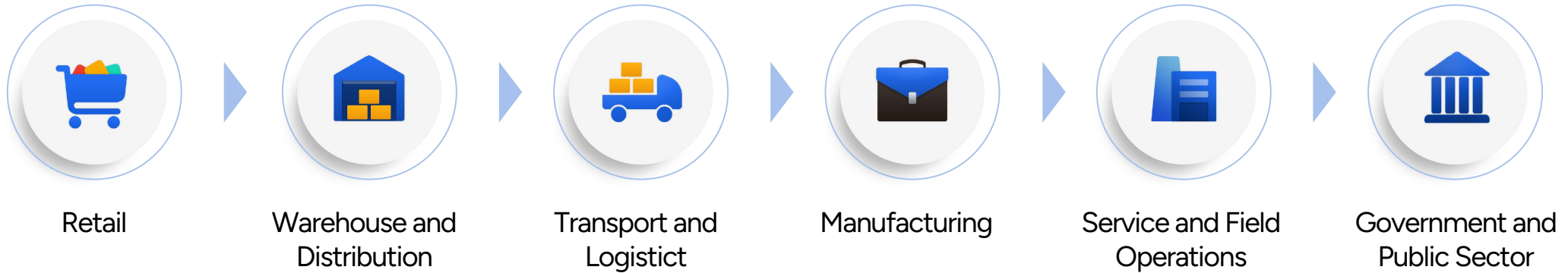
# For What?

- CONVENIENCE
- DATA COLLECTION
- PROTECTION
- RELIABILITY
- SPEED
- SERVICE
- DEVELOPMENT
- INNOVATIONS

The Shadowwalk is designed for remote management of any number of mobile devices, as well as for control and security of Enterprise equipment.



# Industries



In a large business, there is a pool of MEFER devices used to solve various business tasks.

# Industries



Remote Device Management

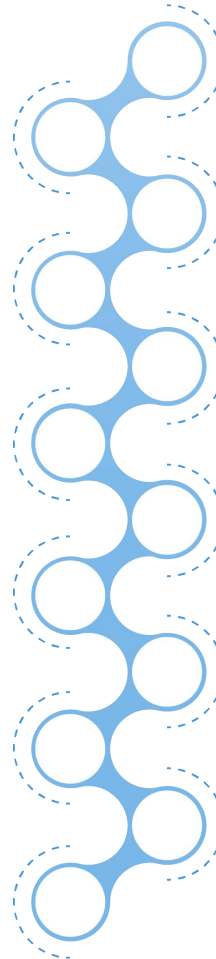
Apps Management (Google Play Integrated)

Advanced Security Management

Remote Support Service

GEO restrictions

OEM CONFIG



System Management

Remote Device Diagnostics

Kiosk Enterprise Mode

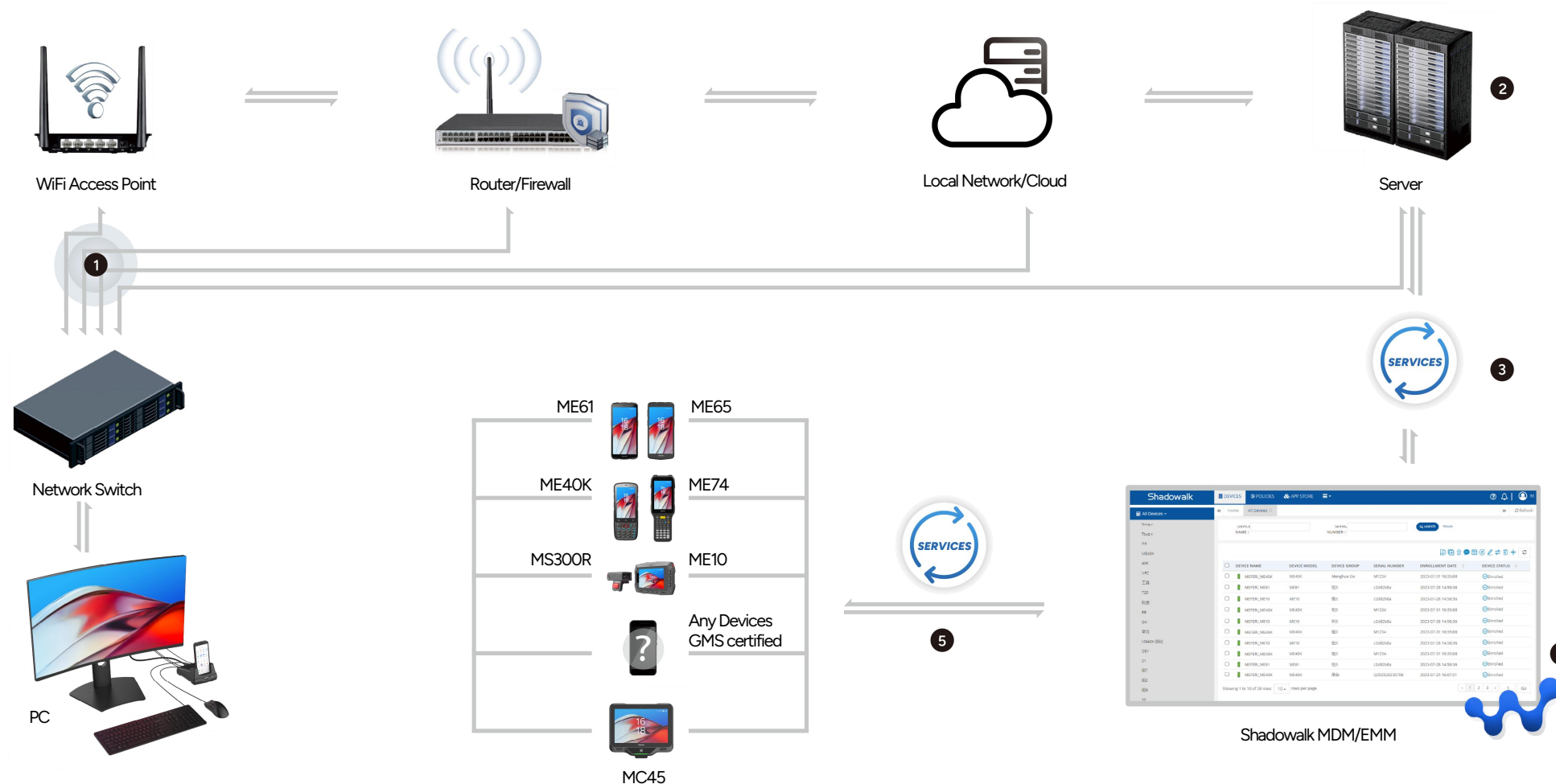
Expanded Flexible Policies

Visual Dashboard

Hybrid Activation of Licenses

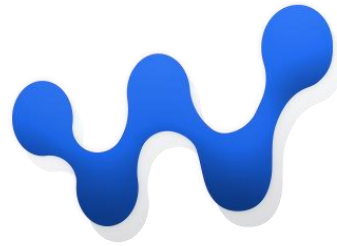


# Isometric Diagram of MDM/EMM Shadowwalk Solution



# Broad Android Compatibility in Shadowwalk

Android 9, 10, 11, 12, 13



android 

Stay ahead of the curve with Shadowwalk's extensive support for multiple Android versions. From Android 9 to the latest Android 13, our MDM/EMM solution ensures optimal performance and seamless integration across all your Android devices.



# Comprehensive Device Support with Shadowwalk

## Supported Devices:

any Android devices certified by GMS such as Mobile Computers, Wearable Computers, Tablets, Mounted Computers, Smartphones etc.

Shadowwalk breaks boundaries with its wide-ranging device support. From mobile and wearable computers to tablets and mounted computers, Shadowwalk's MDM/EMM solution ensures seamless integration and management across diverse hardware platform.



# Efficient App Control with Shadowwalk



Shadowwalk's centralized app management revolutionizes device control. With features like an integrated App Store for system-wide app deployment, comprehensive device management for real-time app monitoring, and flexible app policies for tailored usage rules and restrictions, experience control like never before.

# Powerful Control

Centralized management of device applications in MDM/EMM Shadowwalk provide powerful control and management functions for users:



App Store - to install, remove, edit and monitor all apps in system



Apps Policies - to set versatile policies for all applications in the system.



Device management - to monitor all apps installed on all devices in the system



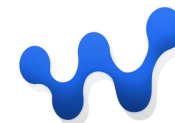
The ability to set flexible usage rules and restrictions for any application in the system.

# Google Play integrated

## Leverage the Full Potential of Google Play with Shadowwalk

Experience seamless app management in enterprise mobility with Shadowwalk's established integration with Google Play. Assuring tailored app access for end users while empowering IT administrators with robust control and flexibility.

Right apps get to the right employees at the right time.



Google Play

# Google Play integrated

Convenient and customizable access to Google Play apps:

## For it admins:

IT admins can use managed Play to browse Android apps for their enterprise.

## For end users:

To end users, managed Google Play is their enterprise app store. The user experience is similar to Google Play - users can browse apps, view their details, and install them. The most notable difference is that the user's IT admin controls the apps that a user can access and install from managed Google Play.

# Leverage OEM Config For Customized Device Management

Your Key to Tailored Policies and Robust Control



Shadowwalk MDM/EMM fully integrates with OEM Config, a standard that unifies device manufacturers and enterprise mobility management. Access custom, OEM-specific management policies for any managed Android 9.0+ device through your MDM/EMM console. Experience granular control and flexibility, revolutionizing how you manage your mobile device portfolio.



# Three Ways To Quickly Enroll Your Android Devices

Swift, Secure, and Scalable Onboarding  
with Shadowwalk MDM/EMM

Onboard your Android devices seamlessly using three efficient methods:

- **Enrollment through Excel:**

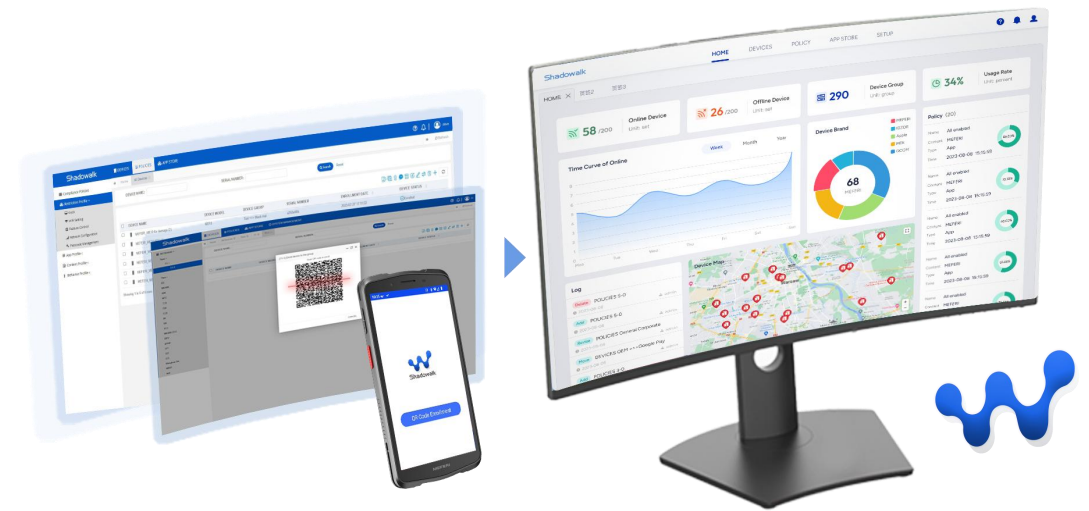
Bulk register devices effortlessly via an Excel file containing device serial numbers.  
Ideal for large-scale deployments.

- **Barcode Scanning Enrollment:**

Utilize barcodes generated within the MDM/EMM platform for quick and accurate device addition. A scan is all it takes.

- **Device First-Start Enrollment:**

Instantly enroll devices upon their first start-up, simplifying device management from the get-go





Zapraszamy do kontaktu!  
Więcej informacji: [www.kreski.pl](http://www.kreski.pl)