

PROGLOVE

Kreski

Zapraszamy do kontaktu!
Więcej informacji: www.kreski.pl

ENTER THE ERA OF

Wearable Intelligence

Your Wearable Companion with
Advanced Analytics for **Safer,**
Healthier, and Optimized
Operations

ACHIEVE OPTIMAL PICK & STOW
PROCESSES WITH MAXIMUM
VISIBILITY AND PROCESS CONTROL

Empowering success with customer-centric solutions.
The ProGlove solution combines MAI's real-time worker
guidance and Warehouse 360's analytics to
optimize fulfillment, enhance efficiency, and improve
safety-seamlessly integrating with existing WMS
and enterprise systems



Get in touch today and discover your **Personalized ROI**
Reach out to info@proglove.com



MAI

MAI is a wearable companion for hyper-efficient process documentation, worker guidance, and communication, giving frontline operators full control over their workflow and providing warehouse managers with actionable process insights.

EMPOWER WORKERS

WEARABLE COMPANION

SEAMLESS INTEGRATION

SHOPFLOOR EFFICIENCY

Full process control on the back of hand with intuitive touch interaction, real-time guidance, and multi range scan engine.

The lightest, smallest device of its kind designed for industrial use, ensuring maximum mobility and durability.

Versatile Android, iOS, Gateway, and Wi-Fi compatibility enable smooth adoption without disrupting existing systems.

Advanced digital insights and seamless Warehouse 360 integration optimize workflows and improve communication.



Kreski
Zapraszamy do kontaktu!
Więcej informacji: www.kreski.pl

Warehouse 360

Warehouse 360 is an optimization solution that visualizes logistics workflows in real-time to enhance productivity, reduce errors, and improve space utilization.

WAREHOUSE KPIs

LAYOUT VISIBILITY

WORKLOAD VISIBILITY

WORKFLOW VISIBILITY

Gain insights into cost structure and ergonomics with reliable KPIs, blending data from the WMS and ProGlove scanners.

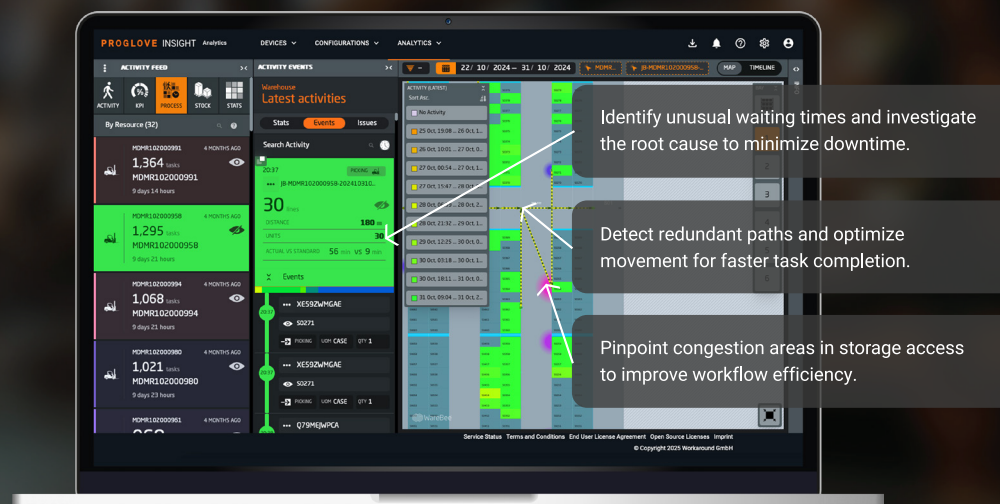
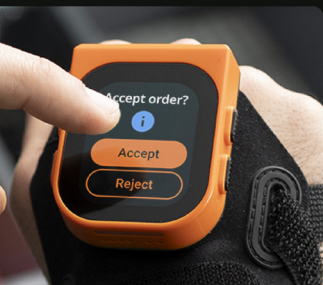
Optimize the use of space and item placement to improve ergonomics and reduce costs due to layout inefficiencies.

Understand optimal workload allocation and improve scheduling decisions with real-time fluctuation alerts.

Identify outliers, detect congestions, check for workflow compliance and get visibility into optimal walking paths.

- Gain 5% overall pick & stow productivity through workflow optimization and reduction in process breaks.
- Unlock the full potential of your existing warehouse resources.
- Eliminate manual reports
- Measure productivity independently of the WMS, based on scanner data.

- Productivity Boost: Increases productivity in sorting, picking, packing, and inventory tasks by up to 50%, with even higher gains in operations needing flexible worker allocation.
- Error Reduction and Quality Assurance: Reduces errors by 29% with intuitive step-by-step guidance and instant outlier handling on a 1.96-inch full-color touch display.
- Worker Guidance and Assistance: Enables real-time task interaction supported by audio, vibration, and LED feedback, ensuring hands-free, efficient operations.



Identify unusual waiting times and investigate the root cause to minimize downtime.

Detect redundant paths and optimize movement for faster task completion.

Pinpoint congestion areas in storage access to improve workflow efficiency.

Does not require major IT projects or changes to the WMS.