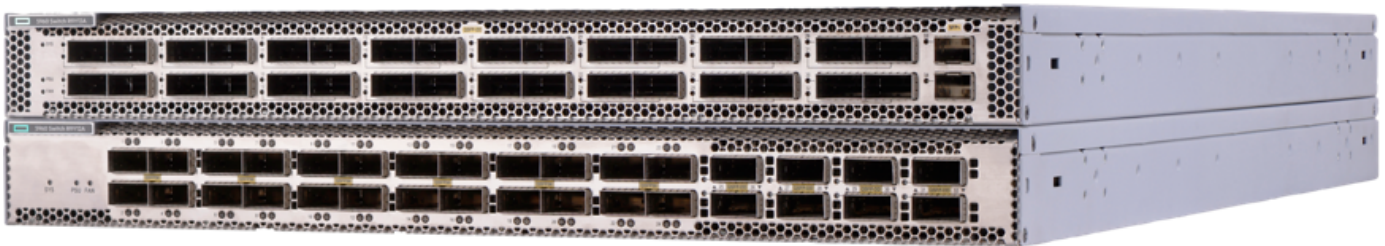


# HPE Networking Comware Switch Series 5960



## What's new

- High-performance, high-density, and backward-compatible switch with varied 400/200/100G connectivity options.
- OS Comware v9 offers enhanced software features such as Segment Routing MPLS, SR-V6, PTP/SyncE, egress ACL, egress rate limiting, and others for highly distributed environments.
- Dual, redundant, hot-swappable power supplies maintain a dynamic and highly available network.
- Supports HPE IMC for a consistent network manageability experience while integrating with HPE IMC Orchestrator and Analyzer for data center fabric orchestration, monitoring, and application telemetry.

## Overview

The HPE Networking Comware Switch Series 5960 is a high-performance, high-density top-of-rack (ToR) switch designed for enterprise data centers, cloud service providers, and telco environments. With multiple connectivity options including 400G and 100G QSFP28 ports, these switches offer exceptional performance and improved power savings. VXLAN/EVPN and DRNI improve scalability and resiliency, while modern software features enable a dynamic and highly available network. HPE Intelligent Management Center (IMC) support provides centralized configuration, compliance, policy management, monitoring, and troubleshooting. HPE IMC Orchestrator and Analyzer are also supported for data center fabric orchestration and application telemetry.

## Features

### Consistent and Advanced Data Center Switches with Flexible Connectivity Options

The HPE Networking Comware Switch Series 5960 offers 25/40/100/200/400G connectivity with three SKUs

- a) High-density 32x400G QSFP-DD switch
- b) Highly flexible 24x100/200G + 4x400G QSFP-DD switch backward compatible with widely used 100G QSFP28 ports
- c) High-density 48x100G 6QSFP-DD switch

The switch series supports new-generation OS Comware v9 offering enhanced features such as SR-MPLS, SR-V6, and others for highly distributed environments built on a modular and open architecture; supports containerized deployment; can run third-party software applications.

It has VXLAN/EVPN for network virtualization and overlay solutions for improved flexibility.

The switch series supports DRNI that combines multiple physical switches into one virtual distributed-relay (DR) system for doubling aggregate bandwidth, fast forwarding, resiliency, and high availability.

The 5960R model supports PTP, SR, VXLAN, EVPN. DRNI, HPE IMC Orchestrator

### **High-Performance Data Center Switching**

The HPE Networking Comware Switch Series 5960 supports redundant, hot-swappable power modules and varied fan speeds to meet the actual demands, thereby enabling a dynamic and highly available network.

Delivers up to 12.8 Tbps switching capacity for demanding data center applications.

Low latency, under 1 s delivering increased network throughput.

Uses programmable chips that improve flexibility and aid in network expansion by defining forwarding logic and developing new features as per user needs through simple software upgrades.

### **Rich Quality of Service (QoS) features**

The HPE Networking Comware Switch Series 5960 support Layer 2 to Layer 4 packet filtering for traffic classification based on source MAC address, destination MAC address, source IP address, destination IP address, TCP/UDP port number, protocol type, and VLAN.

The switch series Supports committed access rate (CAR) and line rate for anomaly detection and troubleshooting.

It provides extensive traffic prioritization with strict priority (SP) queuing, weighted round robin (WRR), SP+WRR, WFQ, and SP+WFQ.

### **Improved Visibility and Simplified Management**

The HPE Networking Comware Switch Series 5960 supports operations, administration, and maintenance (OAM) for improved manageability.

The switch series increase network visibility by sending real-time information, statistics, and RDMA notifications to the data center operation and maintenance platform through ERSPAN and gRPC protocols.

It support real-time analysis, troubleshooting, and risk warning to improve network performance and provide business continuity.

The switch series uses multiple access methods including SNMPv1/v2c/v3, Telnet, SSH 2.0, SSL, and FTP to monitor essential network functions; and supports events, alarm, history, and statistics group plus a private alarm extension group.

It supports centralized configuration, compliance and policy management, monitoring, and troubleshooting with HPE IMC to provide a consistent network manageability experience; for data center fabric orchestration and application telemetry, this switch supports HPE IMC Orchestrator and Analyzer.

Technical specifications		HPE Networking Comware Switch Series 5960
Ports	32x400G port OR 24x100G/200G+ 8x400GQDD depending on the model	
Memory and processor	D-1627 @2.9 GHz,16G DDR4, 240G SSD	
Latency	<1.2μs	
Switching capacity	12.8 Tbps	
Management features	HPE IMC CLI out-of-band management SNMP Manager Telnet and FTP. Notes: The customer must install a minimum of one power supply, as the device does not come with one. The customer must install six fan kits, as the device does not come with one.	
Input voltage	DC Input Voltage 180V to 320V; AC Input Voltage 100V to 240V	
Operating temperature	0°C to 40°C (32°F to 104°F)	
Power consumption	830W	
Heat dissipation	4382.65 BTU/h max.	

## HPE Services

No matter where you are in your transformation journey, you can count on HPE Services to deliver the expertise you need when, where and how you need it. From strategy and planning to deployment, ongoing operations and beyond, our experts can help you realize your digital ambitions.

### [Advisory & Professional services](#)

Experts can help you map out your path to hybrid cloud and optimize your operations.

### [Managed services](#)

HPE runs your IT operations, giving you unified control, so can focus on innovation.

### [Support services](#)

Optimize your entire IT environment and drive innovation. Manage day-to-day IT operational tasks while freeing up valuable time and resources.

- **HPE Complete Care Service:** a modular service designed to help optimize your entire IT environment and achieve agreed upon IT outcomes and business goals. All delivered by an assigned team of HPE experts.
- **HPE Tech Care Service:** the operational service experience for HPE products. The service provides access to product specific experts, an AI driven digital experience, and general technical guidance to help reduce risk and search for ways to do things better.
- **HPE Multivendor Services:** Single point of accountability for managing on-site hardware and software support for multivendor products. HPE experts help manage your IT across technologies and platforms for HPE and non-HPE technologies, acting as the single point of contact for your IT operational needs.

### [Lifecycle Services](#)

Address your specific IT deployment project needs with tailored project management and deployment services.

### [HPE Education Services](#)

Training and certification designed for IT and business professionals across all industries. Create learning paths to expand proficiency in a specific subject. Schedule training in a way that works best for your business with flexible continuous learning options

**Defective Media Retention** is optional and allows you to retain Disk or eligible SSD/Flash Drives replaced by HPE due to malfunction.

### **HPE GreenLake**

[HPE GreenLake edge-to-cloud platform](#) is HPE's market-leading as-a-Service offering that brings the cloud experience to apps and data everywhere – data centers, multi-clouds, and edges – with one unified operating model, on premises, fully managed in a pay per use model.

If you are looking for more services, like **IT financing solutions**, please [explore them here](#).

For additional technical information,  
available models and options, please  
reference the QuickSpecs

Visit [HPE.com](https://www.hpe.com)

Chat now

© Copyright 2025 Hewlett Packard Enterprise Development LP. The information contained herein is subject to change without notice. The only warranties for Hewlett Packard Enterprise products and services are set forth in the express warranty statements accompanying such products and services. Nothing herein should be construed as constituting an additional warranty. Hewlett Packard Enterprise shall not be liable for technical or editorial errors or omissions contained herein.

Parts and Materials: HPE will provide HPE-supported replacement parts and materials required to maintain the covered hardware.

Parts and components that have reached their maximum supported lifetime and/or the maximum usage limitations as set forth in the manufacturer's operating manual, product quick-specs, or the technical product data sheet will not be provided, repaired, or replaced as part of these services.

Image may differ from the actual product.

[PSN1014745762WWEN](#), September 29, 2025.

HEWLETT PACKARD ENTERPRISE

[hpe.com](https://www.hpe.com)



Zapraszamy do kontaktu!  
Więcej informacji: [www.kreski.pl](https://www.kreski.pl)

