

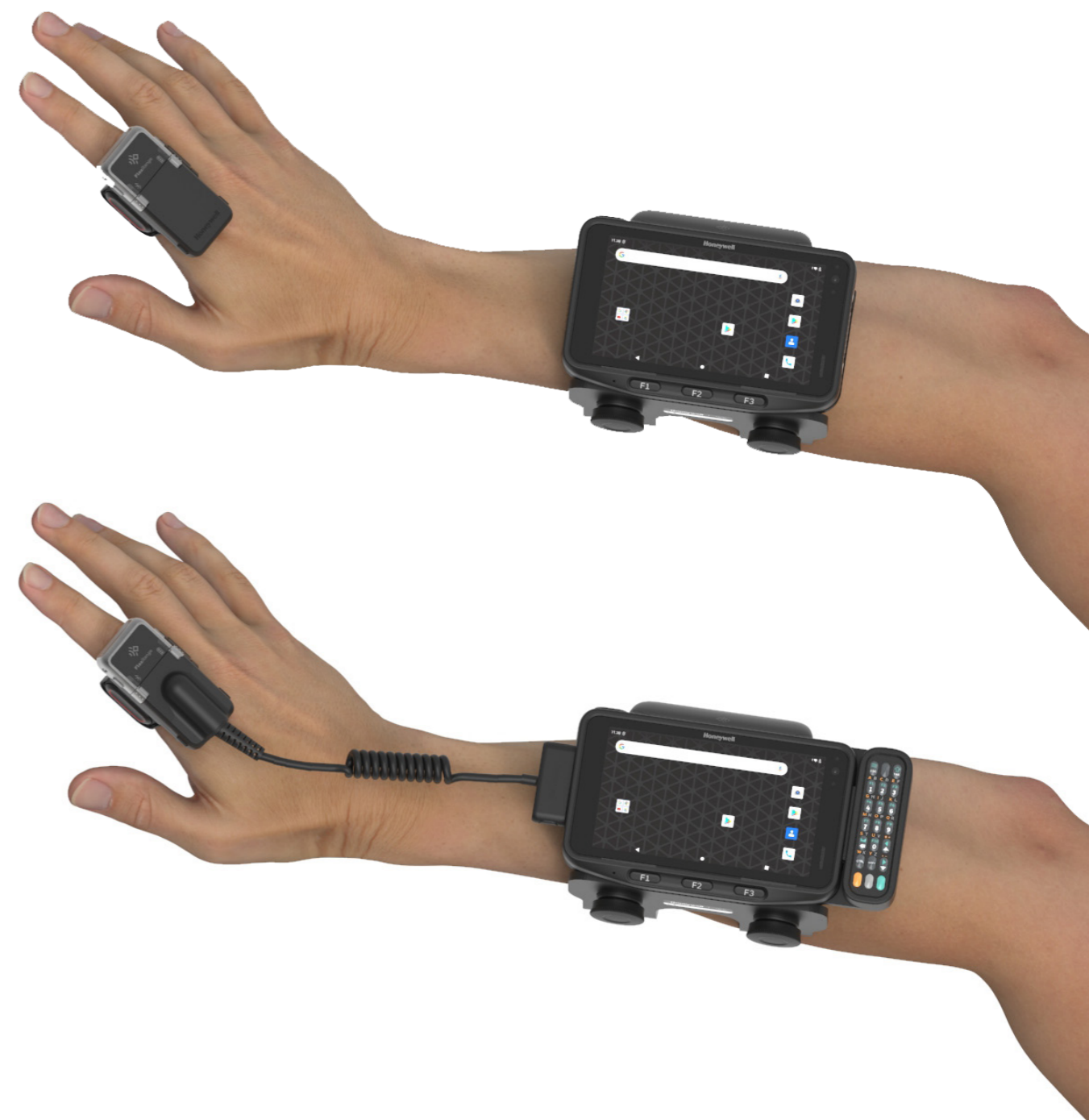
CW45

WEARABLE RUGGED MOBILE COMPUTER

Configuration Guide



CW45



Kreski

Zapraszamy do kontaktu!
Więcej informacji: www.kreski.pl

THE
FUTURE
IS
WHAT
WE
MAKE IT

Honeywell

TABLE OF CONTENTS

- 1 **TABLE OF CONTENTS**
- 2 **CW45 FEATURE OVERVIEW**
 - STANDARD BATTERY
 - EXTENDED BATTERY
- 4 **CW45 WEARABLE OPTIONS**
 - ARM CONFIGURATIONS - LEFT ARM VERSUS RIGHT ARM
- 5 **CW45 CONFIGURATION MAP**
 - ANDROID
- 6 **HONEYWELL EDGE SERVICES**
 - GOLD REPAIR SERVICES - 3 YEAR
 - PLATINUM REPAIR SERVICES - 3 YEAR
 - GOLD REPAIR SERVICES - 5 YEAR
 - PLATINUM REPAIR SERVICES - 5 YEAR
 - CW45 - REPAIR SERVICES COVERAGE
- 9 **CW45 SOFTWARE**
 - DEVICE CLIENT PACK
- 10 **CW45 SCANNING**
 - OPTION 1 - 8675I TETHERED RING SCANNER
 - OPTION 2 - 8675I BLUETOOTH RING SCANNER
- 12 **CW45 DESKTOP COMMUNICATIONS**
 - OPTION 1 – PORTABLE
 - OPTION 2 – FIXED WITH UNIVERSAL CUP
- 13 **CW45 CHARGING AND COMMUNICATION**
 - OPTION 1 - QUAD CHARGER WITH UNIVERSAL CUP
 - OPTION 2 - 5-BAY CHARGER WITH BATTERY CUP
 - OPTION 3 - 5-BAY CHARGER WITH 8675I QUAD SCANNER CUP
 - OPTION 4 - QUAD BATTERY CHARGER
 - UNIVERSAL CUPS
- 16 **CW45 CHARGING AND COMMUNICATION**
 - RACK / WALL MOUNT BRACKET

- 17 **CW45 BATTERY**
 - SPARE BATTERY OPTIONS
- 18 **CW45 MOUNTING**
 - WEARABLE ARM STRAP
- 19 **MISCELLANEOUS**
 - OPTIONAL PARTS
 - AC CORDS



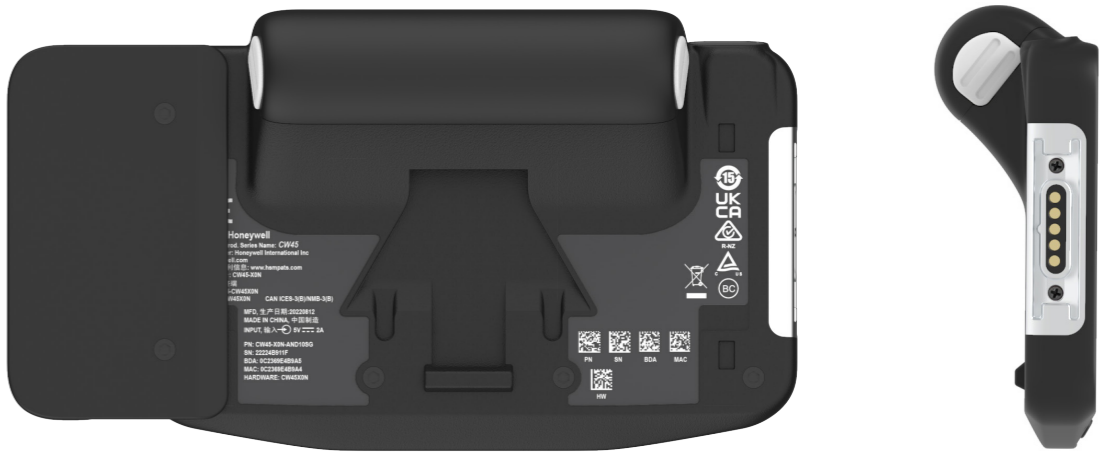
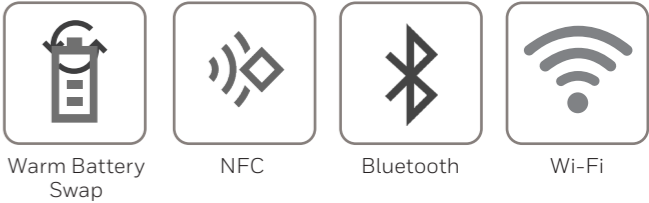
CW45 FEATURE OVERVIEW

Standard Battery

Included in the box:

- CW45 Mobile Computer
- Battery (CW45-BAT-S)
- Arm Mount (CW45-MOUNT)
- Comfort Pad (CW45-CPAD)

(Arm strap not included, must be ordered separately)



CW45 Android – Wi-Fi Only – 6GB RAM/ 64GB Flash

CW45-X0N-AND10SG

CW45, Wearable, WLAN, 4.7 inch Display 720x1280, Wi-Fi 6 802.11 a/b/g/n/ac/r/k/mc/ax, 2x2 MIMO, BT5.1 BLE, 6GB RAM/64GB Flash, 13MP Side Camera / 8MP Front Camera, Device Client Pack (DCP) Pre-Loaded (1 Year DCP Term License), Android GMS, 3,400mAh Standard Battery, Warm Swap, IP67 & 65, Arm strap and Charger required and sold separately, Global

CW45 Android – Wi-Fi Only – 6GB RAM/ 64GB Flash - Keypad

CW45-X0N-BND10SG

CW45, Wearable, WLAN, 4.7 inch Display 720x1280, Wi-Fi 6 802.11 a/b/g/n/ac/r/k/mc/ax, 2x2 MIMO, BT5.1 BLE, 6GB RAM/64GB Flash, 21-Key Keypad, 13MP Side Camera / 8MP Front Camera, Device Client Pack (DCP) Pre-Loaded (1 Year DCP Term License), Android GMS, 3,400mAh Standard Battery, Warm Swap, IP67 & 65, Arm strap and Charger required and sold separately, Global

Honeywell Repair Services

SVCCW45-SG3N	CW45 Edge Service, Gold Maintenance Contract, 3 Year, New Contract
ADD SVCREPLACE-MOB3	AddOn, Edge Service, Device Replacement, Mobility, 3 Year

CW45 FEATURE OVERVIEW

Extended Battery

- Included in the box:
- CW45 Mobile Computer
 - Battery (CW45-BAT-EX)
 - Arm Mount (CW45-MOUNT)
 - Comfort Pad (CW45-CPAD)

(Arm strap not included, must be ordered separately)



Extended Battery



Arm Mount



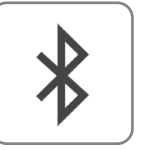
Comfort Pad



Warm Battery Swap



NFC



Bluetooth



Wi-Fi



CW45 Android - Wi-Fi Only - 6GB RAM/ 64GB Flash

CW45-XON-AND10XG

CW45, Wearable, WLAN, 4.7 inch Display 720x1280, Wi-Fi 6 802.11 a/b/g/n/ac/r/k/mc/ax, 2x2 MIMO, BT5.1 BLE, 6GB RAM/64GB Flash, 13MP Side Camera / 8MP Front Camera, Device Client Pack (DCP) Pre-Loaded (1 Year DCP Term License), Android GMS, 6,800mAh Extended Battery, Warm Swap, IP67 & 65, Arm strap and Charger required and sold separately, Global

CW45 Android - Wi-Fi Only - 6GB RAM/ 64GB Flash - Keypad

CW45-XON-BND10XG

CW45, Wearable, WLAN, 4.7 inch Display 720x1280, Wi-Fi 6 802.11 a/b/g/n/ac/r/k/mc/ax, 2x2 MIMO, BT5.1 BLE, 6GB RAM/64GB Flash, 21-Key Keypad, 13MP Side Camera / 8MP Front Camera, Device Client Pack (DCP) Pre-Loaded (1 Year DCP Term License), Android GMS, 6,800mAh Extended Battery, Warm Swap, IP67 & 65, Arm strap and Charger required and sold separately, Global

Honeywell Repair Services

SVCCW45-SG3N

CW45 Edge Service, Gold Maintenance Contract, 3 Year, New Contract

ADD SVCREPLACE-MOB3

AddOn, Edge Service, Device Replacement, Mobility, 3 Year

CW45 WEARABLE OPTIONS

Arm Configurations - Left Arm versus Right Arm

Left Arm



Left Arm - Option 1

- CW45 Wearable Computer
- 8675i Bluetooth (Optional)
8675i can be worn on the left or right hand



Left Arm - Option 2

- CW45 Wearable Computer
- Keypad (Optional)
- 8675i Bluetooth (Optional)
8675i can be worn on the left or right hand



Left Arm - Option 3

- CW45 Wearable Computer
- CW45 cabled connector to 8675i (Optional)
Requires tethered connection on the same arm to CW45
- 8675i scanner (Optional)

Kreski

Zapraszamy do kontaktu!
Więcej informacji: www.kreski.pl

Right Arm



Right Arm - Option 1

- CW45 Wearable Computer
- 8675i Bluetooth (Optional)
8675i can be worn on the left or right hand



Right Arm - Option 2

- CW45 Wearable Computer
- Keypad (Optional)
- 8675i Bluetooth (Optional)
8675i can be worn on the left or right hand



Right Arm - Option 3

- CW45 Wearable Computer
- CW45 cabled connector to 8675i (Optional)
Requires tethered connection on the same arm to CW45
- 8675i scanner (Optional)



Right Arm - Option 4

- CW45 Wearable Computer
- Keypad (Optional)
- CW45 cabled connector to 8675i (Optional)
Requires tethered connection on the same arm to CW45
- 8675i scanner (Optional)

CW45 CONFIGURATION MAP

Android

												DESCRIPTION	NOTES
BLUETOOTH/ WI-FI	WWAN	NFC		MEMORY	IMAGER	CAMERA	OPERATING SYSTEM	SOFTWARE	BATTERY	DOMAIN			
CW45-													
X												Wi-Fi 6 802.11 a/b/g/n/ac/ax + Bluetooth 5.1 2x2 MIMO	IEEE 802.11 a/b/g/n/ac/ax/d/e/h/i/k/r/w/mc ; Wi-Fi certified V5.1 Bluetooth and BLE Supported Bluetooth Profiles: HFP, PBAP, A2DP, AVRCP, OPP, SPP, GATT
	0											No WWAN	
		N										Near Field Communications (NFC)	Integrated NFC reader, compliant with ISO/IEC 14443 A, ISO/IEC 14443 B, ISO/IEC 15693 (iCode), MIFARE 1K / 4K, MIFARE DESFire, Sony FeliCa, ISO/IEC 18092 (Type F)
			--										
				A								6GB RAM, 64GB Flash Memory	Qualcomm QCS4290/ QCM4290 octa-core 2.0GHz
				B								6GB RAM, 64GB Flash Memory with Keypad	Qualcomm QCS4290/ QCM4290 octa-core 2.0GHz
					N							No Scanner	
						D						13MP Side-Facing Camera / 8MP Front-Facing Camera	
							1					Android (GMS)	Google Mobile Services (GMS) certified – Play Store
							2					Android (Non-GMS)	
								0				Device Client Pack (DCP) Pre-Loaded - 1 Year Term License	Device Client Pack (DCP) with 1-year Term License, Termed License/Full License can be purchased later: DCP-001, DCP-SFT1, DCP-SFT2, DCP-SFT3, DCP-SFT4, DCP-SFT5
									S			Standard Battery	Capacity: 3,400mAh
									X			Extended Battery	Capacity: 6,800mAh
											G	Global	Argentina, Australia, Austria, Belgium, Bulgaria, Canada, China, Croatia, Cyprus, Czech Republic, Denmark, Dominican Republic, Egypt, Estonia, Finland, France, Germany, Greece, Hong Kong, Hungary, Iceland, Ireland, Italy, Japan, Latvia, Liechtenstein, Lithuania, Luxembourg, Malta, Mexico, Netherlands, New Zealand, Norway, Poland, Portugal, Romania, Russian Fed., Saudi Arabia, Serbia, Slovakia, Slovenia, South Africa, Spain, Sweden, Switzerland, Taiwan, Turkey, UAE, Ukraine, United Kingdom, United States of America





Zapraszamy do kontaktu!
Więcej informacji: www.kreski.pl



HONEYWELL EDGE SERVICES

CW45 – Repair Services

Honeywell Edge Services give you the confidence of having leading-class technologies combined with service and support plans that are designed to keep you operational for longer. For a full description of maintenance services, including terms and conditions, please see <https://sps.honeywell.com/us/en/services/productivity/support-services/maintenance-services>

Gold Repair Services – 3 Year

The Edge Services Gold Support contract allows flexibility for you to select the right coverage for your organization, including 5-Day Depot Repairs and:

Service Overview

- Repair or replacement (at Honeywell discretion) for damaged components, wear and tear, accidental damage
- Flexibility to add any Add-On Service
- Android Service - includes Android OS Upgrades, Maintenance Releases and Security Patches

PART NUMBER	DESCRIPTION
SVCCW45-SG3N	CW45, Edge Service, GOLD Maintenance Contract, 5 Day Turnaround, 3 Year , New Contract

Add-On Accessory Replacement Service

Provides replacement chargers, docks, charging cables, or scan handles should they be damaged or stop working.

ADD	SVCACC-MOB3	AddOn, Edge Service, Accessory Service , Mobility, 3 Year . Service covers docks, charger cradles, scan handles
-----	-------------	--

Add-On Battery Replacement Service

Provides replacement batteries as needed after a minimum of 18 months post-purchase.

ADD	SVCBATTERY-MOB3	AddOn, Edge Service, Battery Service, Mobility, 3 Year , 1 Replacement Battery over life of contract
-----	-----------------	---

Add-On Device Replacement Service

Replacement devices should a device be damaged beyond repair.

ADD	SVCREPLACE-MOB3	AddOn, Edge Service, Device Replacement, Mobility, 3 Year
-----	-----------------	--

Add-On Image Management Service

Ensures that when a device returns from being repaired, it has all the proper applications loaded back on the device.

ADD	SVCIMAGEMGMT-MOB3	AddOn, Edge Service, Image Service, Mobility, 3 Year
-----	-------------------	---

Add-On Spare Management Service

Manages your spare pool.

ADD	SVCSPAREMGMT-MOB3	AddOn, Edge Service, Advanced Exchange, Mobility, 3 Year . Customer owned spare pool, Minimum Purchase required, contact your local Honeywell Service Representative for more information.
-----	-------------------	---

Add-On 2-Day Turnaround Depot Upgrade

Upgrade your Gold Maintenance Contract from 5-Day to 2-Day turnaround at the repair depot.

ADD	SVC2DAYDEPOT-MOB3	AddOn, Edge Service, 2-Day Depot Upgrade, 3-Year Agreement, Requires purchase of a 3 Year Gold Maintenance Contract.
-----	-------------------	---

Platinum Repair Services – 3 Year

The Edge Services Platinum Support contract offers 2-Day Depot Repairs or Spare Pool Management with 3 year contract that includes:

Service Overview

- Repair or replacement (at Honeywell discretion) for damaged components, wear and tear, accidental damage
- SVCREPLACE-MOB3 - Replacement devices should a device be damaged beyond repair
- SVCACC-MOB3 - Accessory replacement service
- SVCBATTERY-MOB3 - Battery replacement service
- SVCSPAREMGMT-MOB3 - Spare pool management (optional, minimum quantity required)
- Telephone-based technical support
- Android Service - includes Android OS Upgrades, Maintenance Releases and Security Patches

PART NUMBER	DESCRIPTION
SVCCW45-SP3N	CW45, Edge Service, PLATINUM, 2 Day Turnaround, 3 Year , New Contract





HONEYWELL EDGE SERVICES

CW45 – Repair Services

Honeywell Edge Services give you the confidence of having leading-class technologies combined with service and support plans that are designed to keep you operational for longer. For a full description of maintenance services, including terms and conditions, please see <https://sps.honeywell.com/us/en/services/productivity/support-services/maintenance-services>

Gold Repair Services – 5 Year

The Edge Services Gold Support contract allows flexibility for you to select the right coverage for your organization, including 5-Day Depot Repairs and:

- Service Overview
- Repair or replacement (at Honeywell discretion) for damaged components, wear and tear, accidental damage
 - Flexibility to add any Add-On Service
 - Android Service - includes Android OS Upgrades, Maintenance Releases and Security Patches

PART NUMBER	DESCRIPTION
SVCCW45-SG5N	CW45, Edge Service, GOLD Maintenance Contract, 5 Day Turnaround, 5 Year , New Contract

Add-On Accessory Replacement Service

Provides replacement chargers, docks, charging cables, or scan handles should they be damaged or stop working.

ADD	SVCACC-MOB5	AddOn, Edge Service, Accessory Service , Mobility, 5 Year . Service covers docks, charger cradles, scan handles
-----	-------------	--

Add-On Battery Replacement Service

Provides replacement batteries as needed after a minimum of 18 months post-purchase.

ADD	SVCBATTERY-MOB5	AddOn, Edge Service, Battery Service, Mobility, 5 Year , 2 Replacement Battery over life of contract
-----	-----------------	---

Add-On Device Replacement Service

Replacement devices should a device be damaged beyond repair.

ADD	SVCREPLACE-MOB5	AddOn, Edge Service, Device Replacement, Mobility, 5 Year
-----	-----------------	--

Add-On Image Management Service

Ensures that when a device returns from being repaired, it has all the proper applications loaded back on the device.

ADD	SVCIMAGEMGMT-MOB5	AddOn, Edge Service, Image Service, Mobility, 5 Year
-----	-------------------	---

Add-On Spare Management Service

Manages your spare pool.

ADD	SVCSPAREMGMT-MOB5	AddOn, Edge Service, Advanced Exchange, Mobility, 5 Year . Customer owned spare pool, Minimum Purchase required, contact your local Honeywell Service Representative for more information.
-----	-------------------	---

Add-On 2-Day Turnaround Depot Upgrade

Upgrade your Gold Maintenance Contract from 5-Day to 2-Day turnaround at the repair depot.

ADD	SVC2DAYDEPOT-MOB5	AddOn, Edge Service, 2-Day Depot Upgrade, 5-Year Agreement, Requires purchase of a 5 Year Gold Maintenance Contract.
-----	-------------------	---

Platinum Repair Services – 5 Year

The Edge Services Platinum Support contract offers 2-Day Depot Repairs or Spare Pool Management with 5 year contract that includes:

- Service Overview
- Repair or replacement (at Honeywell discretion) for damaged components, wear and tear, accidental damage
 - SVCREPLACE-MOB5 - Replacement devices should a device be damaged beyond repair
 - SVCACC-MOB5 - Accessory replacement service
 - SVCBATTERY-MOB5 - Battery replacement service
 - SVCSPAREMGMT-MOB5 - Spare pool management (optional, minimum quantity required)
 - Telephone-based technical support
 - Android Service - includes Android OS Upgrades, Maintenance Releases and Security Patches

PART NUMBER	DESCRIPTION
SVCCW45-SP5N	CW45, Edge Service, PLATINUM, 2 Day Turnaround, 5 Year , New Contract






HONEYWELL REPAIR SERVICES

CW45 – Repair Services Coverage

Service options tailored to customer requirements

CW45



Warranty Cover Against Product Defect

BASIC Service

Gold Coverage:




- Accidental Damage
- Wear & Tear
- Android Service

Includes Replacement of:



- Screen Protector

Flexible GOLD Add-Ons ordered separately




- SVCACC-MOB3



- SVCBATTERY-MOB3




- SVCREPLACE-MOB3
- SVCIMAGEMGMT-MOB3
- SVCSPAREMGMT-MOB3




Platinum Coverage


- Battery Replacement
- Coverage for Docks/ Chargers
- Android Service
- Accidental Damage
- Device Replacement
- Wear & Tear




Keypad




Battery




Arm Mount



Docks



Comfort Pad



Dock Power Supplies

(3 Year – 1 replacement battery per CW45)

(5 Year – 2 replacement batteries per CW45)

COVERAGE	PART NUMBER	DESCRIPTION
BASIC	SVCCW45-EXW2	CW45, BASIC, 10-15 Day Turnaround, 2 Years (1 Year Factory Warranty + 1 Year Extended)
GOLD	SVCCW45-SG3N	CW45, Edge Service, GOLD Maintenance Contract, 5 Day Turnaround, 3 Year, New Contract
ADD	SVCACC-MOB3	AddOn, Edge Service, Accessory Service , Mobility, 3 Year. Service covers docks, charger cradles, scan handles and car adapter
ADD	SVCBATTERY-MOB3	AddOn, Edge Service, Battery Service, Mobility, 3 Year, 1 Replacement Battery over life of contract
ADD	SVCREPLACE-MOB3	AddOn, Edge Service, Device Replacement, Mobility, 3 Year
ADD	SVCIMAGEMGMT-MOB3	AddOn, Edge Service, Image Service, Mobility, 3 Year
ADD	SVCSPAREMGMT-MOB3	AddOn, Edge Service, Advanced Exchange, Mobility, 3 Year. Customer owned spare pool, Minimum Purchase required.
PLATINUM	SVCCW45-SP3N	CW45, Edge Service, PLATINUM, 2 Day Turnaround, 3 Year, New Contract



CW45 SOFTWARE

Device Client Pack

The Device Client Pack (DCP) includes Launcher, Enterprise Browser, BasicTE, and Mobility Web SDK, these applications are pre-loaded on the device. All CW45 units include a 1 Year DCP Termed Pre-License for initial evaluation of the DCP applications (it does NOT include a Perpetual Pre-License), after the 1 Year Term period expires, a Perpetual or Term license is required to be purchased. There are two licensing options that can be purchased for DCP:

1.

Perpetual License

Purchase DCP-001 - Perpetual Licenses operate without expiration for the authorized software version features, and includes 1 year of Maintenance. Add additional Software Maintenance separately.
2.

Term + Maintenance License

Purchase DCP-SFT1, DCP-SFT2, DCP-SFT3, DCP-SFT4 or DCP-SFT5 - Term + Maintenance Licenses provide software operation, software new version features, and tech support, all for a defined period.

Device Client Pack



Launcher



Launcher - gives the customer total control over which apps can be run on the device.



BasicTE



BasicTE Android device Terminal Emulation is a simplified alternative for those not yet ready to upgrade to SmartTE.



Enterprise Browser



Enterprise Browser provides corporations the ability to run standard web applications from a controlled environment.

PART NUMBER	DESCRIPTION
DCP-001	Device Client Pack Perpetual License (DCP) includes 1 Year Software Maintenance. License covers Launcher, Enterprise Browser, BasicTE, and Mobility Web SDK. Purchase additional years of Software Maintenance DCP-SFT1, DCP-SFT2, DCP-SFT3, DCP-SFT4 or DCP-SFT5 prior to maintenance expiring. Perpetual license provides continuous access to the software, but includes only one year of maintenance for updates and patches
DCP-SFT1	Device Client Pack - 1 Year Term + Maintenance (License covers Launcher, Enterprise Browser, BasicTE, and Mobility Web SDK)
DCP-SFT2	Device Client Pack - 2 Year Term + Maintenance (License covers Launcher, Enterprise Browser, BasicTE, and Mobility Web SDK)
DCP-SFT3	Device Client Pack - 3 Year Term + Maintenance (License covers Launcher, Enterprise Browser, BasicTE, and Mobility Web SDK)
DCP-SFT4	Device Client Pack - 4 Year Term + Maintenance (License covers Launcher, Enterprise Browser, BasicTE, and Mobility Web SDK)
DCP-SFT5	Device Client Pack - 5 Year Term + Maintenance (License covers Launcher, Enterprise Browser, BasicTE, and Mobility Web SDK)

Order Separately



SmartTE Terminal Emulator



Terminal Emulator – Full featured SmartTE allows legacy green screen apps to be transformed to the look and feel of native apps. These clients are single session Honeywell TE Licensing. They can also utilize traditional single or multi-session StayLinked Licenses.

SmartTE is Pre-Loaded, but requires license SMARTTE-001 to be purchased separately.

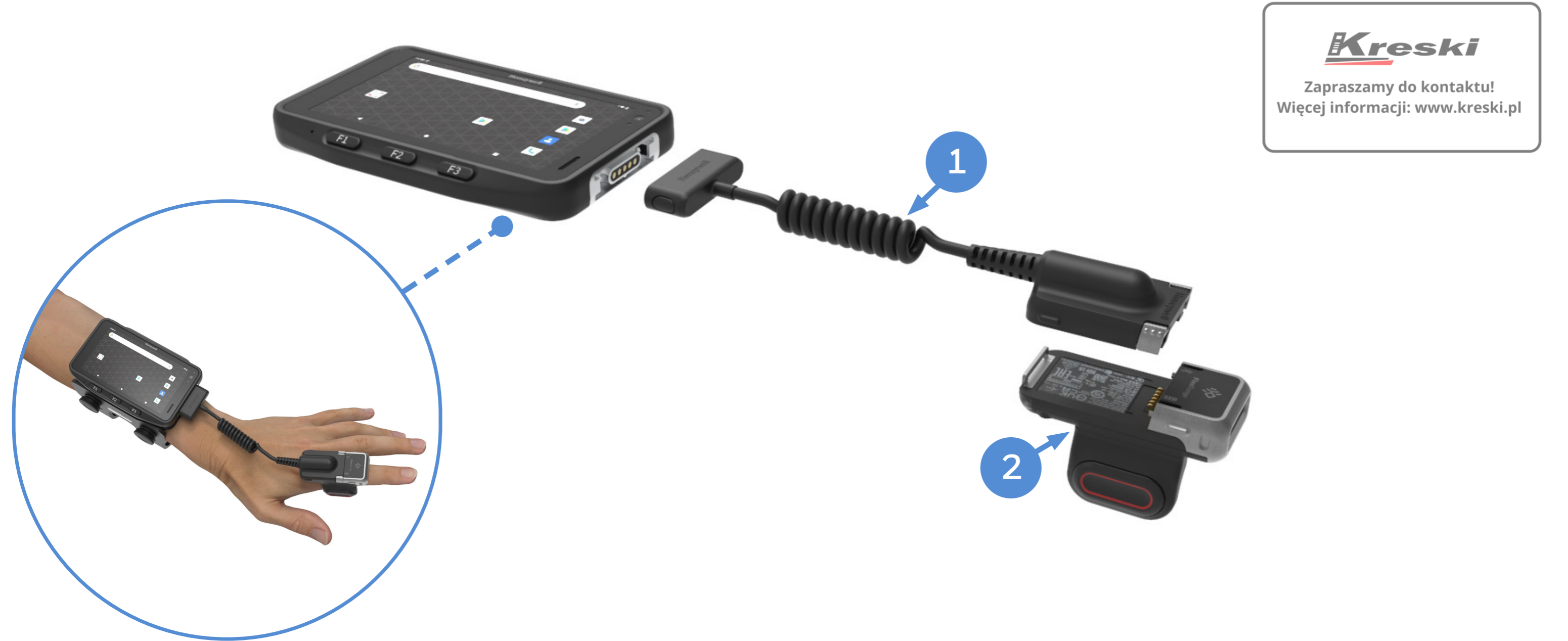
PART NUMBER	DESCRIPTION
SMARTTE-001	SmartTE Single path initial license. Includes 1 Year maintenance.
SMARTTE-SFT3	SMARTTE – 3 Year Software Maintenance
SMARTTE-SFT5	SMARTTE – 5 Year Software Maintenance
SMARTTE-SND-SFT1	SMARTTE - High availability secondary backup or development server, includes 1 Year maintenance. Not for primary server. Purchase one per device.

CW45 SCANNING

Option 1 - 8675i Tethered Ring Scanner

CW45-8675-CBL replaces the 8675i battery to provide power and communication to the 8675i as a tethered scanner connection with the CW45, can be used on either the left or right I/O connector on the CW45. Compatible with both 8675i Standard Range (SR) and 8675i FlexRange (FR) units.

Note: If the CW45 is used with the keypad configuration, this cable can only be connected on the left side of the CW45.



Kreski
Zapraszamy do kontaktu!
Więcej informacji: www.kreski.pl

	PART NUMBER	DESCRIPTION
1	CW45-8675-CBL	CW45 cabled connector to 8675i.
2	8675I400FR-2-x	8675i FlexRange™ wearable scanner, 1D, 2D. Includes battery (BAT-SCN10) and triggered ring.
OR	8675I400SR-2-x	8675i Standard Range wearable scanner, 1D, 2D. Includes battery (BAT-SCN10) and triggered ring.

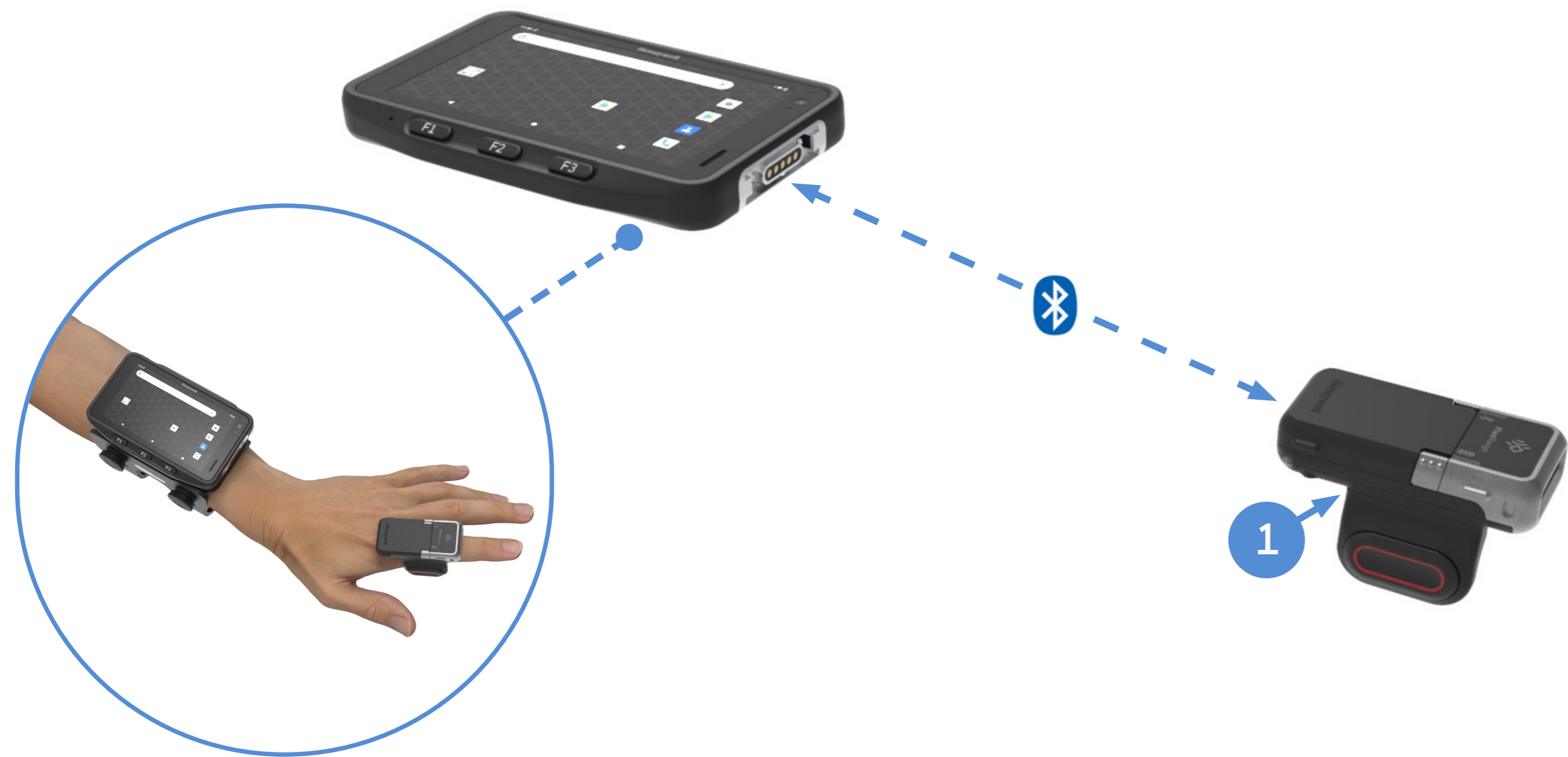
CW45 SCANNING

Option 2 - 8675i Bluetooth Ring Scanner

The CW45 supports Bluetooth scanners.
Compatible with both 8675i Standard Range (SR) and 8675i FlexRange (FR) units.



Zapraszamy do kontaktu!
Więcej informacji: www.kreski.pl



	PART NUMBER	DESCRIPTION
1	8675I400FR-2-x	8675i FlexRange™ wearable scanner, 1D, 2D. Includes battery (BAT-SCN10) and triggered ring.
OR	8675I400SR-2-x	8675i Standard Range wearable scanner, 1D, 2D. Includes battery (BAT-SCN10) and triggered ring.



CW45 DESKTOP COMMUNICATIONS

Option 1 – Portable

USB Communication to PC/ Mac OR Snap-On Charging.



	PART NUMBER	DESCRIPTION
1	CW45-SN-CNV	CW45 USB C adapter; enables connection to USB charging cable or to USB C accessories.
2	CBL-500-120-S00-05	USB type A to type C, 1.2 m (3.9 ft)

Option 2 – Fixed with Universal Cup

USB and Ethernet Communication & Single Battery Charger.



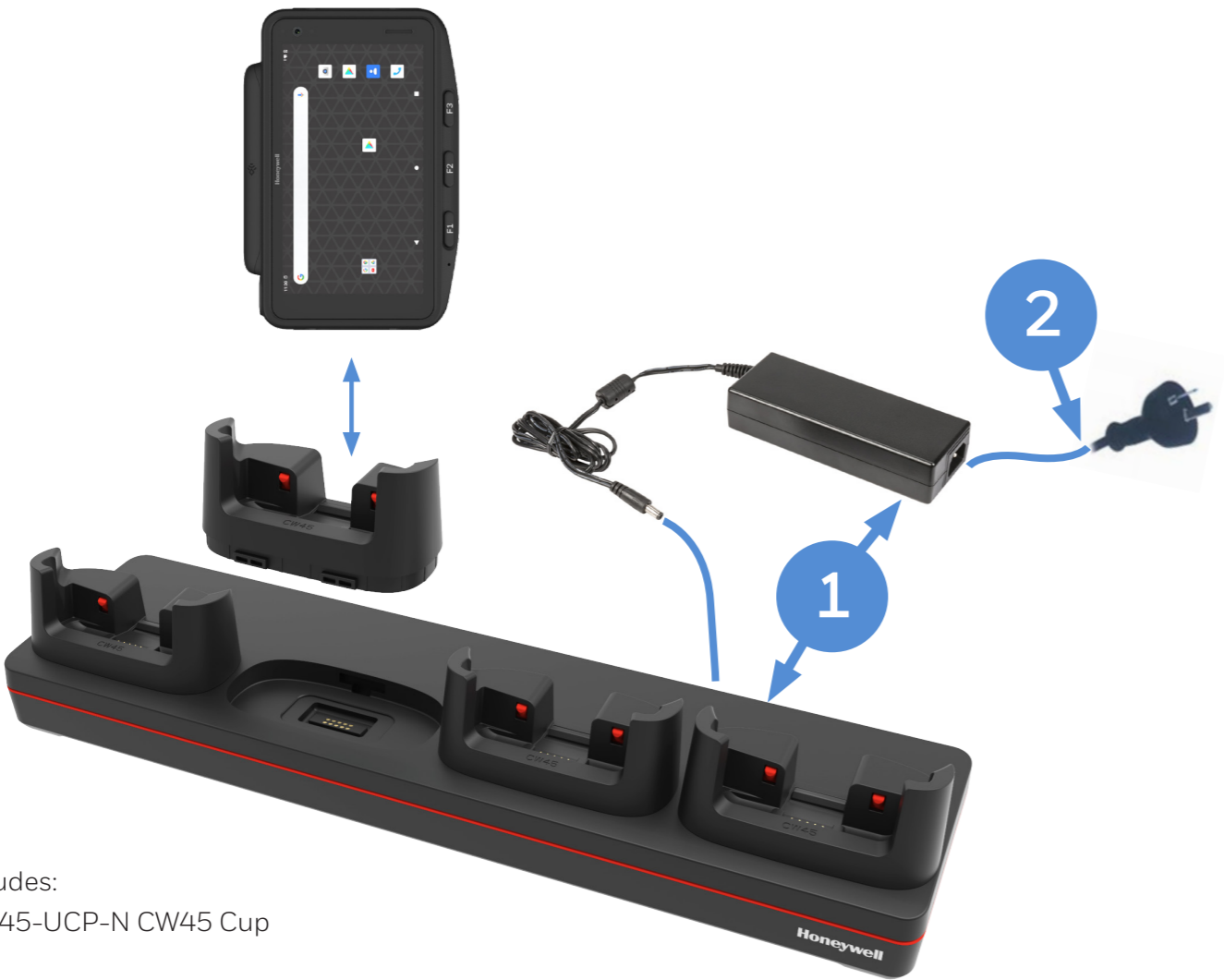
	PART NUMBER	DESCRIPTION
1	CW45-EB-UVN-0	CW45 Ethernet HomeBase - Kit includes (CW45-UCP-N), Dock & Power Supply, No Power Cord
2	321-576-004	Cable Assembly - USB Type A to Type B
3	**	Spare Battery – See Page 16 for Battery Selection
4	**	IEC C13 AC Power Cord – See Page 21 for Country Specific Power Cords



CW45 CHARGING AND COMMUNICATION

Option 1 – Quad Charger with Universal Cup

Chargebase – Quad Dock Charge Only
Netbase – Quad Dock with Ethernet



Kit Includes:
4 x CW45-UCP-N CW45 Cup

	PART NUMBER	DESCRIPTION
1	CW45-CB-UVN-0	CW45 Chargebase - Kit includes Dock and Power Supply
OR	CW45-NB-UVN-0	CW45 Netbase - For Ethernet comms, Kit includes Dock and Power Supply
2	**	IEC C13 AC Power Cord – See Page 21 for Country Specific Power Cords

Universal Cups

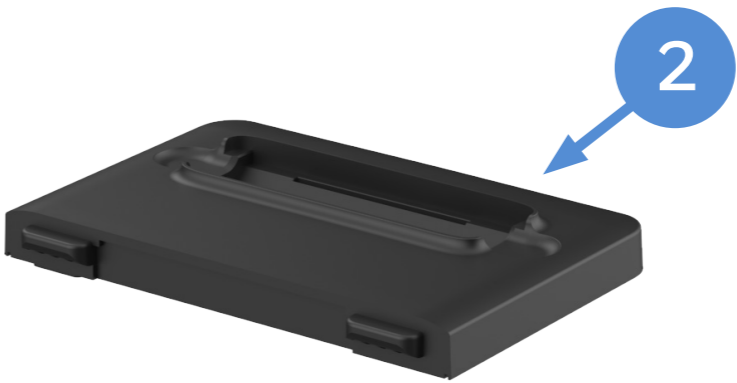
CW45 Universal Cups for use with Universal Docks



Angle View



Top View



Front Angle View



Rear Angle View

	PART NUMBER	DESCRIPTION
1	CW45-UCP-N	CW45 Cup for Universal Charging Base. Charging dock, Power Supply, and power cable required and must be ordered separately.
2	CW45-UPC-BATTHEB	CW45 Battery Cup for 1 bay home/ethernet Universal Base (CW45-EB-UVN-0). Base, Power Supply, and regional power cord required and sold separately.



CW45 CHARGING AND COMMUNICATION

Option 2 – 5-Bay Charger with Battery Cup

Chargebase – Quad Dock Charge Only (4 terminals) and Quad Battery Charger (4 Batteries)



Kit Includes:
4 x CW45-UCP-N CW45 Cup
1 x CW45-UPC-QBC Quad Battery Cup
Batteries not included.

PART NUMBER		DESCRIPTION
1	CW45-5CB-UVN-0	CW45 5 bay Universal Dock, charge up to 4 pieces of CW45 and 4 pieces of CW45 batteries. Kit includes 5 bay Universal Dock and Power Adaptor. IEC C5 Power cord must be ordered separately.
2	**	IEC C5 AC Power Cord – See Page 21 for Country Specific Power Cords

Option 3 – 5-Bay Charger with 8675i Quad Scanner Cup

Chargebase – Quad Dock Charge Only (4 terminals) and 8675i Quad Scanner Charger (4 x 8675i)



Kit Includes:
4 x CW45-UCP-N CW45 Cup
1 x UCP4-SCN10 8675i Quad Scanner Cup
8675i / Batteries not included.

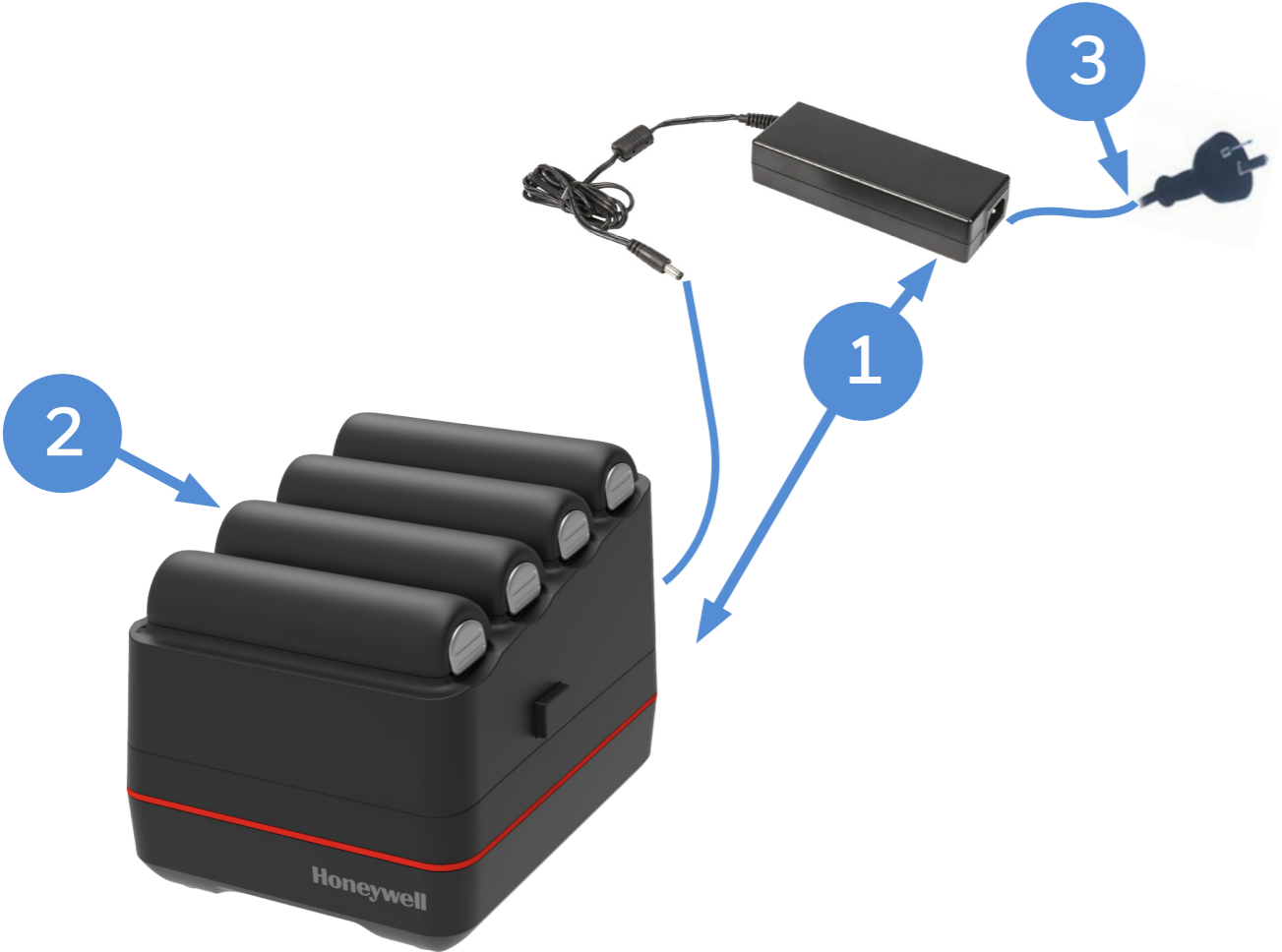
PART NUMBER		DESCRIPTION
1	CW45-5CBS-UVN-0	CW45 5 bay Universal Dock, charge up to 4 pieces of CW45 and 4 pieces of 8675i Scanners. Kit includes 5 bay Universal Dock and Power Adaptor. IEC C5 Power cord must be ordered separately.
2	**	IEC C5 AC Power Cord – See Page 21 for Country Specific Power Cords



CW45 CHARGING AND COMMUNICATION

Option 4 – Quad Battery Charger

Charge up to 4 batteries simultaneously
Supports Batteries: CW45-BAT-S - Battery, Standard, CW45 (3,400mAh)
CW45-BAT-EX - Battery, Extended, CW45 (6,800mAh)

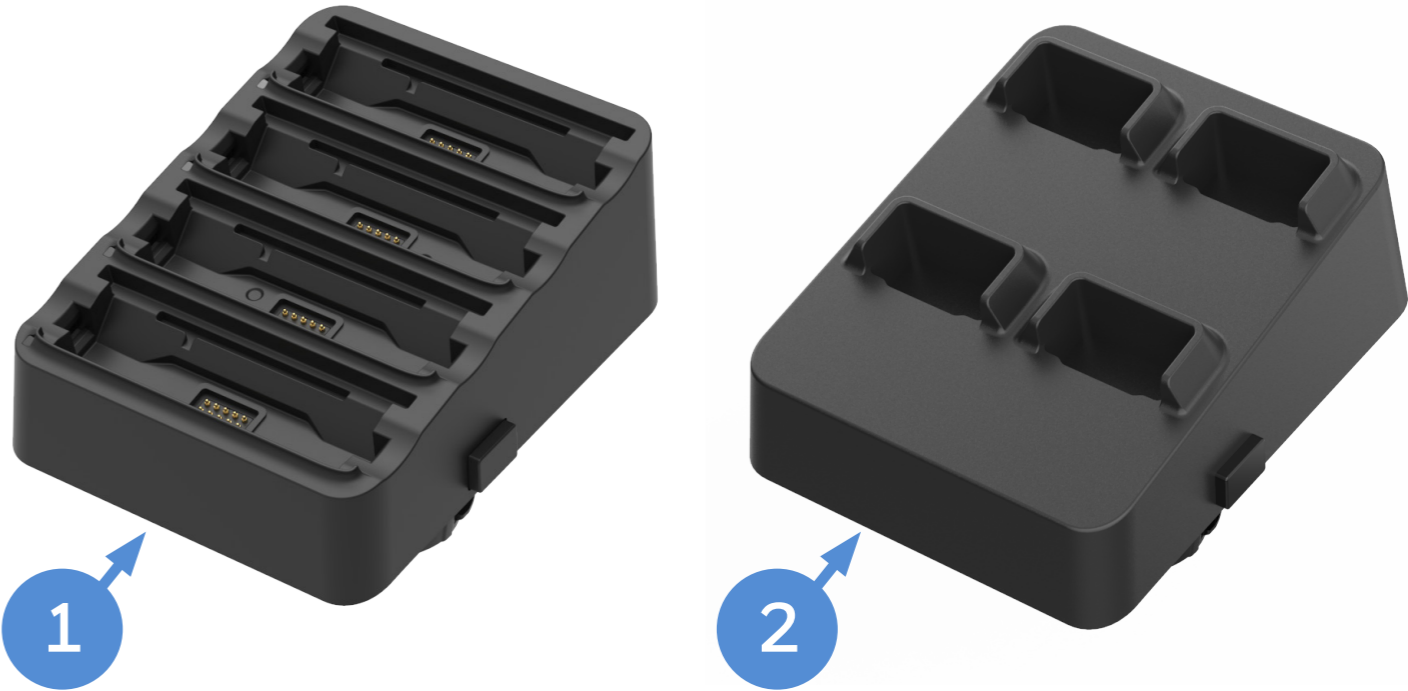


Batteries not included.

	PART NUMBER	DESCRIPTION
1	CW45-QBC-0	Quad Battery Charger - Kit includes Dock and Power Supply
2	CW45-BAT-S	CW45 Standard Battery 3,400 mAh
OR	CW45-BAT-EX	CW45 Extended Battery 6,800 mAh
3	**	IEC C13 AC Power Cord – See Page 21 for Country Specific Power Cords

Universal Cups

CW45-UPC-QBC Compatible with 5-Bay bases and Quad Battery Charger CW45-QBC-0.
UCP4-SCN10 Compatible with 5-Bay bases.



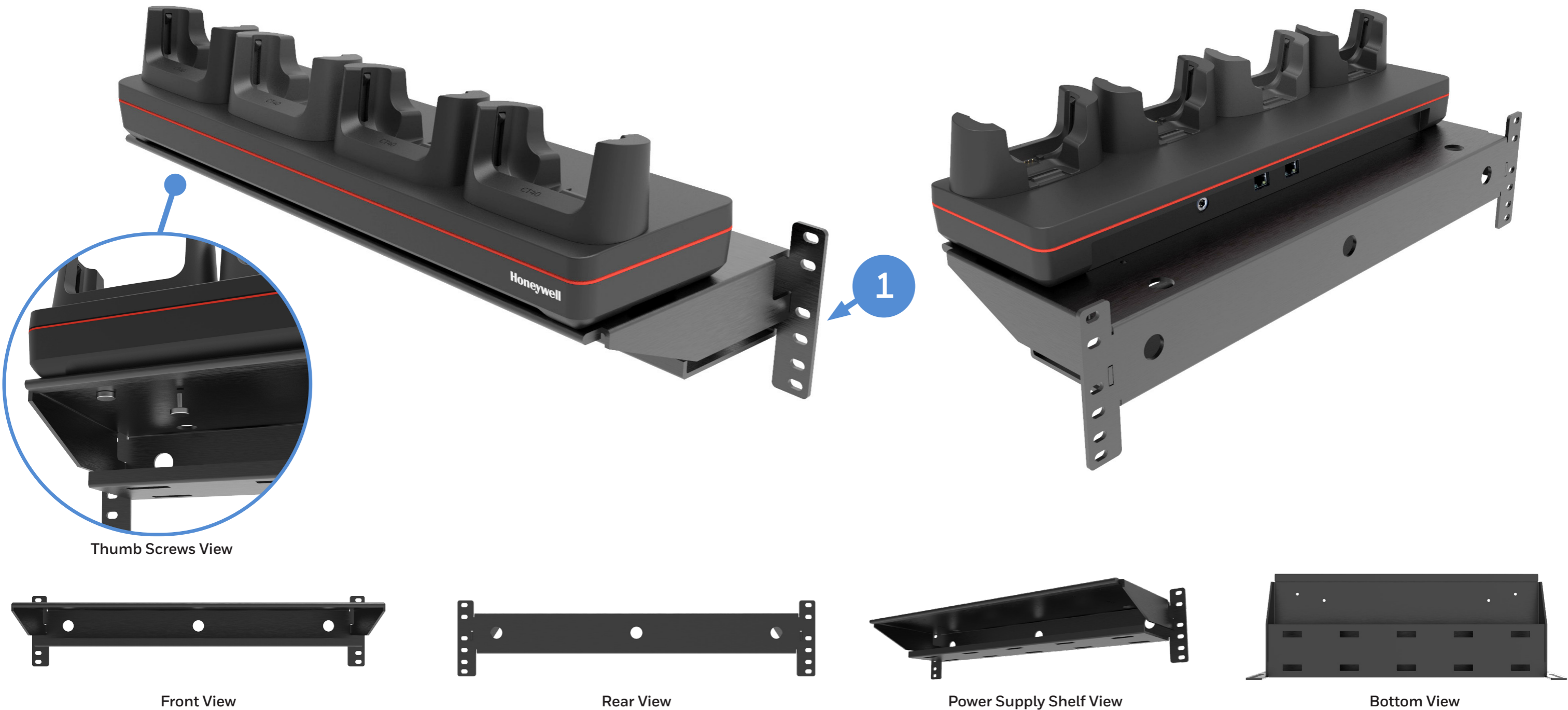
	PART NUMBER	DESCRIPTION
1	CW45-UPC-QBC	Quad CW45 Battery Charging Cup
2	UCP4-SCN10	Cup to Charge 4x 8675i scanners



CW45 CHARGING AND COMMUNICATION

Rack / Wall Mount Bracket

The Rack/Wall Mount Bracket has been optimized to work on a standard 19-inch (48cm) rack, as well as mounting directly onto a wall. Compatible with all 4-bay chargers.



	PART NUMBER	DESCRIPTION
1	CB-BK-01	4 Bay Charger Bracket, Rack / Wall Mount (includes 4 x 50180100-001 Thumb Screws M3.5x10 to securely attach the 4-bay dock to the bracket)



CW45 BATTERY

Spare Battery Options



CW45 Standard Battery
CW45-xxx-xxxxxSx

CW45 Extended Battery
CW45-xxx-xxxxxXx

	PART NUMBER	DESCRIPTION
1	CW45-BAT-S	CW45 Standard Battery 3,400 mAh
2	CW45-BAT-EX	CW45 Extended Battery 6,800 mAh



CW45 MOUNTING

Wearable Arm Strap

Choose the appropriate arm strap size to mount the CW45 comfortably and securely to the forearm.



	PART NUMBER	DESCRIPTION	SIZE
1	CW45-STRAP-S	CW45 wearable arm strap, Small . Mount required and sold separately.	Small strap: 203mm to 266mm / 8 to 10.5" circumference
2	CW45-STRAP-M	CW45 wearable arm strap, Medium . Mount required and sold separately.	Medium strap: 254mm to 343mm / 10 to 13.5" circumference
3	CW45-STRAP-L	CW45 wearable arm strap, Large . Mount required and sold separately.	Large strap: 292mm to 381mm / 11.5 to 15" circumference

Note: For arm measurement, user needs to bend their arm at 90 degrees, measure 76mm / 3" from their upper arm/ elbow, then measure the circumference of their arm.



MISCELLANEOUS

Optional Parts



PART NUMBER	DESCRIPTION
CW45-MOUNT	CW45 arm mount accessory. Includes comfort pad. Arm strap required and must be ordered separately.



PART NUMBER	DESCRIPTION
CW45-CPAD	CW45 arm mount replacement comfort pad, pack of 5.



PART NUMBER	DESCRIPTION
CW45-SP-5PK	CW45 hardened glass adhesive-backed screen protector. Pack of 5.



PART NUMBER	DESCRIPTION
CW45-KPD	CW45 extended 21-key keypad accessory. CW45 required and sold separately. Only compatible with attaching to the right side of the CW45.



PART NUMBER	DESCRIPTION
CW45-UPC-QBC	Quad CW45 Battery Charging Cup



PART NUMBER	DESCRIPTION
UCP4-SCN10	Cup to Charge 4x 8675i scanners



MISCELLANEOUS

Optional Parts

Replacement Power Supplies.



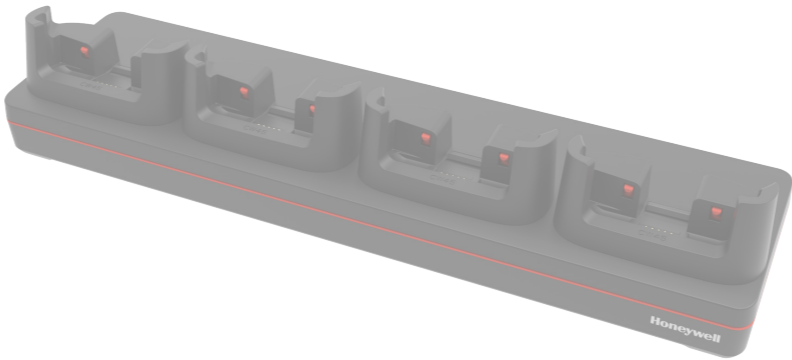
IEC C14



PART NUMBER	DESCRIPTION
50121666-001	Power Adapter,12V 3A, No Power Cord, Compatible with CT40 Homebase / eHomebase / Quad Battery Charger (Requires IEC C13 AC Power Cord)



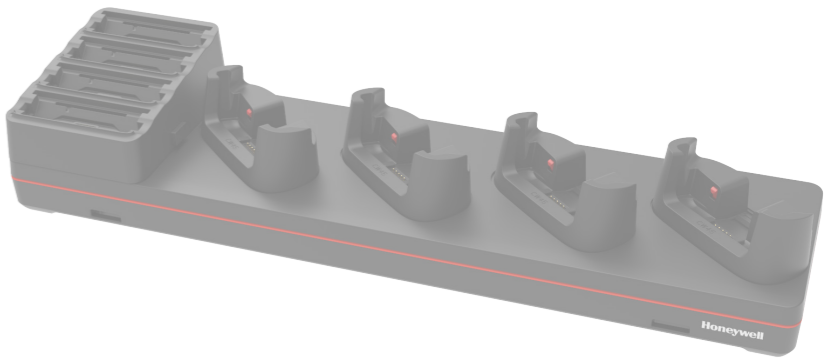
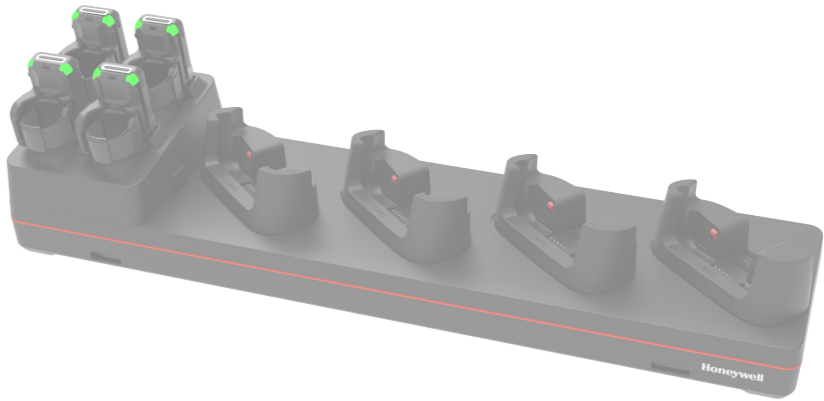
IEC C14



PART NUMBER	DESCRIPTION
50121667-001	Power Adapter,12V 7A, No Power Cord, CT40 Quad Chargebase/ Quad Netbase (Requires IEC C13 AC Power Cord)



IEC C6



PART NUMBER	DESCRIPTION
3007-3408-001	Power Supply 12V 8.3A R7B ADS-120QL-12-3 120100E 5-Bay Charge Base (Requires IEC C5 AC Power Cord)

MISCELLANEOUS

AC Cords

Regional Power Cords



AC Power - C13 Type Connector

PART NUMBER	DESCRIPTION
50117501-001	Power Cord Australia 2500mm,sled CB
321-501-002	AC Power Cord, Denmark RoHS
77900508E	Cable: power cord, power supply to AC outlet, straight, Power cord, Europe EU, IEC320-C13, 2.5 m (8.2 ft)
321-502-002	AC Power Cord, India/South Africa RoHS
321-500-002	AC Power Cord, Japan RoHS
9000093CABLE	AC POWER CABLE, C14 TYPE, SWITZERLAND 3-PIN
77900507E	Cable: power cord, power supply to AC outlet, straight - Power cord, UK, IEC320-C13, 2.5 m (8.2 ft)
1-974028-025	AC Power Cord, US RoHS



AC Power - C5 Type Connector

PART NUMBER	DESCRIPTION
3007-4681-001	C5 type power cable, USA
3007-4683-001	C5 type power cable, Europe
3007-4682-001	C5 type power cable, UK
3007-4684-001	C5 type power cable, Australia



Zapraszamy do kontaktu!
Więcej informacji: www.kreski.pl

MISCELLANEOUS

Disclaimer

Honeywell International Inc. (“HII”) reserves the right to make changes in specification and other information contained in this document without prior notice, and the reader should in all cases consult HII to determine whether any such changes have been made. The information in this publication does not represent a commitment on the part of HII.

HII shall not be liable for technical or editorial errors or omissions contained herein; nor for incidental or consequential damages resulting the furnishing, performance, or use of this material.

This document contains proprietary information that is protected by copyright. All rights are reserved. No part of this document may be photocopied, reproduced, or translated into another language with-out prior written consent of HII.

Web Address: www.honeywellaidc.com

The Bluetooth trademarks are owned by Bluetooth SIG, Inc., U.S.A and licensed to Honeywell.

Mobility Edge is a registered trademark of Honeywell International Inc. in the United States and/or other countries.

Android is a trademark or registered trademark of Google Inc. in the United States and/or other countries. Windows is a trademark or registered trademark of Microsoft Corporation.

Qualcomm is a trademark or registered trademark of Qualcomm Incorporated in the United States and/or other countries.

Other product names mentioned in the manual may be trademarks of registered trademarks of their respective companies and are the property of their respective owners.

All rights reserved.



Zapraszamy do kontaktu!
Więcej informacji: www.kreski.pl

For more information
sps.honeywell.com

**Honeywell Safety and
Productivity Solutions**
855 S Mint St
Charlotte, NC 28202
800-582-4263
www.honeywell.com