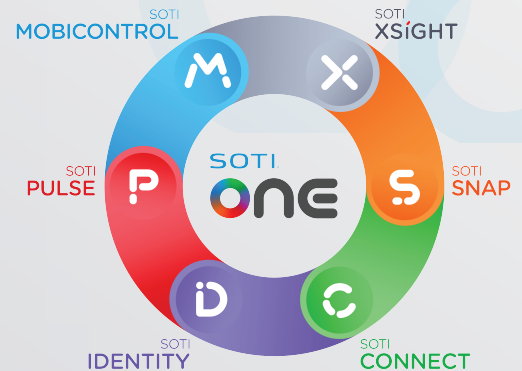


SOTI ONE PLATFORM

FALL 2023 RELEASE HIGHLIGHTS



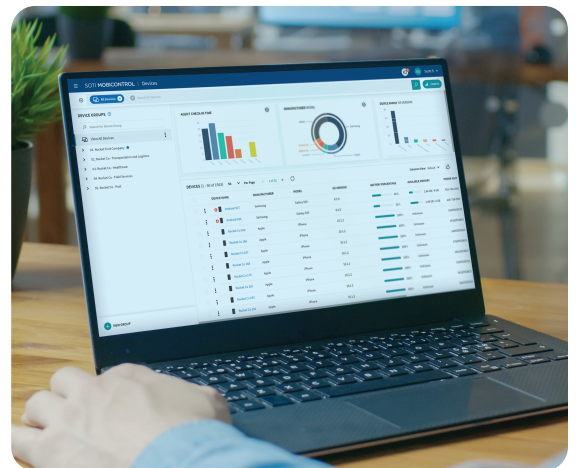
The Fall 2023 updates to the SOTI ONE Platform were announced at SOTI SYNC 23. Collectively, over 60 new features were introduced to SOTI MobiControl, SOTI XSight, SOTI Snap and SOTI Connect.

Here are the highlights of each release.

SOTI MOBICONTROL

SOTI MobiControl 2024.0 improves the productivity and security of frontline workers using shared devices and provides greater Windows device management. Here's how:

- Shared Device Mode with Microsoft Entra ID (formerly Azure Active Directory)
- Imprivata Mobile Device Access
- SOTI Mobile SSO for SAML and OIDC-capable apps
- Shared iPad for Business
- Faster device deployment with Microsoft Entra ID
- PowerShell Scripting
- Task Scheduling
- SOTI XTreme Hub support for Windows Modern Devices



WANT TO SEE ALL THE FEATURES?

[VIEW SOTI MOBICONTROL 2024.0 RELEASE NOTES](#)

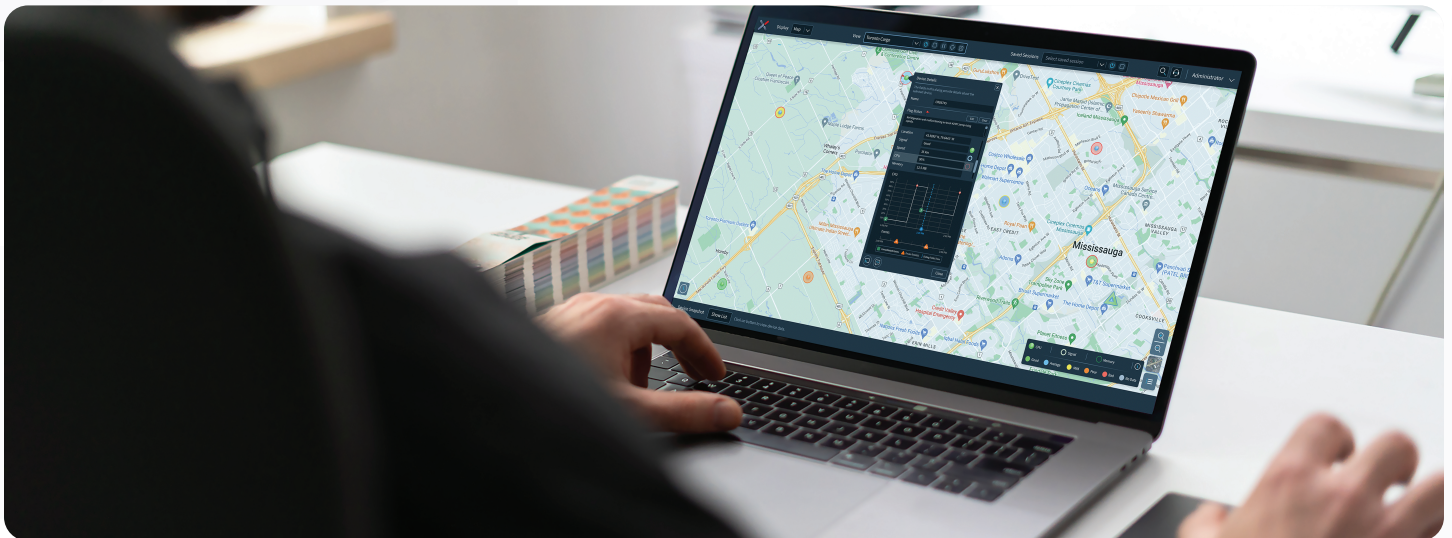
SOTI XSight 2024.0 now features the first tool of its kind: Live View. It enables businesses to visualize operations in real-time through an amazingly intuitive and powerful visual experience. There are two ways to use Live View:

LIVE VIEW MAP: Visualize the location of devices as they move in real-time and access device data (e.g., battery level, signal strength) and business data (e.g., inventory levels, delivery status). Customizable business data can be displayed from several sources. Ideal for outdoor applications where changing locations and status or inventory details are critical.

LIST VIEW: See the same customizable values from device and business sources in a list. This is ideal when devices and operations are indoors (e.g., devices in a retail store or warehouse) and business data needs to be monitored.

Live View's time machine capabilities allow IT professionals to go back in time (up to two hours) and study situational data at specific times to remedy issues.

Additionally, SOTI XSight's Operational Intelligence capabilities are now available for Windows Modern devices. This gives customers the flexibility to choose the device that works best for their business needs.



WANT TO SEE ALL THE FEATURES?
[VIEW SOTI XSIGHT 2024.0 RELEASE NOTES](#)

SOTI Snap 2024.0 is packed with new features to allow users to get things done faster and with greater accuracy:

- Business Card Reader automatically scans and captures business card data.
- Dynamic Approvers in SOTI Snap Workflow allows users to choose from a preconfigured list when sending out approval requests.
- Approval Management from the Web enables approvers to review workflows in progress and take any required action from the smartphone, tablet, laptop or desktop of their choosing.

SOTI Snap also integrates with SOTI XSight Live View. Businesses can pull data from SOTI Snap apps and see them on a Live View map.

WANT TO SEE ALL THE FEATURES?
[VIEW SOTI SNAP 2024.0 RELEASE NOTES](#)

SOTI CONNECT

SOTI Connect 2024.0 strengthens its enterprise-grade printer management features while also adding the capabilities to manage other types of devices:

- Visualization Dashboards allow users to create customized dashboards which provide a comprehensive view of multiple devices.
- Support is available for cameras which use the ONVIF protocol. Users can register, discover, enroll and perform basic functions such as check-ins and set requests.
- SNMP Support increases with the ability to register devices with host names and discover and search for devices with generic SNMP compatibility.

WANT TO SEE ALL THE FEATURES?
[VIEW SOTI CONNECT 2024.0 RELEASE NOTES](#)

TO LEARN MORE:

Contact a SOTI sales representative: sales@soti.net or visit: soti.net



Zapraszamy do kontaktu!
Więcej informacji: www.kreski.pl

SOTI is a proven innovator and industry leader for simplifying business mobility and IoT solutions by making them smarter, faster and more reliable. SOTI helps businesses around the world take mobility to endless possibilities.

soti.net