



Easily transform your legacy green screen apps to modern Android touch apps with All-touch Terminal Emulation (TE)

The Challenge: Leveraging today's Android Touchscreen Devices to Improve Workforce Productivity

New advancements in mobility like the Android operating system and its all-touch interfaces are bringing a greater level of intuitiveness and ease of use to enterprise mobile computing, enabling businesses to boost the efficiency and accuracy of everyday processes to the next level. You would like to take advantage of the new generation of enterprise-class Android devices to reap these benefits in your business, but the “green screen” terminal emulation apps at the center of your operations can’t take advantage of Android’s touch interface. In order to do so, you would need to migrate to a new mobile application, which would in turn require modifications to your host application — an extremely time-consuming and complex process that is too costly.

How will All-touch TE benefit your enterprise?

When you use All-touch TE to transform your green screen TE apps to powerful all-touch HTML5 apps, you can expect:

- Greater workforce productivity
- More units per hour/ increased throughput
- Improved order/ inventory accuracy
- Less training time required



Zapraszamy do kontaktu!
Więcej informacji: www.kreski.pl

The Solution: All-touch TE

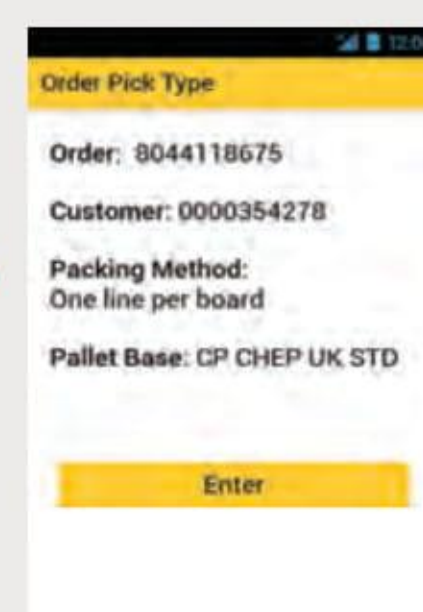
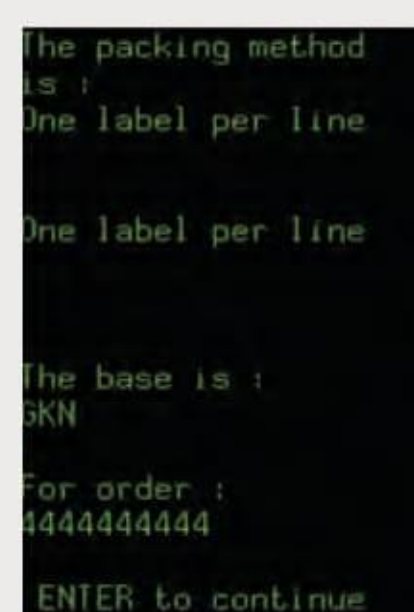
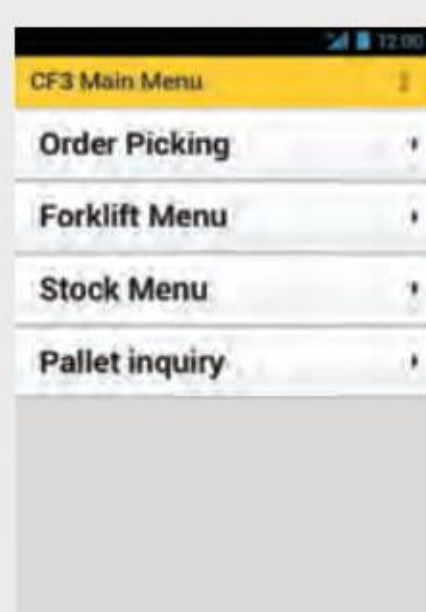
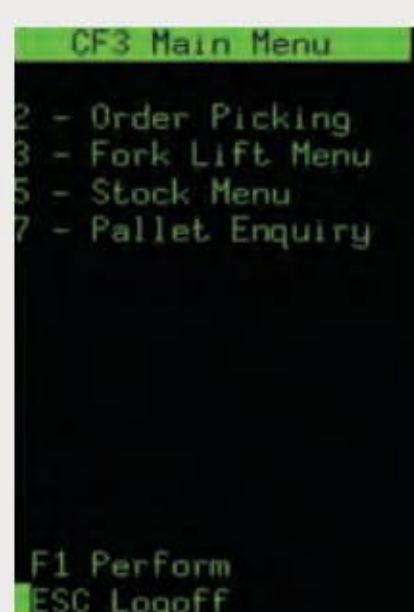
All-touch TE, powered by Wavelink, solves this dilemma by converting legacy green screen TE applications into beautiful HTML5 apps with interfaces that are every bit as intuitive and elegant as today's consumer mobile apps — without writing any code and without altering the host application. The result? You can take advantage of today's most popular operating system to simplify screens, enable users to find the information they need faster and reduce the number of steps required to perform tasks. And All-touch TE is available for Zebra's Android mobile computers, providing your organization with an easy and cost-effective migration path to the world's leading mobile operating system, Android.

All-touch TE is easy to use, no programming knowledge is required. You simply log on to a text-based host application (such as a legacy WMS or ERP app) and All-touch TE automatically converts screens into an HTML5 graphics-based touch-driven application. Powerful editing tools let you further customize screen layouts as desired and add elements as needed — from color themes to branding — without having to write a line of code. The major investment in your host application is preserved, yet you are able to quickly and easily implement today's modern touch applications to boost the productivity of your workforce.

Key features

- **Automatically convert traditional “green screen” apps to elegant and intuitive Android touchscreen apps — without coding.** Just turn on a Zebra Android mobile computer, open the All-touch TE next generation enterprise browser and log on to your text-based host application (such as WMS or ERP) to automatically convert every screen into an HTML5 graphics-based touch screen.
- **No host modifications required.** You can convert legacy TE apps to today's beautiful and intuitive HTML5 web-based apps without making any modifications to the host.
- **Apply themes for a consistent graphic look and feel.** Define fonts, font colors, button colors, button sizes, background colors, field styles and more in powerful style sheets that can be applied to all screens with the press of a button.
- **Choose navigation and data entry style.** You determine how users navigate the screens and enter data. Touch navigation can include gesture controls such as pinch-to-zoom and panning. You can provide a soft keyboard of your choosing — a standard alpha, numeric or alphanumeric keyboard or a custom keyboard you create that is relevant to a specific task. And you can enable workers to utilize a hard keypad integrated into the mobile device.
- **Automatically define information hierarchy for superior readability.** To improve readability, every screen element is automatically identified and placed in the proper screen section.
- **Convert functions to intuitive icons.** Simplify processes by replacing multiple keystrokes with the press of a single icon. For instance, you can replace a line of text instructions, like “Press F12 to print”, with a printer icon.
- **Session persistence protects worker productivity.** Warehouse workers, delivery drivers and more are nearly always on the move. Depending upon their location, the strength of the wireless connection will fluctuate. With All-touch TE, sessions remain active, even if workers are moving between Wi-Fi and cellular networks, the connection is completely lost or the mobile computer reboots or enters sleep mode.
- **Superior performance over Wi-Fi and cellular networks.** The All-touch TE engine is designed specifically for wireless connectivity, providing the fast screen refresh rates today's users expect.
- **Automatic identification of conversion exceptions.** If the screen data cannot be properly identified for conversion, the green screen remains in the converted application, where it is easy to locate for manual re-design.

Turn your green screen apps into beautiful HTML5 all-touch TE apps that run on Zebra Android mobile computers — without writing one line of code.



How All-touch TE Works

All-touch TE utilizes predictive formatting to automatically apply a more modern appearance to your existing screens. Then through the use of our powerful easy-to-use editing tools, you can customize your new All-touch screens as needed to match your company's style guides and user needs, add new elements to modify workflow and more.

What makes All-touch TE so unique is that you have complete control over how your screens look and feel, without requiring programming knowledge. IT, warehouse managers and others can make whatever changes are needed — from creating a customized keyboard for data entry on a specific screen to adding the company logo.

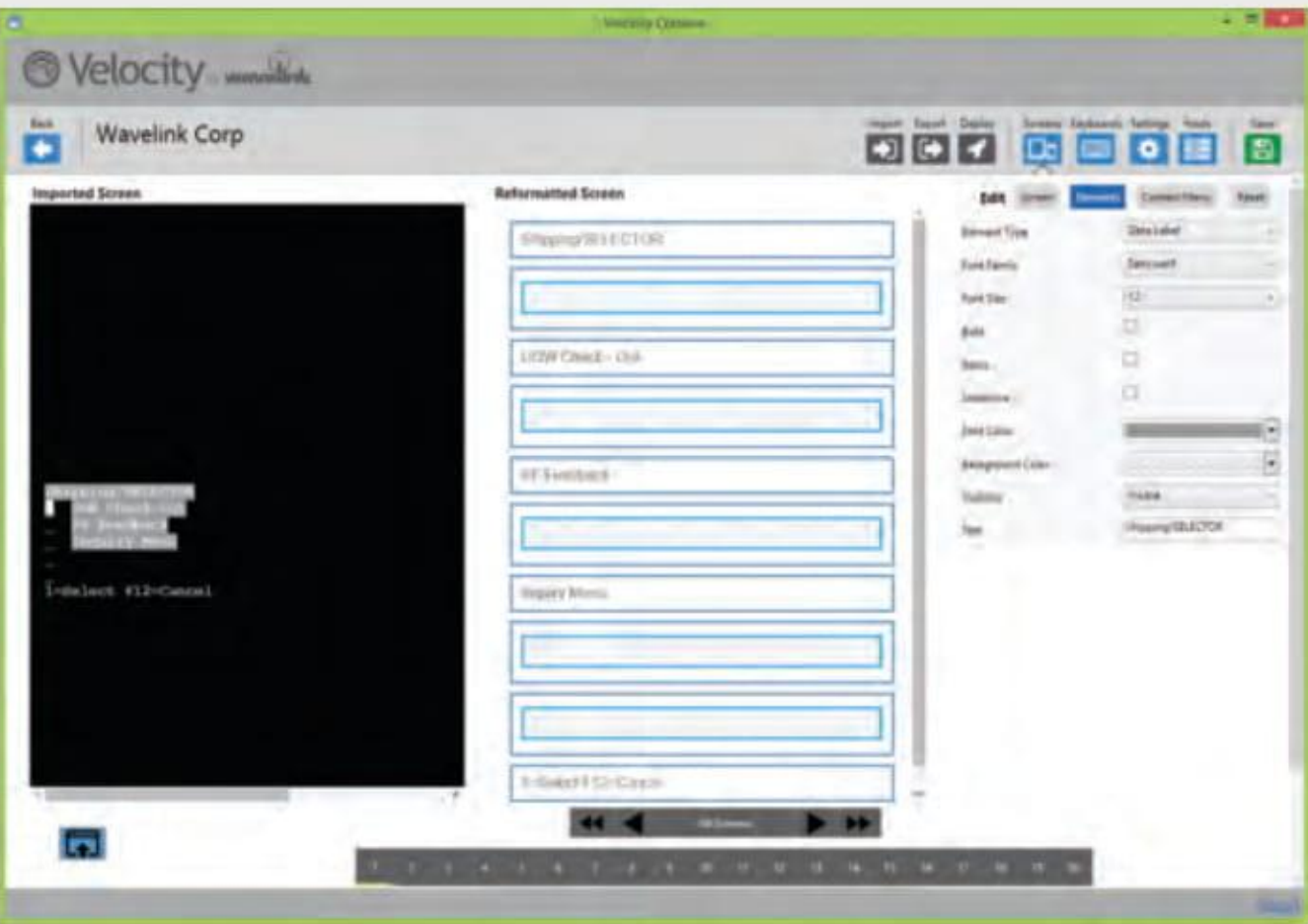
The All-touch TE Console* application

Your new HTML5 screens are generated from your existing legacy TE application. The screens are imported into the All-touch TE Console application, where you can create styles to be applied to all screens, edit individual screens as desired, create soft keypads for touch-style data entry and prepare the app for deployment on Zebra Android mobile computers with the All-touch TE Client installed. Since the All-touch TE console runs on Windows 8, you can install it on an existing computer — no special server required.

The All-touch TE Client* application

The All-touch TE client runs the application, and serves as a proxy overlay between the host application and what the end users see. The client comes with a built-in HTML and CSS rendering engine to apply all the formatting you have created for your green screen app.

ALL-TOUCH TE CONSOLE*



The All-touch TE Console provides the administrative interface to let you import green screens, create custom screen styles and keyboards, and then export final apps to your end devices

ALL-TOUCH KEYBOARD CONSOLE*



All-touch TE's powerful keyboard editor lets you edit a keyboard's layout, create custom keys, drag and drop pre-defined keys, and more...making data entry as easy as possible for each application

* Note: All-touch TE is powered by Wavelink.

Four Easy Steps from Text-based to Touchscreen

The following section will describe the general four-step process to convert green screen TE apps to HTML5 apps — from initial automated conversion to customization and distribution to mobile devices.

1 Capture your existing green screens

The first step is to capture the existing screens that you want to update. This is done through the All-touch TE client installed on a Windows CE mobile device or any Windows PC. From the device (or PC), log on to your legacy “green screen” app, select screen capture, and then start navigating through all the screens in the application. You’ll need to access each screen that you want to update.

The All-touch TE client will automatically re-format each green screen using its predictive formatting engine. You can view your ‘before’ (TE) and after (HTML) screen shots side by side. If the new screens are ready to use as is, you can start using them right away. Or, you can import the saved screens into the All-touch TE Console in order to edit.

2 Modify screens in the All-touch TE Console

You can import your existing All-touch TE screens to a project in the Console in order to apply styled themes or edit individual screen elements. The original green version of the screen is displayed on the left pane, while its reformatted appearance using predictive formatting is displayed in the center pane.

If you choose to edit the appearance of the screen, you can use the tools on the right. All-touch TE provides an intuitive GUI for making any customization that you wish. For example, you can easily...

- Change the background color
- Add a banner to the top that contains a title or logo
- Define the font style/color/size for any of your text elements
- Decide to hide or display an item — or even add a new menu item
- Define whether screens should be displayed in landscape or portrait mode — or select dynamic where the screen automatically adjusts based on device orientation
- Define whether to show or hide a soft keyboard for each field

In addition, All-touch TE lets you define and apply styles to a certain screen or all screens, enabling you to customize multiple screens at once. For example, you can create a certain style template for “Picking” or “Shipping” — and any screen that contains this word will be formatted accordingly.

3 Create custom keyboards

All-touch TE lets you offer your users the easiest data entry experience possible for each screen in your application. Using the Console, you can create any kind of custom keyboard, as well as define keyboard usage rules.

To create a custom keyboard...

- Start with a standard keyboard template that’s closest to your desired keyboard, such as QWERTY, 5250 Numeric Portrait, 5250 Symbolic Portrait
- Add, change, and delete keys using the drag-and-drop editor
- Define attributes for the new keys, including text color, key color, key color when pressed, feedback on keypress (i.e. vibration felt at the fingertips or glow effect)
- You can assign multiple values to keys and associate them with states, such as a shifted or long press state

4 Deploy your application

Once your application is ready, it can be deployed to any Zebra Android mobile device that supports the All-touch TE client. The first step is to create a .zip file for your project that contains the .xml file, along with any scripts, images, custom keyboards, and themes used for the application. The All-touch TE Console offers multiple ways to deploy your application to the client devices:

- You can manually install on each device via an SD card. Simply load the card into the Android device and launch the All-touch TE client. The application will automatically extract the .zip file and is immediately available for use
- You can use your MDM software, such as Wavelink Avalanche, to distribute the .zip file “hands-free” to all your devices

The Benefits of All-touch TE

By delivering a more modern, intuitive client app experience, All-touch TE increases worker productivity and task accuracy to help businesses meet the faster pace and rising complexity of today's warehousing and supply chain operations.

- **Improved workforce productivity:** Tasks require fewer keystrokes — multiple menus and multiple keystrokes required to perform a specific task can be reduced to a few key presses. In addition, the ability to create a visual hierarchy of information makes it easy for users to find the information that matters. As a result, users can navigate screens faster and with greater accuracy, reducing errors and the time spent on task.
- **Reduced training requirements:** By providing workers with the same familiar interfaces in their smartphone and tablet apps, your apps are easier to learn and use, practically eliminating the need for training — particularly important for businesses with high employee turnover and a large number of temporary workers.
- **Modernize your host apps — without high cost, risk or disruption in your business:** All-touch TE helps you avoid the costs, risks and effort associated with mobile application migration. Your workers get a rich, intuitive mobile app experience, while your software developers are available to focus on other projects you need to accomplish.
- **Maximize the value of your technology investments.** Now you can provide your workforce with more efficient interactions with your host application. And you can more fully utilize the features on Zebra Android mobile computers — from the touch interface to better use of screen real estate.

CONVERT YOUR LEGACY TERMINAL EMULATION APPS INTO POWERFUL INTUITIVE HTML5 APPS TO REDUCE KEYSTROKES, IMPROVE PROCESS EFFICIENCY AND WORKER PRODUCTIVITY IN YOUR ENTERPRISE.

FOR MORE INFORMATION, VISIT WWW.ZEBRA.COM/ALLTOUCHTE OR ACCESS OUR GLOBAL DIRECTORY AT WWW.ZEBRA.COM/CONTACT



Zapraszamy do kontaktu!
Więcej informacji: www.kreski.pl