

# GETAC T800 ACCESSORY SPEC BROCHURE

## T800

Fully Rugged  
Tablet



Always Ready Always Rugged

# HAND STRAP

## Features & Benefits

The adjustable strap is designed to keep the T800 secured to user's hand and easier to carry.

### Product Information

Main part : 163.3 x 87.1 mm

Belt parts : 55mm (upper) ; 120mm (lower)

Main Material : PU

### SKU ID

SKU ID : GMHSX9

### Product Photo





# SHOULDER STRAP 2-Point

## Features & Benefits

The 2-point shoulder strap provides a quick and comfortable handsfree carrying option of the T800. The strap length is adjustable by using the slide adjusters for height. Also, it fits most body sizes for both cross-body and shoulder carry.

### Product Information

Length : 1740mm  
Main Material : Nylon

### SKU ID

SKU ID : GMS2X2

### Product Photo



# WRIST STRAP

## Features & Benefits

This wrist strap is designed to prevent accidental drops and provide extra hand support and stability while holding the T800 tablet with one hand.

### Product Information

Length : 257mm  
Material : Polyester

### SKU ID

SKU ID : GMRSX1

### Product Photo





# OFFICE DOCK with AC Adapter

## Features & Benefits

The Getac office dock brings out multiple I/O ports for connecting essential peripheral devices in the office environment. Through the integrated ethernet, HDMI, or USB connections, users can quickly collect and synchronize field data with central offices for real-time reporting and analytics.

### Product Information

Dimension :

215mm x 170mm x 205mm

Weight : 1000g

Docking Connector : POGO

\* w / 90W AC Adapter

I / O Ports :

DC in Jack x 1

Audio Output x 1

USB 2.0 x 3

USB3.0 x 1

VGA x 1

LAN x 1

HDMI x 1

Microphone x 1

Kensington Lock x 1

### SKU ID

SKU ID : GDOF\*Y

\* EU = E, US = U, UK = K, AU = A, PR = C,  
TW = T - Power cords

### Product Photo



# 65W AC ADAPTER with Power Cord

## Features & Benefits

This adapter is designed to power the device and charge its internal battery from an AC power source. A country-specific power cord is included with the adapter to fit the local power outlet in your designated country.

### Product Information

Input : 100V-240V, 50~60Hz, 1.5A

Output : 19V, 3.42A, 65W

Dimensions :

L 108.3 x W 46.3 x H 30mm

Weight : 250g

Input cable length : 1830mm

Output cable length. : 1500mm

### SKU ID

SKU ID : GAA6\*5

\* EU = E, US = U, UK = K, AU = A,  
PR = C, TW = T - Power cords

### Product Photo





# 120W VEHICLE ADAPTER

## Features & Benefits

The 120W vehicle adapter comes with a choice of two types of connections: a bare wire with individual wire ends already stripped, and a cigarette lighter plug for easy connection to the cigarette lighter socket in the vehicle interior, providing a convenient way to charge and power your tablet while you are on the road.

### Product Information

Input Voltage : 11VDC~32VDC  
Output Voltage : 19VDC  
Output current : 6.32A Max.

Case Dimensions :  
L 131.5 x W 65.6 x H 30mm  
Weight : 362g  
Input cable length : 1900mm  
Output cable length : 1000mm

### SKU ID

SKU ID : GAD2X4  
(Cigarette Lighter Plug Version)  
GAD2X8 (Bare Wire Version)

### Product Photo



Cigarette Lighter Plug Version



Bare Wire Version

# CARRY BAG

## Features & Benefits

Constructed of durable Nylon/air mesh fabric, and featuring an adjustable padded shoulder strap, this compact carry bag provides sturdy protection for your T800 tablet while giving maximum comfort.

The zippered compartments with multi-functional pockets inside offer the optimal solution to transport the tablet and all of its accessories together in one case, delivering extra convenience and go-anywhere productivity to mobile professionals.

### Product Information

Dimensions :

L 255 x W 230 x H 123mm

Weight : 560g

Main Materials : Nylon, air mesh fabric

### SKU ID

SKU ID : GMBCX3

### Product Photo





# CAPACITIVE STYLUS & TETHER

## Features & Benefits

This capacitive stylus is lightweight and easy to control, allowing smooth and comfortable interaction with the touch screen without worrying about scratching the screen or leaving fingerprints on it. The stylus comes with a detachable stylus holder for convenient storage and carrying of it, as well as a tether to keep the stylus attached to the tablet, so it doesn't get lost or misplaced.

### Product Information

Stylus Dimensions :

107.5mm ; Ø9mm

Tip size : 3.8mm ; Ø3.5mm

Tether Length : 304mm

### SKU ID

SKU ID : GMPSXG

### Product Photo



# DIGITIZER PEN

## Features & Benefits

The digitizer pen provides a more accurate and easy way for data entry and handwritten signature. A shortcut button allows the right mouse button functionality when using the pen.

### Product Information

Stylus Dimensions :  
107.5 x 9.8 mm (Max.) ; Ø9.0mm  
Tip size : 2.5mm ; Ø1.7mm  
Tether Length : 304mm

### SKU ID

SKU ID : GMPDX2

### Product Photo





# PROTECTION FILM AG

## Features & Benefits

This screen protection film is cut precisely to fit the T800 tablet and is easy to install and remove without leaving a sticky residue. With anti-glare coating, it not only protects the screen from the rigors of daily use but also helps to diffuse light on the screen and reduces glare, providing effortless readability for displayed information under common ambient lighting conditions.

### Product Information

Dimensions :

L 198.2 x W 140.2 x D 0.152mm

Main Material : PET

### SKU ID

SKU ID : GMPFX8

### Product Photo



# SNAPBACK-EXTENSION BATTERY

## Features & Benefits

This second battery pack is a snap-on module to provide T800 with extra battery power. The battery pack itself has an LED to display the estimated battery charge.

Users can press the button to see the number of segments that light green.

### Product Information

Battery Type : Lithium-ion

Nominal Voltage : 14.8V

Typical Capacity : 2100 mAh

Battery Pack Weight : 285g

### SKU ID

SKU ID : GBS4X1

### Product Photo





# SNAPBACK-SMARTCARD AND HF RFID READER RFID/NFC Combo

## Features & Benefits

This snap-on module is a 2-in-1 card reader that can read, Smart cards, (NFC) Near Field Communication and RFID (Radio-frequency identification) tags of 14443-A, 14443-B, and 15693 types

### Product Information

Dimension : 195 x 150mm

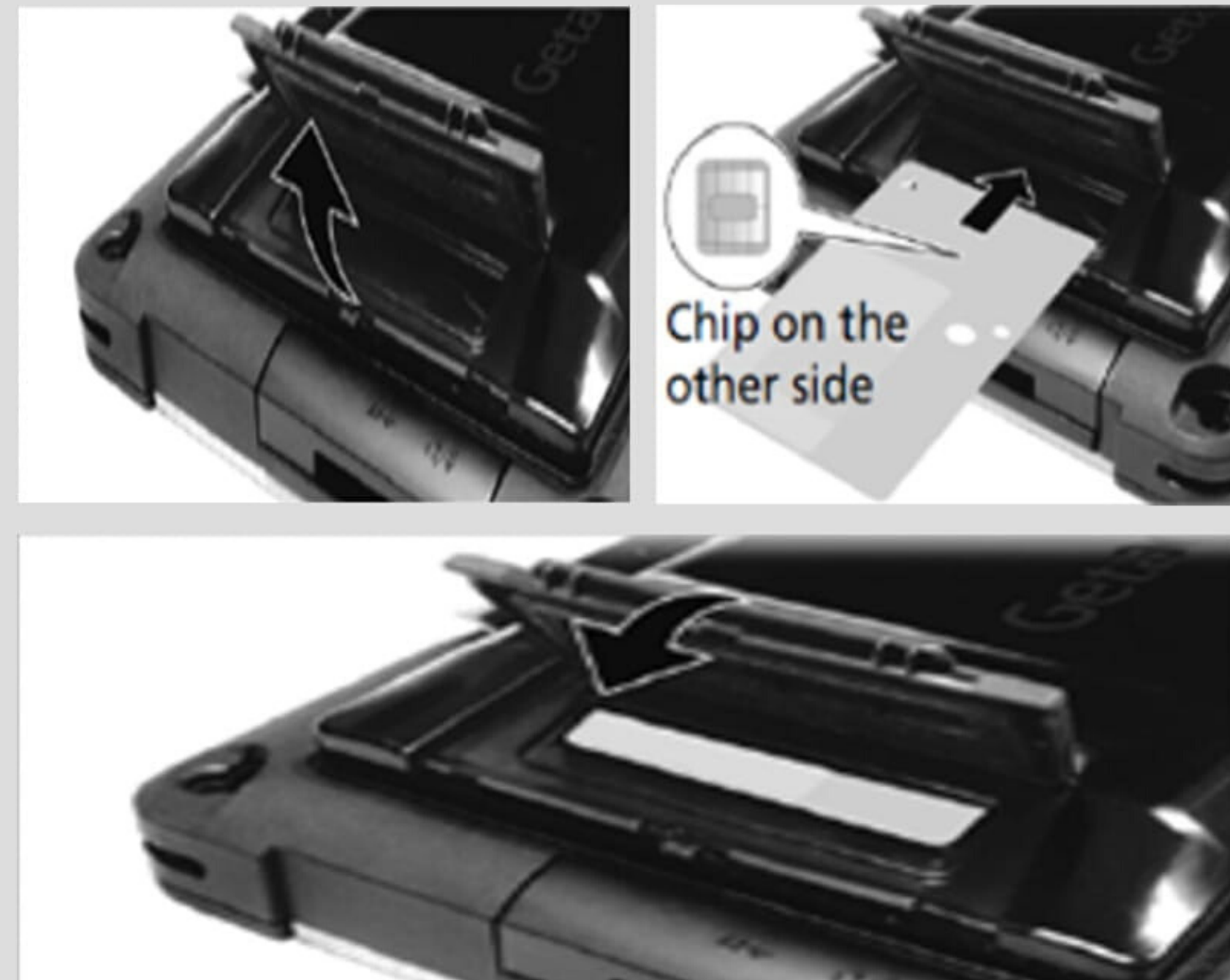
Weight : 150g

Thickness : 14.5mm

### SKU ID

SKU ID : GORSX2

### Product Photo



# SNAPBACK-SMARTCARD & MAGNETIC STRIP READER

## Features & Benefits

This snapback with MSR is designed for access control applications. With simple installation, users can easily snap on the accessory.

Moreover, this accessory has an IP65 rating, which means the snapback can be operated even in rain conditions.

### Product Information

Dimension : 195 x 150mm

Weight : 175g

Thickness : 19mm

### SKU ID

SKU ID : GOMSX1

### Product Photo





# SNAPBACK-SMART CARD & UHF RFID READER

## Features & Benefits

This snap on module is a 2-in-1 card reader that can read: Smart cards, UHF RFID tags of EPC Class 1 Gen2 ISO18000-63 standards. It comes in two models for different regions: US (902~928MHz) and EU (865~868MHz)

The UHF antenna is located at the center of the module. The maximum reading distance is determined by the design and size of individual tags.

### Product Information

Dimension : 195 x 150mm

Weight : 215g

Thickness : 34mm

### SKU ID

SKU ID : GORSX3 (US only)

GORSX4 (EU only)

### Product Photo



# EXTERNAL DUAL BAY MAIN BATTERY CHARGER

## Features & Benefits

This external dual-bay main battery charger is designed to charge up to 2 main batteries at the same time. It provides you the benefit of charging and storing the 2 main batteries together when there is limited space or power sockets.

### Product Information

Dimension : L 160 x W 180 x H 72.5mm

Weight : 1.2kg

Number of LEDs : 5 per bay

AC-in power 100 V~240 V

DC Output 13.05 V, 2.4 A Max.

Number of charge bays : 2 bays

### SKU ID

SKU ID : GCMC\*5

\* EU = E, US = U, UK = K, AU = A,  
PR = C, TW = T - Power cords

### Product Photo





# MULTI-BAY EXPANDED BATTERY CHARGER 8 Bay

## Features & Benefits

The 8-bay multi-battery charger is designed to charge multiple battery packs simultaneously and provide users an efficient charging solution.

### Product Information

Dimension :

L 465 x W 245 x H 95.3~111.3mm

Weight : 4.7 kg ,not including battery packs

AC Input : 100V~240V AC, 4.2A  
50~60Hz

DC Output : 19.5V, 16.9A

\* w / 330W AC Adapter

Number of charge bays : 8 bays

### SKU ID

SKU ID : GCEC\*B

\* EU = E, US = U, UK = K, AU = A,  
CN = C - Power cords

### Product Photo



# MULTI-BAY EXPANDED BATTERY DOCK <sup>6 Bay</sup>

## Features & Benefits

The 6-bay multi-battery dock is designed to charge multiple battery packs simultaneously and provide users an efficient charging solution.

### Product Information

Dimension : L 465 x W 245 x H 162.5mm

Weight : 6.5kg (14.4lbs), not including battery packs

AC-in power 100 V~240 V ; 50~60Hz ; 4.5A

DC Output 19 V, 1.5~14.5 A

Number of charge bay : 6 Bay

### SKU ID

SKU ID : GC6C\*1

\* EU = E, US = U, UK = K, AU = A  
- Power cords

### Product Photo





# MAIN BATTERY



Zapraszamy do kontaktu!  
Więcej informacji: [www.kreski.pl](http://www.kreski.pl)

## Features & Benefits

The T800 Main Battery is designed to provide a main power source for the device when the AC adapter is not connected/charged. The battery icon at the back of the battery pack changes appearance to display the current state of the battery. When the battery is low, it alerts users to take action as a reminder to help maintain optimal battery performance.

### Product Information

Battery Type : Lithium-ion  
Capacity : 7.4V, 4100mAh  
(31.08 Wh)  
Battery Pack Weight : 215g

### SKU ID

SKU ID : GBM4X1

### Product Photo

