



ZEBRA

Smartrac DogBone UCODE 8 Inlay

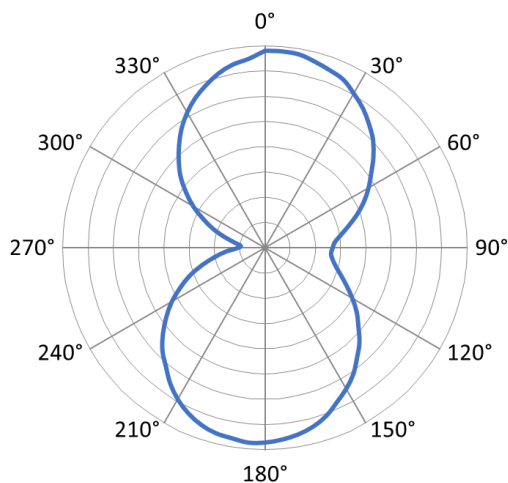
FEATURES

- High sensitivity: read range up to 19m in free space
- Optimized to be read from nearly any angle
- Performs well when placed on or near challenging materials (i.e. pallets, freight)
- Pre-tested with Zebra printers and readers
- Applications: Case / Pallet, Freight, Assets
- Global item – works with FCC and ETSI frequencies
- Inlay performance has been tested and profiled by Auburn University RFID Lab and has been added to the ARC Performance Data Library

ADDITIONAL DETAILS

- IC: NXP UCODE 8
- Read Sensitivity: -23dBm
- Write Sensitivity: -18dBm
- EPC memory: 128 bit
- User memory: N/A
- TID: 96 bit factory locked (48 bit unique)
- EPC Gen2v2
- Inlay size – 94 x 24mm

ORIENTATION SENSITIVITY



THEORETICAL * READ RANGES ON VARIOUS SURFACES (m)

Material	ETSI (865-868 MHz)	FCC (902-928 MHz)
Air	19	16
Cardboard	14	12
Fiberglass	11	12
Glass	13	15
PTFE	14	12
Polyacetyl	12	11
PVC	12	12
Rubber	11	12

*Theoretical read range data is meant to be directional. Actual performance will depend on your application and environment. Testing is recommended.

SUGGESTED APPLICATIONS

- RFID labeling



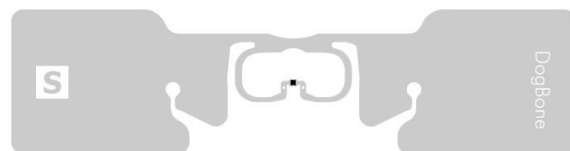
- Case/pallet labeling



- Transportation & Logistics



- Warehouse labeling



For more information, visit www.zebra.com/supplies

Product Performance and Suitability: The information contained in this document is to be used for guidance only and is not intended for use in setting specifications. All purchasers of Zebra products shall be solely responsible for independently determining if the product conforms to all requirements of their unique application.

NA and Corporate Headquarters | +1 800 423 0442 | inquiry4@zebra.com

©2016 ZIH Corp and/or its affiliates. All rights reserved. ZEBRA and the stylized Zebra head are trademarks of ZIH Corp, registered in many jurisdictions worldwide. All other trademarks are the property of their respective owners. 09/2016