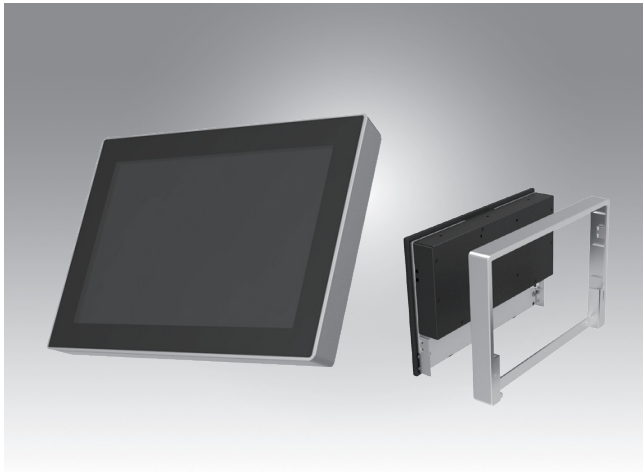


UTC-510 (PoE)

10.1" Ubiquitous Touch Computer UTC-510D with Intel® Celeron® N2807 / J1900



Features

- Low Power & Fanless design
- Built-in Intel® Celeron® N2807 / J1900 (UTC-510D)
- Providing Natural Viewing Experience with 16:10 10.1" Display
- Landscape & Portrait screen mode support by different applications
- VESA 75 mm standard mounting holes for varied mounting demands
- Detachable plastic frame design for panel mount applications
- POE supported on Celeron N2807/J1900 platform



Introduction

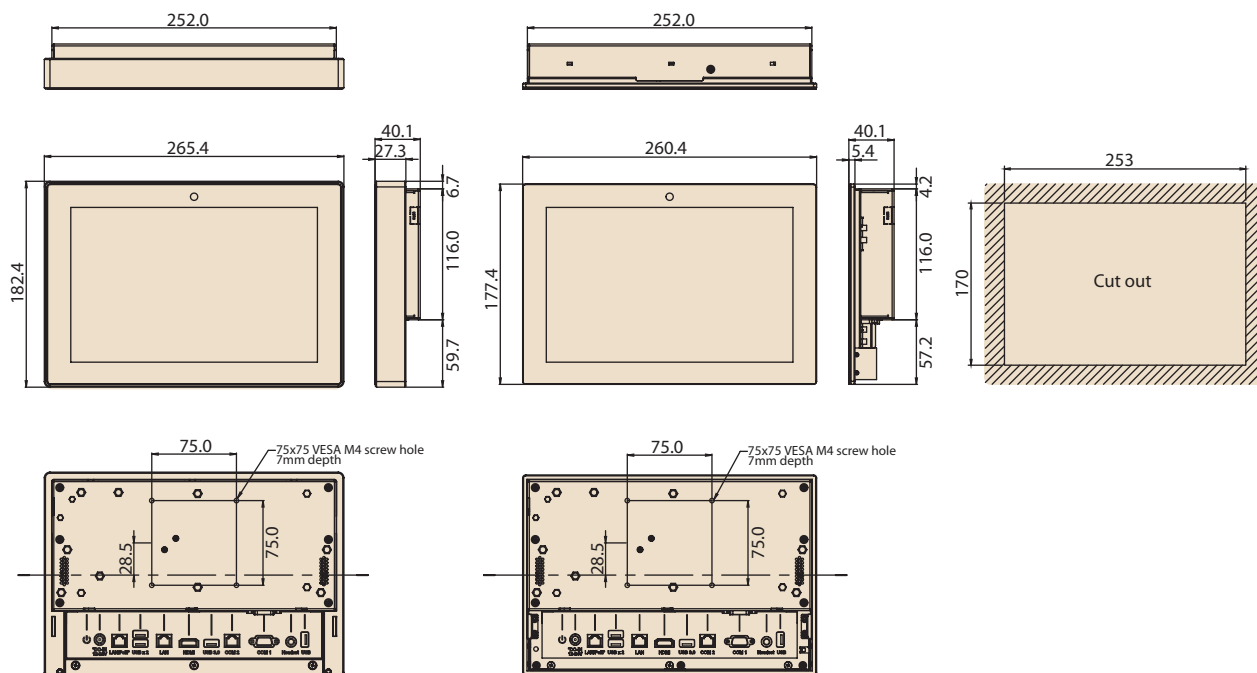
UTC-510 features an all-in-one computing system equipped with wide format, touch based LCD panel. It is easy to integrate key peripherals and display systems for diversified self-service and interactive signage deploy in different application areas. The systems deliver updated information with well-designed interactive interfaces, fully ensure relevant content and targeted promotions are delivered. UTC series touch panel computers are the best investments to enhance user satisfaction, further brand equity, and maximize business profits.

Specifications

		Intel® Celeron® N2807 (UTC-510DP)	Intel® Celeron® J1900 (UTC-510DP)
		Intel® Celeron® N2807 (UTC-510DP)	Intel® Celeron® J1900 (UTC-510DP)
Processor System	CPU	1.58 GHz (Dual-Core)	2 GHz (Quad-Core)
	Base Frequency	L2 Cache 1MB	L2 Cache 2MB
	Cache	1 x 204 pin SO-DIMM DDR3L 1333 MHz up to 8 GB	1 x 204 pin SO-DIMM DDR3L 1333 MHz up to 8 GB
	Memory	1 x 2.5 internal SATA HDD bay	
	HDD	2 x Gigabit Ethernet ports (Supports Wake on LAN)	
	Network (LAN)	2 x RS-232 COM (COM2 RS-422/485 supported)*	
	I/O ports	3 x USB 2.0, 1 x USB 3.0	
		1 x VGA (@1920 x 1200)	
		2 x Gigabit Ethernet ports (1 with POE)	
		Headphone with MIC x1	
OS Support	Stereo Speaker	2 W x 2	
	Bus expansion	1 Full size MiniPCIe/mSATA	
Environmental Specifications	Mounting	1 Half size MiniPCIe	
	Dimensions (W x H x D)	VESA 75 x 75 mm	
	Weight	265.40 x 182.40 x 39.55 mm	
		1.80 kg (3.97 lbs)	
		WES7P 64bit	
Power Supply	Operating Temperature	Windows Pro Embedded 7 64bit	
	Relative Humidity	Windows POSReady7 32bit	
LCD Display	Vibration	Win 10 IoT Enterprise 64bit	
	Shock	Linux Ubuntu 14.04	
Touch Screen Option (PE/GE)	Certification	Android 6.0	
	POE	0 ~ 40° C (32 ~ 104° F)	
	Power consumption	10 ~ 95% @ 40° C non-condensing	
		1G*	
		5G peak acceleration (11 msec. duration)	
		CE (No RED certification), FCC, CB, UL, CCC, BSMI	
		IEEE 802.3at/30W	
		Typical 10W	
		Max. 20W	
	Size/Type	10.1" TFT LCD with LED backlight	
	Max. Resolution	1280 x 800	
	Max. Color	16.7M	
	Pixel Pitch (um)	169.5 x 169.5	
	Brightness (cd/m²)	350	
	View Angle	170 / 170	
	Camera	5 Mega Pixel (Optional)	
	Type	Projected Capacitive. Glass Panel	
	Light Transmission	80% ± 5% / 90%	
	Controller	USB Interface / -	

Dimensions

Unit: mm



Ordering Information

Part No.	Description
UTC-510DP-APB0E	10.1" Intel Celeron N2807 Based fanless UTC with PCT.T/S 4GB RAM, PoE
UTC-510DP-APB1E	10.1" Intel Celeron J1900 Based fanless UTC with PCT.T/S 4GB RAM, PoE
1700001524	Power Cord 3P UL 10A 125V 180cm
170203180A	Power Cord 3P UK 2.5A/3A 250V 1.83M
170203183C	POWER Cord 3P Europe (WS-010+WS-083)183cm
1700021374-01	Power Cord 3P CCC 2.5A 250V 250cm (IEC60320-C5)
1960073820N001	IO Cover UTC-510
1931031500	Screws for IO Cover UTC-510(*2)

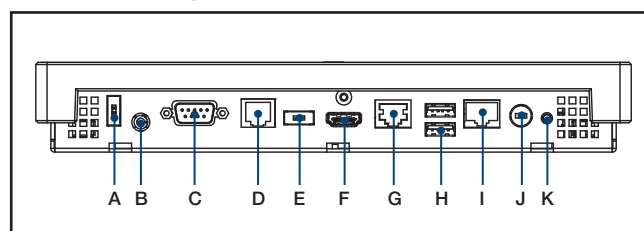
Peripherals for UTC-510 series

Part No.	Description
UTC-510P-B03E	2D Barcode Scanner - Honeywell N3680 For UTC-510 (USB connection)
UTC-510P-F01E	Finger Print Reader For UTC-510 (USB connection)
UTC-510P-R01E	RFID Reader For UTC-510 (USB connection)
UTC-510P-M01E	Magnet Strip Reader For UTC-510 (USB connection)
UTC-510P-S01E	Smart Card Reader For UTC-510 (USB connection)

Installation Accessory

Part No.	Description
UTC-WALL-MOUNT1E	Wall Mount kit for UTC-520/515/510
UTC-WALL-MOUNT4E	UTC-510 VESA mount (75 x 75)
UTC-S03-STANDE	UTC 75*75 mm Desktop Stand
UTC-510-STAND0E	UTC-510 desktop stand
1960086099N000	UTC-510 (PoE) Panel Mount Clamper (*4)
1930005598	UTC-510 Panel Mount Screw (*4)

Fully- Integrated I/O



- A. USB 2.0* (DC version only)
- B. Headset
- C. COM1
- D. COM2
- E. USB 3.0* (DC version only)
- F. HDMI
- G. LAN Ports
- H. USB 2.0 x 2
- I. LAN/PoE Ports
- J. DC Power jack (DC version only)
- K. Power switch

* UTC-510 (PoE) – A PoE Powered Device (PD) is a device powered by a PSE and thus consumes energy.

Please do take a Power sourcing equipment (PSE) which follows IEEE 802.3at PoE standard, also known as PoE+ or PoE plus, provides up to 30W of DC power output. Only 25.5 W input is assured to be available at the powered device as some power dissipates in the cable.

For Standard UTC-510 PoE Version, 1 x USB 2.0 (A port) and 1 x USB 3.0 (E port) are not suggested to use.

The customer can change the configuration only when total power input is under 25.5 W.

WIFI ordering information for UTC-510(PoE) series

Part No.	Description
UTC-510PW-A0E	UTC-51(PoE) WIFI KIT, DNXA-116, 2Tx/2Rx, Antennas
UTC-510PW-A1E	UTC-510(PoE) WIFI KIT, DNXA-92, 2Tx/2Rx, BT 4.0 Antennas
UTC-510PW-A2E	UTC-510(PoE) WIFI KIT, DNXA-222, BT, 2Tx/2Rx, BT 4.2, Antennas