



SCANMATIC

2D Barcode Scanner

SCANMATIC SM420 is the 2D professional barcode scanners designed to offer the best of the experience to user, in terms of speed, simplicity of use and mistakes absence. SCANMATIC readers have a modern design with a rugged housing, IP42 protection and they guarantee unique performances. Thanks to the optional stand it is possible to use the reader hands-free. In addition to sustain the scanner, the stand permits to activate "intelligent activation" function thanks to which it is possible the barcodes automatic scan, when presented in front of the reader. SCANMATIC guarantees an exceptional operation speed not having to orient the code for reading.

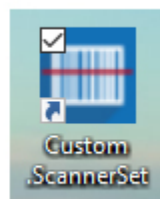
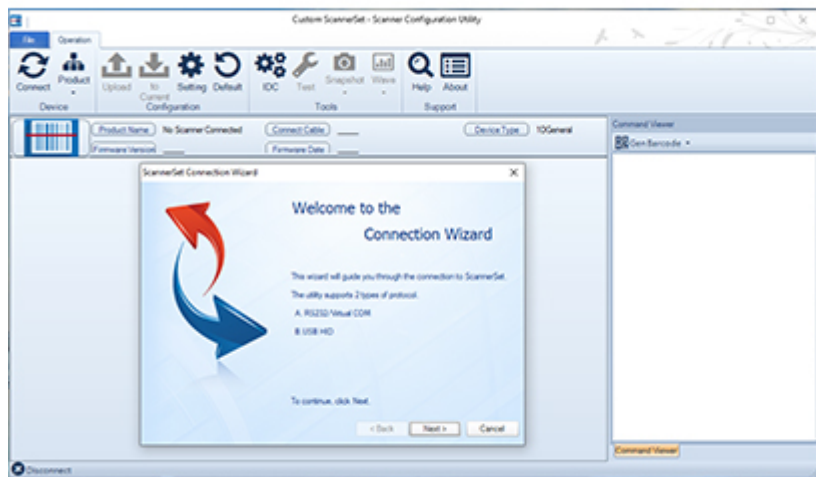
**Kreski**

Zapraszamy do kontaktu!
Więcej informacji: www.kreski.pl

CHARACTERISTICS

- Easy installation thanks to pre-setting
- Great reading performance on labels and in environments with poor light
- IP42 protection
- Optional stand to ease the hands-free reading
- Automatic detection with the "intelligent activation"

SOFTWARE:



Custom **ScannerSet**:
configuration software for
SCANMATIC range
scanners (programmable
through cable)

ACCESSORIES

- Stand

What is in the box:

- Device + serial cable, quick guide, power supply 5V, USB cable, USB power cable length 120cm, RJ45/DB9 cable converter length 25cm

Kreski

Zapraszamy do kontaktu!
Więcej informacji: www.kreski.pl

TECHNICAL SHEET

	2D
	SM420
Interfaces	USB/ RS232
Supported Barcodes	1D: UPC-A, UPC-E, EAN-8 / JAN-8, EAN-13 / JAN-13, Code 39, Code 128, Interleaved 25, Industrial 25, Matrix 25, Codabar / NW7, Code 93, China Posta, MSI / Plessey, Telepen, GS1 Databar Omni-direzionale, GS1 Databar Limited, GS1 Databar Expanded Opzione: Aztec, Micro PDF 417, Micro QR Code, Han Xin Code, GM Code 2D: Data Matrix, PDF 417, QR Code Option: Aztec, Micro PDF 417, Micro QR Code, Han Xin Code, GM Code

OPTICAL

Optical sensor	CMOS sensor
Light	LED white leg
Resolution	3 mil / 0.076mm @ PCS90% Code39 8mil / 0.2mm @ PCS90% QRCode
Scan Speed	60 fps (at full resolution)
Sealing	IP42 water and dust resistance
Indicator	-
Print Contrast	PCS30% @ 5mil / 0.127mm
Reading Distance	250mm @ 20mil / 0.5mm, PCS90%

OTHER DATA

Power Consumption	110 mA
Power Supply	+5V RS232 - USB +5V
Operating Temperature	0°C to 50°C (32°F to 122°F)
Drop Resistance	180 cm
Materials	ABS / Rubber
Dimensions	73.50 mm (W) x 173 mm (L) x 76.2 mm (H)
MTBF	50.000 hours

MODELS



Zapraszamy do kontaktu!
Więcej informacji: www.kreski.pl

**995ED030300233**SCANMATIC SCANNER BARCODE
2D SM420

CUSTOM S.P.A. - Via Berettine, 2 - 43010 Fontevivo PR - VAT: IT02498250345 - TEL: +39 0521 680111 - FAX: +39 0521 610701 - UNIQUE CODE: TI80WI0

The technical data on this website are not binding and may be changed without advanced notice.
Last update: 09 June 2021



Zapraszamy do kontaktu!
Więcej informacji: www.kreski.pl