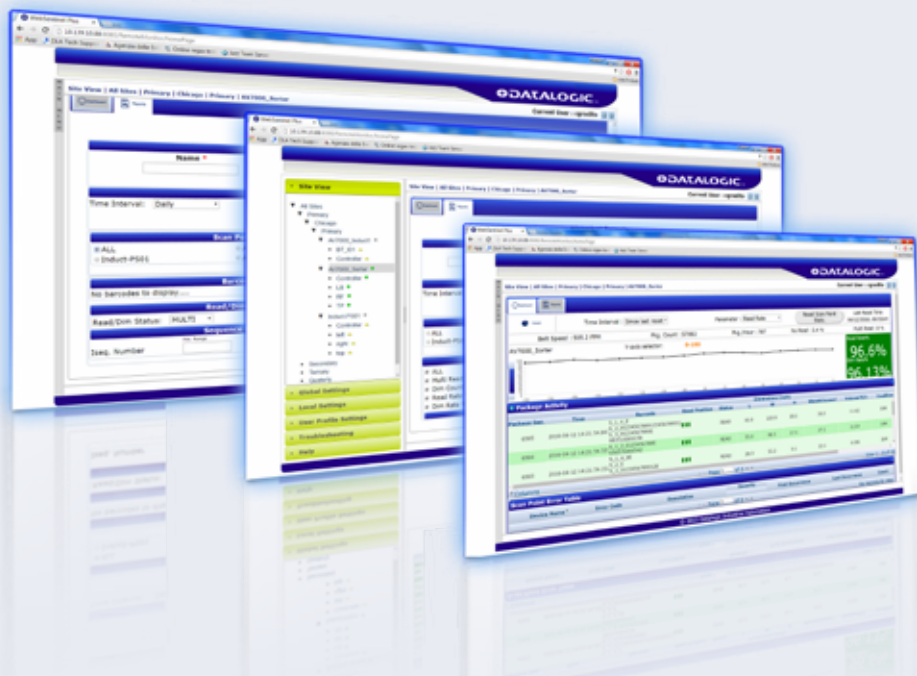


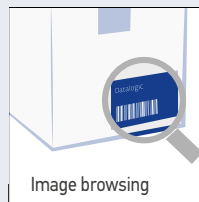
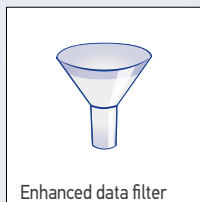
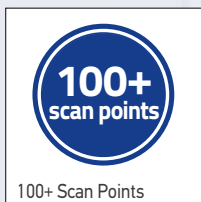
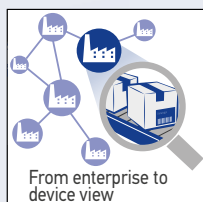
WEBSENTINEL PLUS



WebSentinel Plus is a very advanced monitor and information collector. It offers key features, benefits, and insights to end-users and System Integrators specializing in Factory Automation and Transportation and Logistics.

WebSentinel Plus is a supervisory software solution for monitoring operational activities of reading devices through a single web browser-based interface. It collects data from scan points through an Ethernet TCP/IP network, and presents the information flow as visual onscreen information. It also stores this information in a database and, periodically or on demand, produces performance, diagnostic, and tracking reports.

WebSentinel Plus provides visibility to enterprise controlled automated systems from a high level view of the facilities performance down to a detailed view of any specific device.



HIGHLIGHTS

- Real-Time Performance at a glance
- Front page that shows real-time reading performance, package activity and device diagnostics in foreground
- Complete control from enterprise to device
- Quickly 'drill-down' from enterprise to facility to scan point to device level views
- Database searches to get data from the last 90 days, and the ability to save the report
- Image file browsing for Datalogic Automation imagers
- Configurable alarm & event notification via email
- Risk mitigation profiling
- Individual user accounts with configurable roles and privileges
- Web-based client
- Cross platform server application (Windows and Linux OS)

TARGET MARKETS AND APPLICATIONS

- Transportation and Logistics (Postal and couriers)
- Distribution & Retail (Large distribution centers, Multimedia sorting)
- Airport Baggage Handling
- Automatic Warehousing Management
- Tracking and Traceability for tire manufactures
- Factory automation work in progress traceability

BENEFITS

- Evidence that systems work as expected
- Reduced reaction time to device faults
- Predict system failure to reduce downtime
- Full view of the activities at enterprise and facility level
- Effective and precise review of processes
- Performance increase by trends analysis and root cause analysis
- Expedite response time to unwanted conditions
- No software installation required and no need to buy new hardware
- No in house expertise needed

REPORTING

- Reading statistics
- Barcode tracking at both enterprise and facility levels
- Package search based on several attributes like no-reads/ multi-reads, dim/no dim, unexpected size, parcel gap, date and time, or shift
- Event information
- Reading charts

TECHNICAL DATA

Software Requirements	Operating System: Windows 7 - 10 (32 Or 64-Bit, 64-Bit Preferred), Linux on Datalogic Hw or on Request. Web Browsers: Internet Explorer 10 (Or Later), Chrome 36 (Or Later), Firefox 30 (Or Later) Java: Version 7 (Or Later)
Server Hardware Recommendations	Dedicated Computer With The Following: <ul style="list-style-type: none"> ▪ Intel Core I3, 2.1 Ghz Or Equivalent Processor ▪ 8 Gb Ram ▪ 500 Gb Hard Disk With At Least 350 Gb Free Space For Package Data ▪ Two 10/100/1000Mb Ethernet Port ▪ Usb 2.0 Port For Software Installation

MODELS

PART NUMBER	MODEL
PART NUMBER	STANDARD LICENSE
93A101021	WEBSENTINEL PLUS LICENSE 5 ARRAYS
93A101022	WEBSENTINEL PLUS LICENSE 10 ARRAYS
93A101023	WEBSENTINEL PLUS LICENSE 20 ARRAYS
93A101024	WEBSENTINEL PLUS LICENSE 32 ARRAYS
93A101025	WEBSENTINEL PLUS LICENSE 64 ARRAYS
93A101026	WEBSENTINEL PLUS LICENSE 128 ARRAYS
PART NUMBER	IMAGE BROWSING LICENSE
93A101027	WEBSENTINEL PLUS LICENSE IMAGES 5 ARRAYS
93A101028	WEBSENTINEL PLUS LICENSE IMAGES 10 ARRAY
93A101029	WEBSENTINEL PLUS LICENSE IMAGES 20 ARRAY
93A101030	WEBSENTINEL PLUS LICENSE IMAGES 32 ARRAY
93A101031	WEBSENTINEL PLUS LICENSE IMAGES 64 ARRAY
PART NUMBER	HARDWARE (OPTION)
93A101032	WEBSENTINEL PLUS SERVER
PART NUMBER	ACCESSORIES
93ACC0126	KIT, MONITOR/KEYBRD/BRKT/USB HUB
93ACC0108	CBL,EXT,10FT,USB MOUSE/KEYBOARD
93ACC0115	ENC-3610 ENCLOSURE DIM CONTROLLER
1000068706	CABLE,NETWORK,2M,CAT6,DOUBLE-SHIELDED,BLUE,ROHS EU
1000068369	CABLE,NETWORK,5M,CAT6,DOUBLE-SHIELDED,BLUE,ROHS EU
1000068707	CABLE,NETWORK,10M,CAT6,DOUBLE-SHIELDED,BLUE,ROHS EU