



Zapraszamy do kontaktu!
Więcej informacji: www.kreski.pl

- / Mobile POS Systems
- / Medical Tablets
- / Industrial Tablets
- / Rugged Tablets
- / Customization Services
- / Software Offerings

Industrial Tablet Solutions

Technologies Shaping the Future of Business










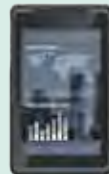

ADVANTECH

Enabling an Intelligent Planet

DeviceOn/iService

www.advantech.com



<div><p>Healthcare P.7</p></div>	<div><p>MIT-W102 P.26</p></div>	<div><p>Transportation P.9</p></div>	<div><p>AIM-68 P.21</p></div>	<div><p>Logistics & Warehousing P.11</p></div>	<div><p>Manufacturing P.13</p></div>
<div><p>AIM-78H P.25</p></div>	<div><div><p>Software Offerings P.27</p></div><div><p>Customization Services P.29</p></div><div><p>Public Safety P.15</p></div><div><p>Field Services P.17</p></div><div><p>Success Cases P.31</p></div><div><p>Mobile Computing</p><p>Advancements in mobile technology are transforming field service operations. Mobile computing devices provide real-time data access, enabling field workers to make informed decisions on the spot. This streamlines workflows and improves efficiency to ultimately optimize quality and increase productivity.</p></div></div>				<div><p>AIM-78S P.21</p></div>
<div><p>AIM-58 P.25</p></div>					<div><p>PWS-872 P.22</p></div>
<div><p>AIM-75H P.23</p></div>					<div><p>Field Services P.17</p></div>
<div><p>AIM-55 P.23</p></div>					
<div><p>Restaurant P.5</p></div>	<div><p>P.22</p><p>AIM-37</p></div>	<div><p>P.19</p><p>AIM-75S</p></div>	<div><p>P.19</p><p>AIM-65</p></div>	<div><p>Public Spaces P.3</p></div>	<div></div>



Public Spaces

eMenus and Self-Service

eMenu boards and self-service terminals deliver orders directly to the back-end system. This minimizes staffing requirements and improves service speed and customer satisfaction.

2



AIM-78S / AIM-68 with wall mount



AIM-37 with wall mount

Ticket Checking System

Ticket validation systems enable rapid ticket checking, reducing customer wait times during peak hours.

3



AIM-75S / AIM-65 with hand strap and barcode scanner

Customer Survey System

Customer survey systems provide a simple means for collecting customer feedback in order to improve services and increase customer engagement and purchase intentions.

4



AIM-75S / AIM-65 with basic cradle

Video Guide System

AIM tablets are ideal for providing self-guided video tours at places of cultural interest. Visitors use the handheld device to follow a live map. Built-in communication technology allows the tablet to "recognize" upcoming attractions and automatically play the relevant video guide.

5



AIM-75S / AIM-65 with shoulder strap

Ticketing System

Ticketing systems allow tickets to be purchased and printed in advance, reducing queues and customer wait times. The data collected by the systems also provide business insights and enable better management of ticket availability.

6



AIM-37 with printer cradle



AIM-75S / AIM-65 with basic cradle and printer

Information System

Information systems display floor plans that help visitors navigate to the places they want to go.

1



AIM-78S / AIM-68 with wall mount

Program Reservation System

Online reservation system allows visitor to reserve tickets and book services at their own convenience to avoid a large crowds during peak times. Additionally, because these systems minimize the number of staff required, they also reduce overall personnel costs.

7



AIM-75S / AIM-65 with office docking station



AIM-37 with basic cradle

Product Offerings



AIM-37
10" multi-functional industrial-grade tablet



AIM-65
8" industrial-grade tablet with Windows OS



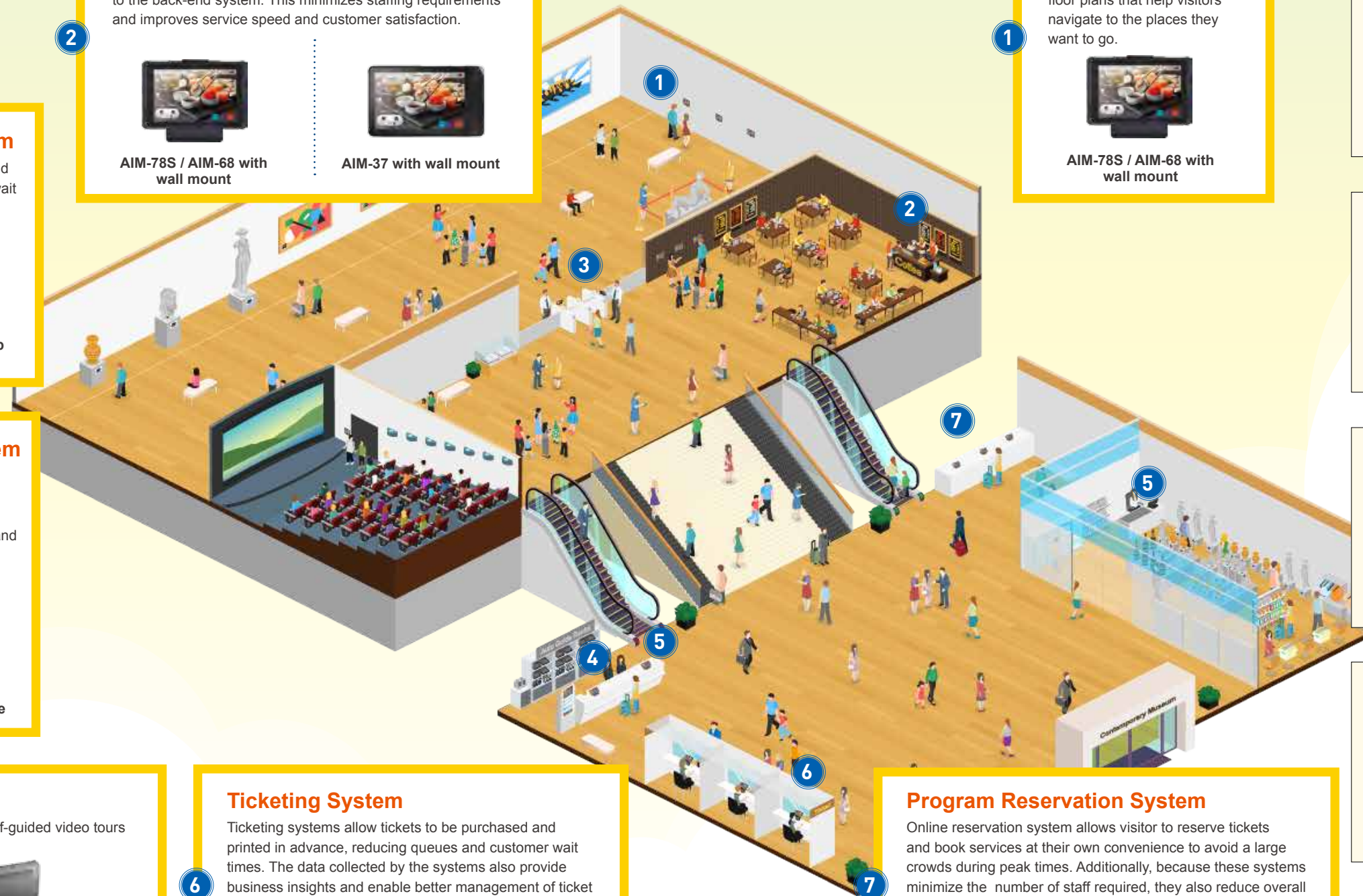
AIM-68
10" industrial-grade tablet with Windows OS



AIM-75S
8" industrial-grade tablet with Android 10 and GMS



AIM-78S
10" industrial-grade tablet with Android 10





Restaurant

Store Operations Management

All store information, including sales, inventory, and expense data, can be collected for analysis to optimize operations, improve customer satisfaction, and increase revenue.

1



AIM-75S / AIM-65 with hand strap



AIM-75S / AIM-65 with shoulder strap

eMenus and Self-Service

eMenu boards and self-service terminals deliver orders directly to the kitchen system. This minimizes staffing requirements and improves service speed and customer satisfaction.

2



AIM-75S / AIM-65 with wall mount



AIM-37 with wall mount

Mobile POS System

AIM tablets can be used as handheld point-of-sale (POS) devices. Intelligent POS solutions offer increased accuracy by eliminating manual data entry and improve productivity by optimizing checkout/payment processes.

3



AIM-37 with printer cradle



AIM-75S / AIM-65 with basic cradle and printer

Table Management System

Integrated with table and queue data, the table management system allows staff to call queue numbers via display signage and seat guests immediately. The system also provides a solution for monitoring table data, dining duration, availability, and waitlists.

4



AIM-75S / AIM-65 with basic cradle

Queuing Management System

Customers can join a queue and check status via an app. Restaurants can use the system to send customers SMS notifications regarding their queue number which reduces queueing in front of the store.

5



AIM-37 with printer cradle

Tablesides Ordering

Enables staff to take orders more accurately and efficiently, while encouraging the upselling of high-margin menu items and special deals using pop-up modifiers for suggestive selling.

6



AIM-75S / AIM-65 with hand strap

Product Offerings



AIM-37
10" multi-functional industrial-grade tablet



AIM-65
8" industrial-grade tablet with Windows OS



AIM-68
10" industrial-grade tablet with Windows OS



AIM-75S
8" industrial-grade tablet with Android 10 and GMS



AIM-78S
10" industrial-grade tablet with Android 10





Healthcare

Patient Data Collection and Retrieval

Patients' vital sign data are collected and stored in HIS to facilitate treatment prioritization, optimize clinical operations, and ensure timely high-quality patient care.

1



AIM-75H / AIM-55 with
barcode scanner



MIT-W102 with
VESA Dock

Product Offerings



AIM-55
8" medical-grade tablet with Windows OS



AIM-58
10" medical-grade tablet with Windows OS



AIM-75H
8" industrial-grade tablet with
Android 10 and GMS



AIM-78H
10" medical-grade tablet with Android 10



MIT-W102
10" medical-grade tablet with Windows OS

EHR and HIS Access

By enabling nurses to access medical records, hospital systems, and contact colleagues from patient bedsides, EHR and HIS access systems streamline complex workflows and increase productivity.

2



AIM-75H / AIM-55



AIM-58 with VESA Dock

Identity and Medication Verification

Verification solutions allow staff to confirm patient identity and medication prescription using a barcode scanner or IC card reader.

3



AIM-75H / AIM-55 with
barcode scanner



AIM-75H / AIM-55

Ambulance and Mobile Systems

Emergency care solutions for ambulance fleets facilitate mobile care and integrated treatment during transport.

4



AIM-55/ AIM-75H



AIM-78H

PACS and Video Capturing

PACS and video capture systems enable medical professionals to collect, monitor, and analyze patient data and facilitate information sharing for telehealth applications.

5



AIM-78H / AIM-58 with
VESA dock



MIT-W102 with
docking station





Transportation

2

Goods Delivery and Collection

RFID readers and barcode scanners can be used to check goods sent out for delivery or collection to ensure the right package gets to the right person at the right time.

AIM-75S / AIM-65 with hand strap

AIM-78S / AIM-68 with UHF RFID reader

1

Cargo Inspection and Shipping

Using barcode scanners for cargo inspection and shipping verification enhances data accuracy and allows real-time data updates to be sent to the terminal operating system for service quality control.

AIM-75S / AIM-65 with barcode scanner

PWS-872 with vehicle dock

3

Railway/Airport Maintenance Inspections

Lightweight, portable tablets travel easily, allowing engineering technicians to conduct maintenance and inspections.

AIM-75S / AIM-65 with barcode scanner and shoulder strap

4

Digital Package Signing

Electronic signatures and digital receipts accelerate package collection processes and help eliminate paper-based operation for improved records management and customer service.

AIM-75S / AIM-65 with shoulder strap

AIM-75S / AIM-65 with hand strap

AIM-75S / AIM-65 with stylus

5

Route Optimization and Navigation

Tablets mounted on in-vehicle docking stations can be used for route planning and navigation to optimize delivery routes for increased productivity and efficiency.

AIM-78S / AIM-68 with vehicle dock

AIM-75S / AIM-65 with vehicle dock

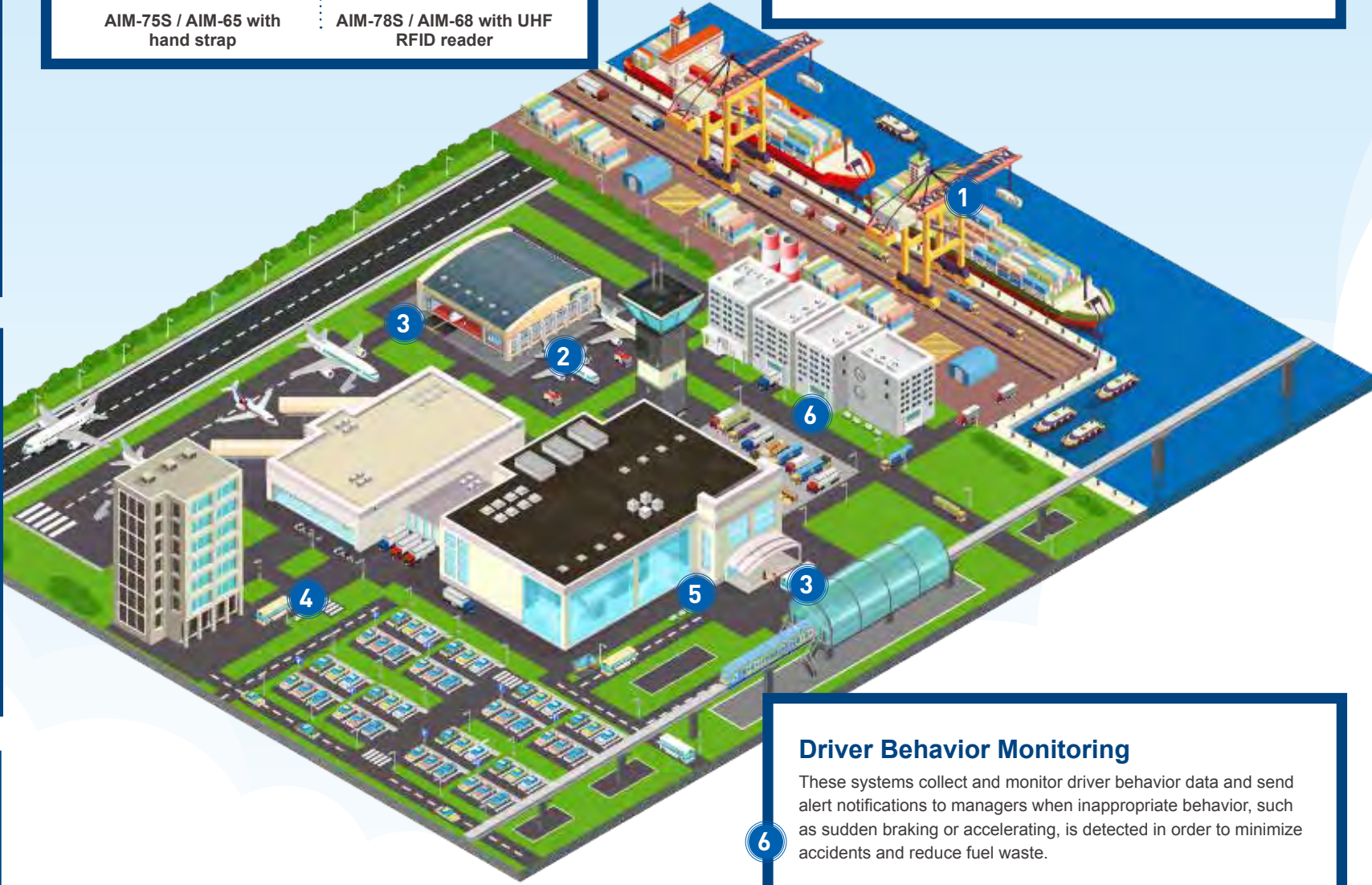
6

Driver Behavior Monitoring

These systems collect and monitor driver behavior data and send alert notifications to managers when inappropriate behavior, such as sudden braking or accelerating, is detected in order to minimize accidents and reduce fuel waste.

PWS-872 with vehicle dock

AIM-78S / AIM-68 with vehicle dock



Product Offerings

AIM-65
8" industrial-grade tablet with Windows OS

AIM-68
10" industrial-grade tablet with Windows OS

AIM-75S
8" industrial-grade tablet with Android 10 and GMS

AIM-78S
10" industrial-grade tablet with Android 10

PWS-872
10" rugged tablet with Windows OS



Logistics & Warehousing

Route Optimization and Navigation

Rugged tablets mounted on in-vehicle docking stations can be used for route planning and navigation to optimize delivery routes for increased productivity and efficiency.



AIM-75S / AIM-65 with holster



AIM-78S / AIM-68 with vehicle dock

Goods Receipt and Restocking

The use of tablets with a hand/shoulder strap and paired with a vehicle dock mounted in forklifts mobilize operations and facilitate the efficient receipt and restocking of goods.



AIM-75S / AIM-65 with barcode scanner



PWS-872 with vehicle dock

Picking & Packing

Using RFID readers and barcode scanners to scan goods and collect data optimizes picking and packing by accelerating locating and restocking, eliminating errors, and providing an audit trail for traceability.



AIM-75S / AIM-65 with shoulder strap



AIM-75S / AIM-65 with barcode scanner



AIM-75S / AIM-65 with multi-tablet charging station

Stock-Flow Reconciliation

Real-time inventory reports allow managers to analyze inventory turnover and proactively re-order and maintain inventory stocks.



AIM-78S / AIM-68



AIM-78S / AIM-68

Inventory Management

Barcode scanners and inventory systems with Wi-Fi connectivity enhance inventory management and allow managers to ensure goods are restocked in the correct aisle.



AIM-75S / AIM-65 with hand strap



AIM-78S / AIM-68 with UHF RFID reader

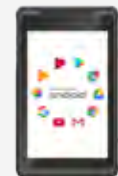
Product Offerings



AIM-65
8" industrial-grade tablet with Windows OS



AIM-68
10" industrial-grade tablet with Windows OS



AIM-75S
8" industrial-grade tablet with Android 10 and GMS



AIM-78S
10" industrial-grade tablet with Android 10



PWS-872
10" rugged tablet with Windows OS





Manufacturing

Streamline Manufacturing Processes

Tablets equipped with a tabletop dock can be used to streamline production processes, identify operational problems, and conduct on-site troubleshooting.

1



AIM-78S / AIM-68 with tabletop dock



AIM-75S / AIM-65 with VESA dock

Labor Management

Manage manufacturing processes, staff scheduling, and maintenance planning with paperless operations.

2



AIM-75S / AIM-65 with holster



AIM-78S / AIM-68 with hand strap

Quality Control & Tracking

Increase manufacturing accuracy with barcode scanner, RFID reader to improve traceability.

3



AIM-78S / AIM-68 with UHF RFID reader



AIM-78S / AIM-68 with camera

Overall Equipment Effectiveness

Optimize manufacturing operations using tablets equipped with hot-swappable batteries, fast-charging solutions, and application-oriented docking stations and modules.

4



AIM-78S / AIM-68 with multi-battery charging station



PWS-872 with vehicle dock

Material Control System

Raw materials and spare parts can be tracked using barcodes. Material control systems can be used to issue commands to storage and transport equipment to track materials throughout the production process.

5



AIM-75S / AIM-65 with barcode scanner



AIM-75S / AIM-65 with shoulder strap

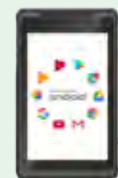
Product Offerings



AIM-65
8" industrial-grade tablet with Windows OS



AIM-68
10" industrial-grade tablet with Windows OS



AIM-75S
8" industrial-grade tablet with Android 10 and GMS



AIM-78S
10" industrial-grade tablet with Android 10



PWS-872
10" rugged tablet with Windows OS



Public Safety

Kreski

Product Offerings

Field Command Center

Offers real-time access to building codes for personnel tracking, access control, and device deployment and allows emergencies to be classified according to predefined levels.



AIM-78S / AIM-68 with multi-battery charging station



AIM-78S / AIM-68 with hand strap



AIM-75S / AIM-65 with shoulder strap

Preemptive Maintenance

Data and images of problems encountered can be uploaded to accelerate fault diagnosis and minimize system downtime. Event logs and repair records provide proof of servicing and can be used to conduct preemptive maintenance.



AIM-75S / AIM-65 with shoulder strap and stylus



AIM-78S / AIM-68 with camera



AIM-75S / AIM-65 with barcode scanner

Law Enforcement

Built-in 4G LTE and Wi-Fi technologies facilitate the collection, access, and sharing of police intelligence updates in real time.



AIM-75S / AIM-65 with holster



AIM-78S / AIM-68 with camera

Improved Situational Awareness

Delivers accurate GPS guidance, area schematics, hydrant locations, and overall mapping to improve situational awareness and enable a rapid response.



PWS-872 with vehicle dock



AIM-78S / AIM-68 with vehicle dock

Field Operations

Rugged solutions built to withstand vibration and extreme weather conditions, including rain, snow, sunshine, and dust, enable you to stay online in any environment.



PWS-872 with shoulder strap



AIM-75S / AIM-65 with hand strap



AIM-65
8" industrial-grade tablet with Windows OS



AIM-68
10" industrial-grade tablet with Windows OS



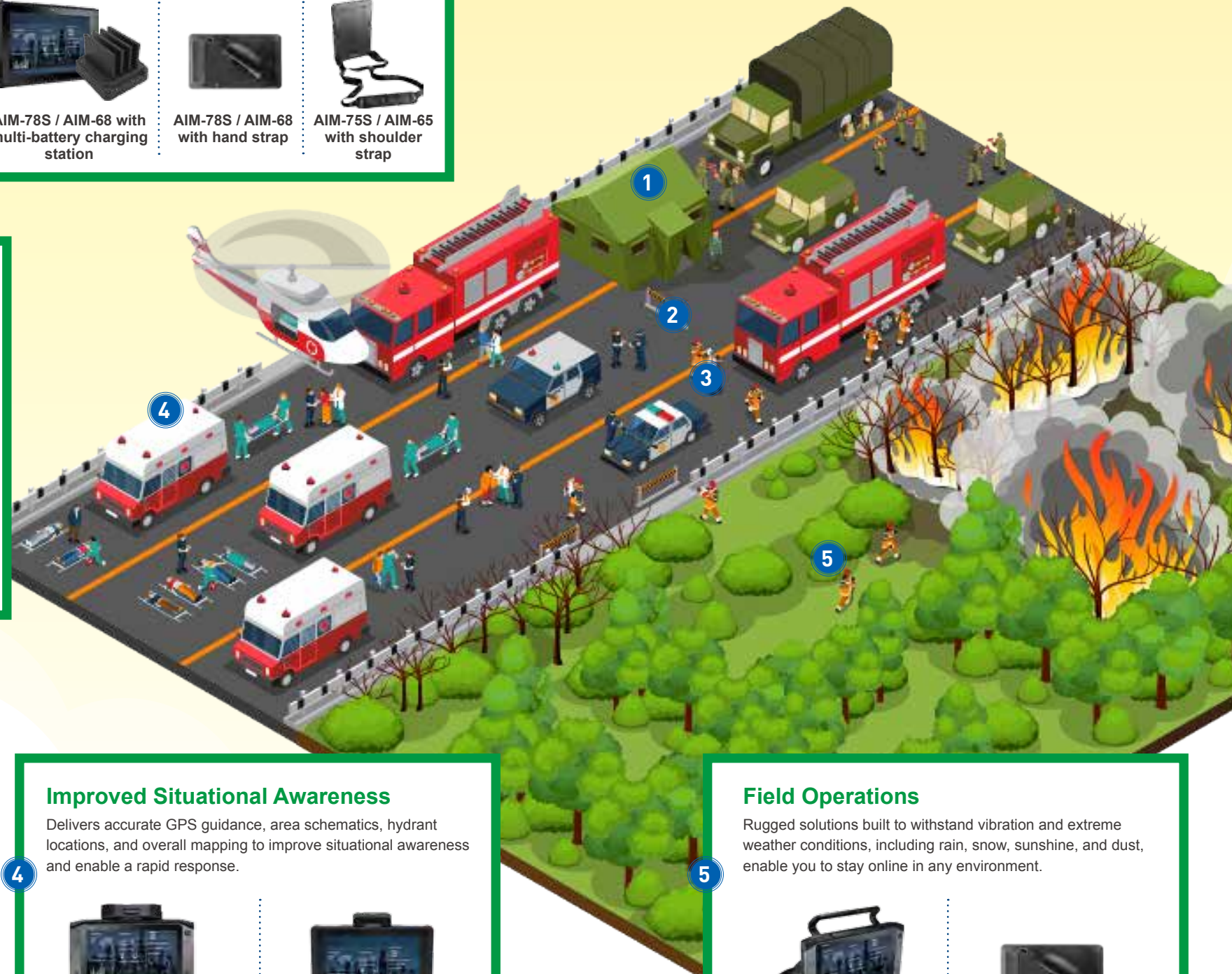
AIM-75S
8" industrial-grade tablet with Android 10 and GMS



AIM-78S
10" industrial-grade tablet with Android 10



PWS-872
10" rugged tablet with Windows OS



Field Services

1 Safety Audits and Compliance Reports

AIM tablets can be used to conduct safety and compliance inspections, record inspection results, and compile relevant reports for management.



AIM-78S / AIM-68



AIM-75S / AIM-65

2 On-Site Troubleshooting

For field service applications, users can upload data and images of problems encountered to accelerate fault diagnosis and minimize system downtime. Additionally, event logs and repair records provide proof of servicing and can be used to conduct preemptive maintenance.



AIM-75S / AIM-65 with shoulder strap



AIM-78S / AIM-68 with camera

3 Field Operations

AIM tablets feature a semi-rugged design that offers protection from water ingress, drop impacts, humidity, vibration, and high temperatures to ensure reliable operation.



PWS-872 with shoulder strap



AIM-78S / AIM-68 with hand strap

4 Asset Tracking

The barcode scanner and RFID reader enables easy asset tracking and management of raw materials and spare parts inventory for improved operations management.



AIM-75S / AIM-65 with barcode scanner



AIM-75S / AIM-65 with shoulder strap

6 Workforce Management

AIM tablets with 4G communication technology can be used for daily job tracking and workforce training to enhance overall performance.



AIM-75S patrol inspection with rugged case



AIM-78S / AIM-68 with hand strap

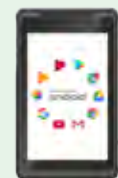
Product Offerings



AIM-65
8" industrial-grade tablet with Windows OS



AIM-68
10" industrial-grade tablet with Windows OS



AIM-75S
8" industrial-grade tablet with Android 10 and GMS



AIM-78S
10" industrial-grade tablet with Android 10



PWS-872
10" rugged tablet with Windows OS

5 In-Vehicle Control

Provides vehicle operators with a visual guidance system that allows them to input various job parameters, such as the dig depth and slope, in order to perform tasks more accurately and effectively.



PWS-872 with vehicle dock



AIM-78S / AIM-68 with vehicle dock

AIM-75S

8" industrial-grade tablet with Android 10 and GMS



- Built-in Qualcomm® Snapdragon™ 660 processor with Android 10 OS (GMS certified)
- IP65-rated protection from water and dust; 4-ft drop tolerance
- Supports various expansion peripherals for diverse applications
- Supports LTE, WLAN, Bluetooth, NFC, and GIS capabilities

AIM-65

8" industrial-grade tablet with Windows OS



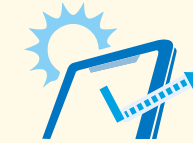
- Built-in Intel® Atom™ X5-Z8350 processor with dual OS (Windows and Android)
- IP65 rating for resistance to water and dust ingress, and 4ft. drop resistance
- Supports various expansion peripherals for diverse applications
- Supports real-time data transmissions via 4G LTE, Wi-Fi, and Bluetooth



Outdoor/Harsh Environments



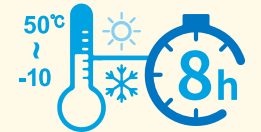
LTE/Wi-Fi connectivity for real-time data communication



Sunlight readable, anti-glare, anti-scratch display



IP65 rating with 4 ft. drop tolerance



Wide operating temperature and long-duration battery



Hands-Free Solutions



Wall mount dock

Shoulder strap

Hand strap

Rotatable hand strap

Vehicle dock

Desktop dock



Application-Oriented Peripherals



UHF RFID reader

RJ45 + COM module

20° barcode scanner

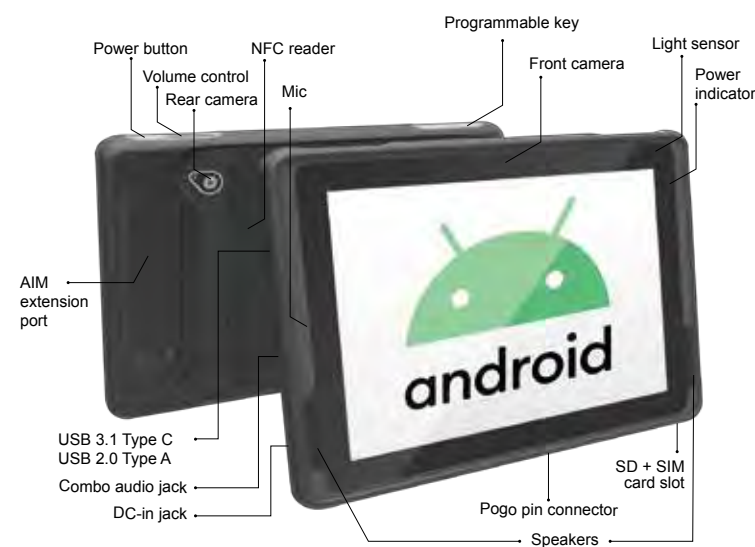
70° barcode scanner

Multi-tablet charging station

Multi-battery charging station

AIM-78S

10" industrial-grade tablet with Android 10



- Built-in Qualcomm® Snapdragon™ (SDA660/SDM660) processor with Android 10 OS
- 10" WUXGA full HD display with Corning® Gorilla® Glass
- Integrated barcode scanner for convenient data collection
- WLAN, Bluetooth, NFC, and 3G/4G LTE technology for seamless communication
- Optional extension include 1D/2D barcode scanner, LAN+COM module, UHF RFID module

AIM-37

10" multi-functional industrial-grade tablet



- Built-in Intel® Atom™ X5-Z8350 processor with dual OS (Windows and Android)
- 10.1" TFT IPS WXGA display with Corning® Gorilla® Glass
- IP54 rating for protection from water and dust ingress
- Embedded MSR, IC card reader, and NFC reader provide multiple input options

AIM-68

10" industrial-grade tablet with Windows OS



- Built-in Intel® Atom™ X7-Z8750 processor with dual OS (Windows 10 IoT and Android 6.0)
- Hot-swappable battery with capacity meter for reliable long-duration operation
- 10" WUXGA full HD display with Corning® Gorilla® Glass
- WLAN, Bluetooth, NFC, and 3G/4G LTE technology for seamless communication
- Optional extensions include a 1D/2D barcode scanner, LAN+COM module, and UHF RFID module

PWS-872

10" rugged tablet with Windows OS



- Built-in 7th gen Intel® Core™ i3/i5/i7/Celeron® processor with integrated Intel® Turbo Boost technology
- 10.1" high-brightness WXGA LED display with Corning® Gorilla® Glass 3 panel
- Rugged design with IP65 rating and MIL-STD-810G certification
- Optional peripherals include vehicle docking station, desktop docking station, and multiple extension modules

AIM-75H

8" medical-grade tablet with Android 10 and GMS



- 8" Full HD projected capacitive touchscreen with scratch-resistant Corning® Gorilla® Glass
- Built-in Qualcomm® Snapdragon™ 660 processor with Android 10 OS (GMS certified)
- Complies with IEC 60601-1 and EN 1789 medical standards

AIM-55

8" medical-grade tablet with Windows OS



- 8" Full HD projected capacitive touchscreen with scratch-resistant Corning® Gorilla® Glass
- Built-in Intel® Atom™ processor with dual OS (Windows 10 and Android 6.0)
- Complies with IEC 60601-1 and EN 1789 medical standards
- IP65-rated protection from water and dust ingress



Infection Control



Medical-Grade Quality and Reliability

- Mobile devices reduce time spent on administration tasks by up to 40%
- Tablets are IP65 rated for protection from dust and water ingress and 4-ft (120 cm) drop tested to ensure reliable operation
- Long-lasting battery supports long-hour operation



Hand strap



VESA dock

Drop Tolerance



Dust Resistance



IP65-Rated Protection



Antibacterial Enclosure



Application-Oriented Peripherals



20°/70° barcode scanner



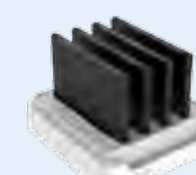
LAN + COM module



VESA dock/Stand



Desktop dock



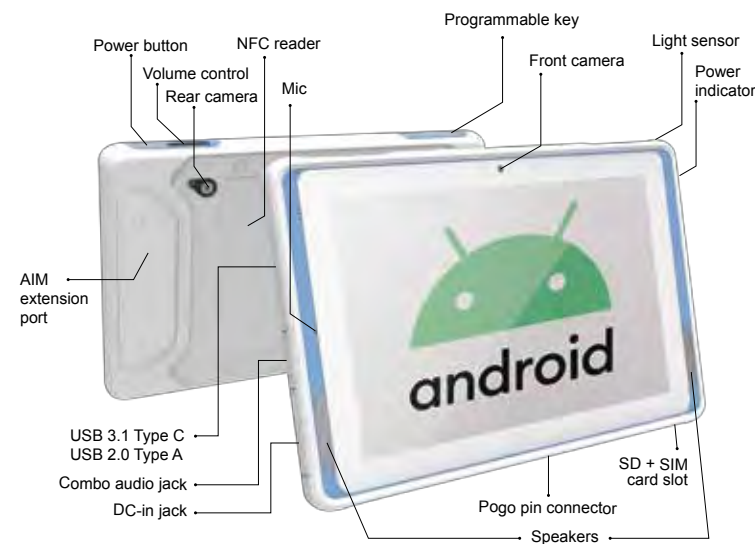
Multi-Battery charging station



Multi-Tablet charging station

AIM-78H

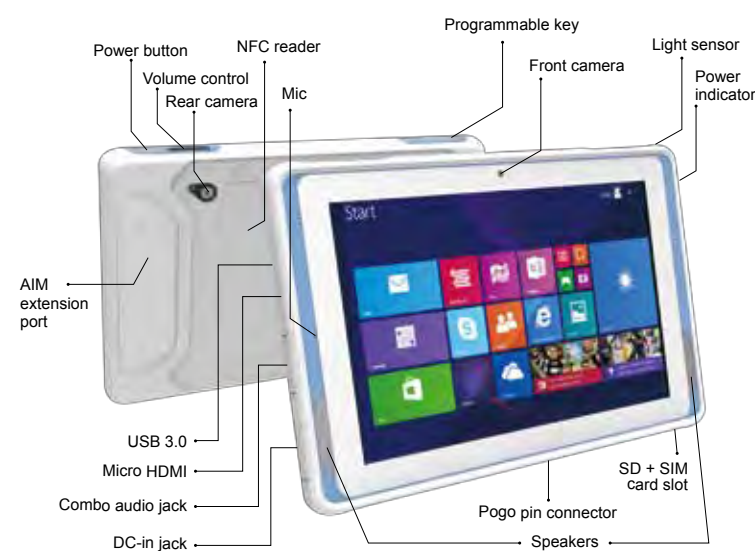
10" medical-grade tablet with Android 10



- 10" Full HD projected capacitive touchscreen with scratch-resistant Corning® Gorilla® Glass
- Built-in Qualcomm® Snapdragon™ (SDA660/SDM660) processor with Android 10
- Complies with IEC 60601-1 and EN 1789 medical standards

AIM-58

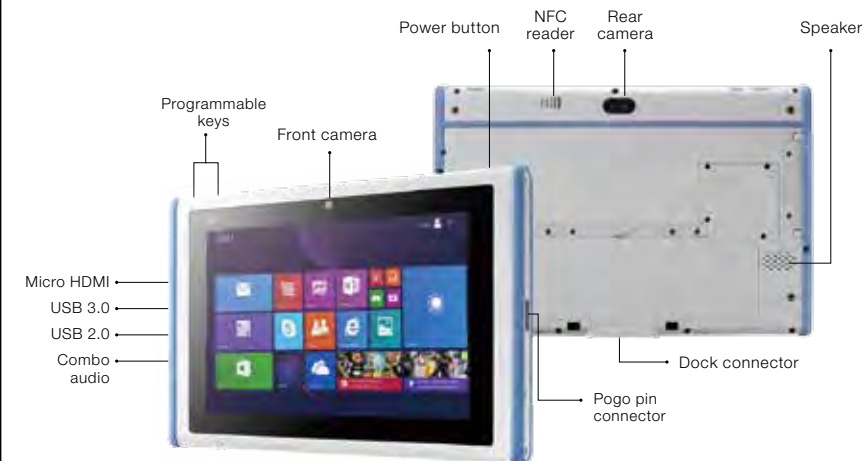
10" medical-grade tablet with Windows OS



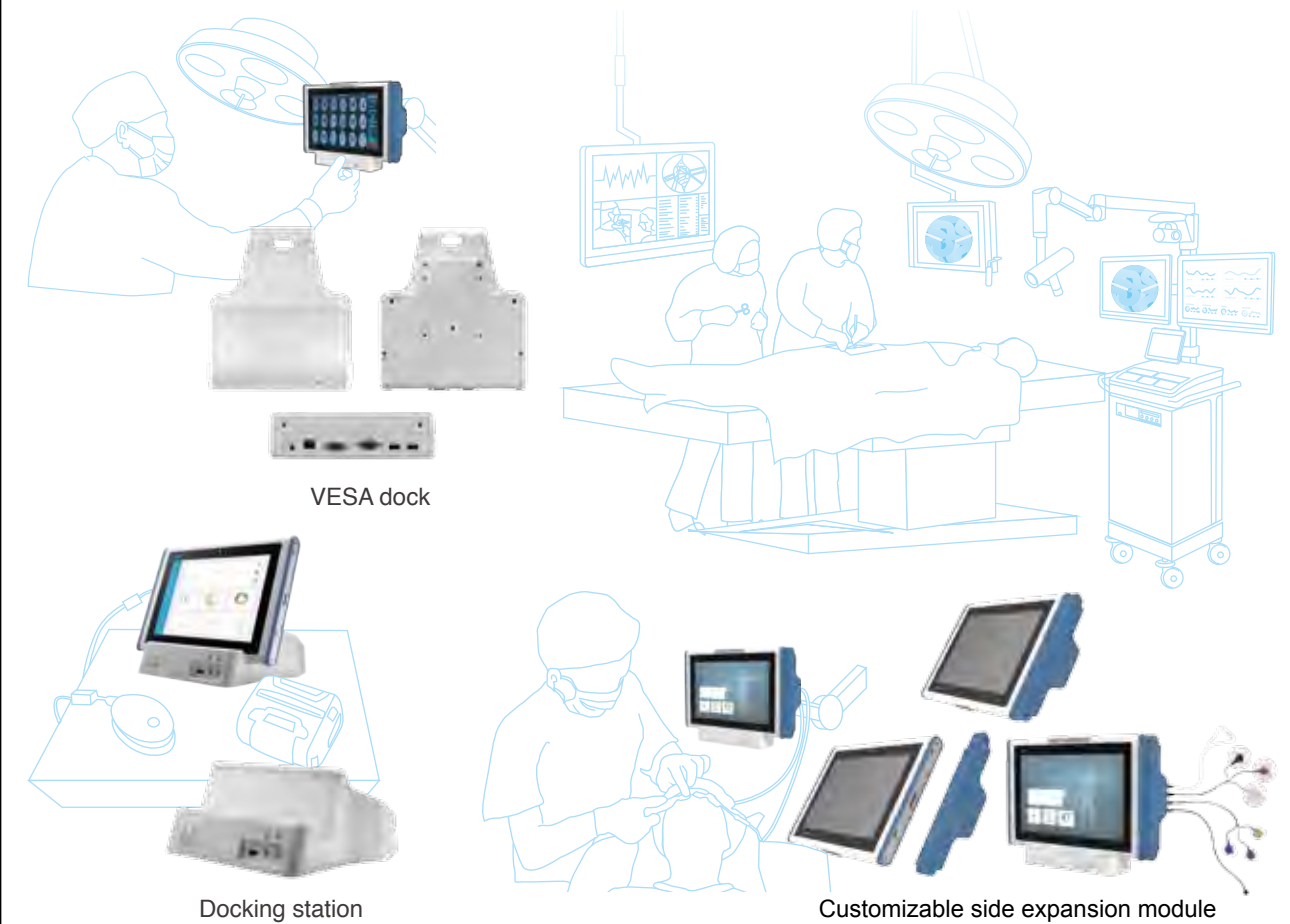
- 10" Full HD projected capacitive touchscreen with scratch-resistant Corning® Gorilla® Glass
- Built-in Intel® Atom™ processor with dual OS (Windows 10 and Android 6.0)
- WLAN, Bluetooth, NFC, and 4G LTE technologies for enhanced communication
- Hot-swappable battery for long-duration operation

MIT-W102

10" medical-grade tablet with Windows OS



- Intel® Pentium® N4200 quad-core processor
- Supports Windows 10 IoT and Linux Ubuntu OS
- Optional accessories include desktop dock, VESA dock, rubber bumper/hand strap, and 3-in-1 multi-functional stand
- Customizable expansion





Software Offerings

DeviceOn/iService

Intelligent Remote Device Management
Improves Operational Efficiency



Total Management



Devices & Hardware

- Windows, Linux, Android
- Hardware, storage, battery



Software & Peripherals

- Software monitoring & access
- Screens, USB devices, printers



Open for Expansion

- Peripheral integration
- Open APIs for integration

Remote Access



Real-Time Monitoring

- Connection, hardware status
- Software, peripheral status
- Failure notifications



Remote Controls

- Power controls
- Audio, backlight controls
- Software controls



Troubleshooting

- Screenshots
- Remote desktop support

Operational Efficiency



OTA Updates

- System, software updates
- File repository management
- App store



Batch Controls

- One-to-many batch reboot, uploads, etc.
- Time-saving tasks



Setup Booster

- Software, peripherals watchlist
- Roles, rule templates

Note: Some functions may vary according to the product



Manage AIM Tablets Remotely with DeviceOn/iService

Hardware

Status monitoring

Hardware status
Running

Remote controls
(depending on model)

Reboot **Terminal**
(Windows version)

Snapshot **Audio control**

Remote desktop

Software

Status monitoring

Software watchlist

Software status
Running

Remote controls

Start software

Stop software

OTA updates



Windows 10
LTSC, LTSC

Android 6/10

Peripherals



Status monitoring

Peripherals
• Connected/disconnected

Customized integration
• Third-party devices/peripherals
• Advanced functions



System Architecture



Edge Devices

Hardware Software Peripherals



DeviceOn Server

Cloud On-Premises



Clients

Status Controls



Free Installation
prebuilt into IoT products



Download Installer
from DeviceOn website



Download Installer
from DeviceOn website



Required Hardware

Windows 10 8GB RAM
Intel Core i5 125GB storage



Free Installation
via browser





Customization Service



Service Info



Mobile Design & Manufacturing Services

Creative, Customized, Collaborative

Leveraging our extensive technology design experience, we offer tailor-made tablet solutions optimized for different vertical markets.

Enterprise

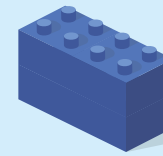
Enterprise tablets are designed with reliability, security, manageability, and cost considerations in mind. The Advantech Mobile DMS team offer comprehensive hardware and software solutions for retail, hospitality, gaming, and general commercial applications.

Medical

Advantech designs trusted medical-grade tablets for healthcare to facilitate patient monitoring, medical imaging, and telehealth applications. Each tablet is equipped with advanced mobile technology that enhances the delivery and quality of patient care.

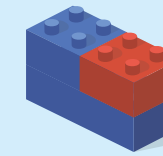
Utility

Rugged tablets that enable mobile computing are essential for the utility industry. The Advantech Mobile DMS team provides custom devices with innovative rugged technology to enable frontline workers to deliver professional public utilities, maintenance, and repair services.



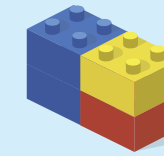
Commercial Off-the-Shelf (COTS) Products

Advantech's standard product offerings



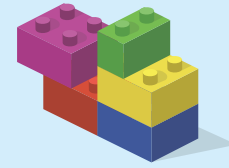
Customized COTS Products

Standard products with minor changes



Jointly Developed Products

Co-designed products based on converging innovations and technology roadmaps



Fully Customized Products

Custom products designed to satisfy specific usage requirements



Rugged Solutions

- Ingress protection from water/dust
- Functional in high and low temperatures
- Equipped with drop tolerance
- Built to withstand harsh environments



Wireless Connectivity

- Optimized for enhanced wireless communication
- Precise positioning and performance
- Secure mobile communication and fast roaming
- Carrier certification service



Ergonomic Industrial Designs

- In-house industrial design team
- Collaborative industrial design and mechanical engineering
- Human factor testing for field optimization
- Diverse domain expertise is leveraged



Power Management

- Wide range of power management solutions
- Optimized battery life and performance
- Extensive vehicle power design experience
- Tools for hardware and software monitoring



System Integration

- In-depth research of market needs
- Solutions aimed at system compatibility
- Understanding of domain regulations
- Comprehensive integration experience



Software Services

- OS, BSP, API, and SDK customization
- Dashboard, utility, and test programming upon request
- Software qualification plan
- Advantech WISE-DeviceOn solution-ready



AIM-35 Industrial-Grade Tablet Deployed for Tableside Ordering Applications

A popular Thai restaurant chain in Taiwan

Prompt, efficient, and high-quality customer service is essential to establishing a successful restaurant. Advantech is committed to helping business owners increase operational efficiency while improving staff and customer satisfaction. For this project, a well-known Thai restaurant chain with more than 138 restaurants throughout Taiwan implemented Advantech's AIM-35 tablet to enhance the overall service. Because of the chain's increasing popularity, customers were facing long queues for ordering and payment. In an effort to improve the service quality, the restaurant adopted Advantech's AIM-35 tablet to enable tableside ordering. This solution not only reduced customer wait times by streamlining the ordering and payment processes, but also improved operational efficiency for increased profitability.



Advantech's MSR Module Enables Mobile Verification for Enhanced Security

A leading hotel and resorts group with sites in Japan, Philippines, Singapore, and Hong Kong

To offer customers a personalized experience, hotels are turning to new methods and technologies to gain a competitive edge. Advantech is committed to helping business owners increase operational efficiency and maintain security during data transfers. For this project, a well-known hotel and resorts group with more than 6,110 properties in 120 countries adopted Advantech's mobile tablet and MSR module to enhance their overall service, security, and customer satisfaction. In an effort to simplify hotel operations and improve the service quality, the hotel deployed Advantech's AIM-35 and AIM-37 tablets to enable poolside and front desk ordering. This solution not only reduced customer wait times by streamlining the ordering and payment processes, but also improved operational efficiency for increased profitability.



AIM-65 Tablet Integrated with an ERP System for Enhanced Warehouse Management

A global cosmetics manufacturer warehouse in Thailand

Mobile warehouse management solutions have become increasingly important in recent years because of their ability to streamline workflows and reduce the incidence of human error. Accordingly, the owner of warehouse in Thailand adopted Advantech's industrial-grade AIM-65 tablets in an effort to increase operational efficiency and productivity. In addition to improving the goods receiving, inspection, packing, and loading processes, the AIM-65 tablets can be equipped with diverse peripherals, such as a barcode scanner, RFID reader, and/or SIM card module. These peripherals expand the system functions and allow employees to easily perform complex warehouse and inventory tasks in a wide range of industrial environments. After integration with existing infrastructure, AIM-65 tablets can also serve as portable ERP systems or edge computing devices that facilitate optimized warehouse management.



Waste Collection Trucks in Portugal Fitted with AIM-65 Tablets and Vehicle Docks

Waste collection trucks in Portugal

To optimize waste collection management, a well-known software and IoT solutions provider based in Portugal adopted Advantech's AIM-65 tablet to serve as a navigation system in waste collection trucks. The provision of LTE and GPS connectivity allows drivers to identify locations for waste collection and to generate an optimized route that saves time and fuel costs. Additionally, the AIM-65 tablet transmits real-time vehicle information to the centralized control center for monitoring and fleet management. This allows administrators to see whether the truck has available space, or whether additional trucks should be dispatched to complete collections. Overall, AIM-65 optimizes operations by improving efficiency and comprehensive management.

▶ AIM-S & R Tablet Specifications



Model		AIM-37	AIM-65	AIM-68	AIM-75S	AIM-78S	PWS-872
System	Processor	Intel® Atom™ x5-Z8350 Processor (1.92GHz)	Intel® Atom™ x5-Z8350 quad-core, 1.6 GHz (1.44 GHz)	Intel® Atom™ x7-Z8750 quad-core, 1.6 GHz (2M cache, up to 2.56 GHz)	Qualcomm® Snapdragon™ 660 Octa-core 2.2 GHz	Qualcomm® Snapdragon™ 660 octa-core 2.2 GHz	Intel® Celeron® 3965U, 2.2 GHz Intel® Core™ 7th i3-7100U/i5-7300U/i7-7600U, upto 2.8Ghz(*)
	Memory	4GB DDR3	2/4GB DDR3	4GB DDR3	4GB DDR4	4GB DDR4	4GB DDR4
	OS	Windows 10 IoT Enterprise, Android 6.0	Windows 10 IoT Enterprise, Android 6.0	Windows 10 IoT Enterprise, Android 6.0	Android 10 with GMS certification	Android 10	Windows 10 IoT, 64 bit
Storage		eMMC/micro SD	eMMC/micro SD	eMMC/micro SD	eMMC/micro SD	eMMC/micro SD	mSATA SSD/SD
Display	Type	10.1" IPS LCD	8" IPS LCD	10.1" FHD LCD	8" IPS LCD	10.1" FHD LCD	10.1" WXGA LCD
	Resolution	WXGA 1280 x 800	WUXGA 1920 x 1200	WUXGA 1920 x 1200	WUXGA 1920 x 1200	WUXGA 1920 x 1200	WXGA 1280 x 800
	Touch Type	10-point, multi-touch PCAP	10-point, multi-touch PCAP	10-point, multi-touch PCAP	10-point, multi-touch PCAP	10-point, multi-touch PCAP	10-point, multi-touch PCAP
Wireless Communication		WLAN, BT, NFC	WLAN, BT, NFC, WWAN (optional)	WLAN, BT, NFC, WWAN (optional)	WLAN, BT, NFC, WWAN (optional)	WLAN, BT, NFC, WWAN (optional)	WLAN, BT, NFC (optional), WWAN (optional)
Camera		Front: 2MP FF camera Rear: 5MP AF camera	Front: 2MP FF camera Rear: 5MP AF camera	Front: 2MP FF camera Rear: 5MP AF camera	Front: 5MP FF camera Rear: 8MP AF camera	Front: 8MP FF camera Rear: 13MP AF camera	Front: 2MP FF camera Rear: 8MP AF camera
Battery		3.8V, 30Whr, 7900mAh	3.8V, 18.6Whr, 4900mAh	10.8V, 26Whr, 2400mAh	3.8V, 18.6Whr, 4900mAh	10.8V, 26Whr, 2400mAh	Primary battery: 14.4V, 39.32Whr, 2730mAh Secondary battery: 14.4V, 62Whr, 4300mAh
I/O*		Standard I/O, dock I/O	Standard I/O, extended I/O, dock I/O	Standard I/O, extended I/O, dock I/O	Standard I/O, extended I/O, dock I/O	Standard I/O, extended I/O, dock I/O	Standard I/O, extended I/O, dock I/O
Environmental	Operating Temperature	0 ~ 50 °C/32 ~ 122 °F	-10 ~ 50 °C/14 ~ 122 °F				-20 ~ 50 °C/-4 ~ 122 °F
	Storage Temperature	-10 ~ 60 °C/ 14 ~ 140 °F	-20 ~ 60 °C/-4 ~ 140 °F				-40 ~ 60 °C / -40 ~ 140 °F
	IP Rating	IP54 (except the MSR/ IC card slot)	IP65				
	Drop Tolerance	Up to 75 cm (2.5 ft)	Up to 120 cm (4 ft)				

* See datasheet for detailed specifications

▶ AIM-H Tablet Specifications



Model		AIM-55	AIM-58	AIM-75H	AIM-78H	MIT-W102
System	Processor	Intel® Atom™ x5-Z8350 quad-core, 1.6 GHz (1.44 GHz)	Intel® Atom™ x7-Z8750 quad-core, 1.6 GHz (2M cache, up to 2.56 GHz)	Qualcomm® Snapdragon™ 660 octa-core, 2.2 GHz	Qualcomm® Snapdragon™ 660 octa-core, 2.2 GHz	Intel® Pentium®N4200, quad-core, 1.1 GHz (up to 2.5 GHz)
	Memory	4GB DDR3	4GB DDR3	4GB DDR4	4GB DDR4	4GB DDR4*
	OS	Windows 10 IoT Enterprise, Android 6.0	Windows 10 IoT Enterprise, Android 6.0	Android 10 with GMS certification	Android 10	Windows 10 IoT Enterprise, Linux
Storage		eMMC/micro SD	eMMC/micro SD	eMMC/micro SD	eMMC/micro SD	M.2 SSD
Display	Type	8" IPS LCD	10.1" FHD LCD	8" IPS LCD	10.1" FHD LCD	10.1" TFT LCD
	Resolution	WUXGA 1920 x 1200	WUXGA 1920 x 1200	WUXGA 1920 x 1200	WUXGA 1920 x 1200	WUXGA 1920 x 1200
	Touch Type	10-point, multi-touch PCAP	10-point, multi-touch PCAP	10-point, multi-touch PCAP	10-point, multi-touch PCAP	10-point, multi-touch PCAP
Wireless Communication		WLAN, BT, NFC	WLAN, BT, NFC, WWAN (optional)	WLAN, BT, NFC, WWAN (optional)	WLAN, BT, NFC, WWAN (optional)	WLAN, BT, NFC (optional)
Camera		Front: 2MP FF camera Rear: 5MP AF camera	Front: 2MP FF camera Rear: 5MP AF camera	Front: 5MP FF camera Rear: 8MP AF camera	Front: 8MP FF camera Rear: 13MP AF camera	Front: 2MP FF camera (optional) Rear: 5MP AF camera (optional)
Battery		3.8V, 18.6Whr, 4900mAh	10.8V, 26Whr, 2400mAh	3.8V, 18.6Whr, 4900mAh	10.8V, 26Whr, 2400mAh	11.1V, 31.75Whr, 2860mAh
I/O*		Standard I/O, extended I/O, dock I/O	Standard I/O, extended I/O, dock I/O	Standard I/O, extended I/O, dock I/O	Standard I/O, extended I/O, dock I/O	Standard I/O, extended I/O, dock I/O
Environmental	Operating Temperature	0 ~ 30 °C/32 ~ 86 °F	0 ~ 30 °C/32 ~ 86 °F	0 ~ 35 °C/32 ~ 95 °F		
	Storage Temperature	-20 ~ 60 °C/-4 ~ 140 °F				
	IP Rating	IP65				
	Drop Tolerance	up to 120 cm (4 ft)				up to 152.4 cm (5ft) onto plywood

* See datasheet for detailed specifications

▶ AIM Peripherals Specifications

VESA Dock



Applicable Model	AIM-37	AIM-65/75S	AIM-68/78S	AIM-55/75H	AIM-58/78H	MIT-W102
Part Number	AIM-P703	AIM-VSD0-0170 (full I/O) AIM-VSD0-0171 (charger & USB)	AIM-VSD0-0470 (full I/O) AIM-VSD0-0471 (charger & USB)	AIM-VSD0-0001 (full I/O) AIM-VSD0-0003 (charger & USB)	AIM-VSD0-1001 (full I/O) AIM-VSD0-1003 (charger & USB)	MIT-W102-ACCVD001E
Features	VESA (75x 75) standard mounting holes	VESA (75 x 75) standard mounting holes Full I/O: USB 3.0, RS-232, LAN, power jack Charger & USB: USB 2.0, power jack	VESA (75 x 75) standard mounting holes Full I/O: USB 3.0, RS-232, LAN, power jack Charger & USB: USB 2.0, power jack	VESA (75 x 75) standard mounting holes Full I/O: USB 3.0, RS-232, LAN, power jack Charger & USB: USB 2.0, power jack	VESA (75 x 75) standard mounting holes Full I/O: USB 3.0, RS-232, LAN, power jack Charger & USB: USB 2.0, power jack	VESA (75 x 75) standard mounting holes Full I/O: VGA, USB 2.0, RS-232, LAN, power jack

Vehicle Dock



Applicable Model	AIM-65/75S/75H	AIM-68/78S/78H	PWS-872
Part Number	AIM-VEH7-0000 (full I/O) AIM-VEH7-0010 (charger only)	AIM-VED0-0422 (full I/O) AIM-VED0-0423 (charger only)	PWS-870-VCRADLE00E PWS-870-VCRADLE01E PWS-870-VMOUNT00E
Features	Full I/O: CAN bus, DI, DO, odometer, USB 2.0, RS-232 + RS-485 (USB 2.0, power input), power jack Charger only: Power input	Full I/O: CAN bus, DI, DO, odometer, USB 2.0, RS-232 + RS-485 (USB 2.0, power input), power jack Charger only: Power input	LAN A8 (M12), GPS SMA, USB 3.0, HDC (RS-232, CAN 2.0, DI, DO, Line in, Line out), power input (M12)

Desk Dock



Applicable Model	AIM-37	AIM-75S	AIM-65/75S	AIM-68/78S
Part Number	AIM-P708A0 (single I/O) AIM-P708C0 (multiple I/O)	AIM-P508A0	AIM-OFD0-0170 (full I/O) AIM-OFD0-0171 (charger & USB)	AIM-OFD0-0480 (full I/O) AIM-OFD0-0481 (charger & USB)
Features	Single I/O: USB 2.0, micro USB Multiple I/O: USB 2.0, RS-232, LAN, power jack	I/O: USB 2.0, micro USB	Full I/O: USB 2.0, RS-232, HDMI, power jack, battery charging station Charger & USB: USB 2.0, power jack	Full I/O: USB 2.0, RS-232, HDMI, power jack, battery charging station Charger & USB: USB 2.0, power jack

Desk Dock



Applicable Model	AIM-58/78H	MIT-W102	MIT-W102	PWS-872
Part Number	AIM-OFD0-0001 (full I/O) AIM-OFD0-0003 (charger & USB)	MIT-W102-ACCDS001E	MIT-W101-ACCVB001E	PWS-870-CRADLE00E
Features	Full I/O: USB 2.0, RS-232, HDMI, power jack, battery charging station Charging & USB: USB 2.0, power jack	I/O: USB 2.0, RS-232, VGA, LAN, audio jack, power jack, battery charging station	3-in-1 multifunctional stand VESA mount (75 x 75) kick stand hand strap	I/O: USB 3.0, RS-232, VGA, LAN, power jack

Extension Module



Barcode scanner 20°

Barcode scanner 70°

MSR + barcode scanner

Applicable Model	AIM-65/68/75S/78S	AIM-65/68/75S/78S	AIM-65/68/75S/75H/78S
Part Number	AIM-EXT0-0040	AIM-EXT0-0041	AIM-P521A0
Features	Sensor: 640 x 480 CMOS sensor Field of view: horizontal: 37.8°; vertical: 28.8°	Sensor: 640 x 480 CMOS sensor Field of view: horizontal: 37.8°; vertical: 28.8°	MSR Swipe Speed: 3 ~ 75 in/sec Supported Format: ISO 7811/ JIS II bi-directional swipe Barcode Scanner Sensor: 640 x 480 CMOS sensor Field of view: horizontal: 37.8°; vertical: 28.8°

Extension Module



MSR module

LAN + COM module

UHF RFID reader

Applicable Model	AIM-65/68/75S/78S	AIM-65/68/75S/78S	AIM-65/68/75S/75H/78S
Part Number	AIM-P521B0	AIM-EXT0-0046	AIM-EXT0-0047 (EU) AIM-EXT0-0049 (US)
Features	Swipe Speed: 3 ~ 75 in/sec Supported Format: ISO 7811/ JIS II bi-directional swipe	1 x 10/100 Ethernet port 1 x COM port	RFID output: 25W Supported tag standard: EPC Class 2, Gen. 2/ ISO 18000-6C

Extension Module



UHF RFID reader (flat type)

Additional I/O module

MSR & smart card reader

Applicable Model	AIM-65/68/75S/78S	PWS-872	PWS-872
Part Number	AIM-EXT0-0050	PWS-870-EXT100E	PWS-870-EXT300E
Features	RFID output: 25W Frequency: EU: 867 ~ 869 MHz Supported tag standard: EPC Class 2, Gen. 2/ ISO 18000-6C	I/O: USB 3.0, LAN, RS-232	MSR and smart card reader

Extension Module



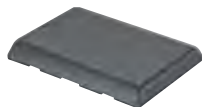
Barcode scanner 20°

Barcode scanner 70°

LAN + COM module

Applicable Model	AIM-55/58/75H/78H	AIM-55/58/75H/78H	AIM-55/58/75H/78H
Part Number	AIM-BCRS-0020	AIM-BCRS-0070	AIM-LANC-0001
Features	Sensor: 640 x 480 CMOS sensor Field of view: horizontal: 37.8°; vertical: 28.8°	Sensor: 640 x 480 CMOS sensor Field of view: horizontal: 37.8°; vertical: 28.8°	1 x 10/100 Ethernet port 1 x COM por

Battery



Applicable Model	AIM-55/65/75S/75H	AIM-58/68/78S/78H	PWS-872
Part Number	AIM-BAT0-0252	AIM-BAT0-0452	PWS-870-BAT200E
Features	Hot-swappable, 3.8V, 18.6Whr, 4900mAh	Hot-swappable, 10.8V, 26Whr, 2400 mAh	Hot-swappable, 14.8V, 63.64Whr, 4300mAh

Multi-Battery Charging Station



Applicable Model	AIM-65/68/75S/78S	AIM-55/58/75H/78H	PWS-872
Part Number	AIM-MBC0-0051	AIM-MBCS-0001	PWS-870-MBC00E
Features	Supports up to 4 batteries	Supports up to 4 batteries	Supports up to 4 external battery packs

Multi-Tablet Charging Station



Applicable Model	AIM-37	AIM-65/75S	AIM-55/75H
Part Number	AIM-P705A0	AIM-CHG0-0150	AIM-MTCS-0001
Features	Supports up to 10 tablets	Supports up to 4 batteries	Supports up to 4 external battery packs

Accessories



	Hand strap	Hand strap	Shoulder strap	Shoulder strap
Applicable Model	AIM-37	AIM-65/68/75S/78S AIM-55/58/75H/78H	AIM-65/68/75S/78S AIM-55/58/75H/78H	AIM-68/78S AIM-58/78H
Part Number	AIM-P702	AIM-SRP0-0000	AIM-SRP0-0001	AIM-SRP0-0002
Features	Synthetic leather w/ Elastic band	Stylus holder	Stylus holder	Stylus holder



	Rotatable hand strap	Holster	Universal cover package	8" AG+AR screen protection film
Applicable Model	AIM-65/68/75S/78S AIM-55/58/75H/78H	AIM-55/65/75S/75H	PWS-872	AIM-55/65/75S/75H
Part Number	AIM-SRP0-0004	AIM-HOL0-0160	PWS-870-UCOVER00E	AIM-EXT0-0181
Features	360° rotatable handstrap			



	10" AG+AR screen protection film	10" screen protection film	PCAP stylus	Active pen
Applicable Model	AIM-58/68/78S/78H	PWS-872	AIM-37/65/68/75S/78S AIM-55/58/75H/78H	PWS-872
Part Number	AIM-EXT0-0480	PWS-872-PROFILM	AIM-P704	PWS-872-ACTPEN
Features				



	Rugged Case
Applicable Model	AIM-65/75S
Part Number	AIM-SPR0-0005
Features	1.8M drop tolerance

Thermal Printer



Applicable Model	AIM-37
Part Number	AIM-P701A0
Features	Embedded Seiko 3" thermal printer I/O: USB 2.0, RS-232, cash drawer trigger

Regional Service & Customization Centers

China	Kunshan 86-512-5777-5666	Taiwan	Taipei 886-2-7732-3399	Netherlands	Eindhoven 31-40-267-7000	Poland	Warsaw 00800-2426-8080	USA	Milpitas, CA 1-408-519-3898
--------------	-----------------------------	---------------	---------------------------	--------------------	-----------------------------	---------------	---------------------------	------------	--------------------------------

Worldwide Offices

Asia Pacific

Taiwan	
Toll Free	0800-777-111
Taipei & IoT Campus	886-2-7732-3399
Taichung	886-4-2372-5058
Kaohsiung	886-7-392-3600
China	
Toll Free	800-810-0345
Beijing	86-10-6298-4346
Shanghai	86-21-3632-1616
Shenzhen	86-755-8212-4222
Chengdu	86-28-8545-0198
Hong Kong	852-2720-5118

Asia Pacific

Japan	
Toll Free	0800-500-1055
Tokyo	81-3-6802-1021
Osaka	81-6-6267-1887
Nagoya	81-0800-500-1055
Nogata	81-949-22-2890
Korea	
Toll Free	080-363-9494/5
Seoul	82-2-3660-9255
Singapore	
Singapore	65-6442-1000
Malaysia	
Kuala Lumpur	60-3-7725-4188
Penang	60-4-537-9188
Thailand	
Bangkok	66-02-2488306-9
Vietnam	
Hanoi	84-24-3399-1155
Hochiminh	84-28-3836-5856
Indonesia	
Jakarta	62-21-751-1939
Australia	
Toll Free	1300-308-531
Melbourne	61-3-9797-0100
India	
Bangalore	91-94-4839-7300
Pune	91-94-2260-2349

Europe

Netherlands	
Eindhoven	31-40-267-7000
Breda	31-76-523-3100
Germany	
Toll Free	00800-2426-8080/81
Munich	49-89-12599-0
Düsseldorf	49-2103-97-855-0
France	
Paris	33-1-4119-4666
Italy	
Milan	39-02-9544-961
UK	
Newcastle	44-0-191-262-4844
London	44-0-870-493-1433
Spain	
Madrid	34-91-668-86-76
Sweden	
Stockholm	46-0-864-60-500
Poland	
Warsaw	48-22-31-51-100
Russia	
Moscow	8-800-555-01-50
St. Petersburg	8-812-332-57-27
	8-921-575-13-59
Czech Republic	
Ústí nad Orlicí	420-465-524-421
Ireland	
Galway	353-91-792444

Americas

North America	
Toll Free	1-888-576-9668
Cincinnati	1-513-742-8895
Milpitas	1-408-519-3898
Irvine	1-949-420-2500
Ottawa	1-815-433-5100
Chicago	1-888-576-9668
Boston	1-800-866-6008
Brazil	
Toll Free	0800-770-5355
São Paulo	55-11-5592-5367
Mexico	
Toll Free	1-800-467-2415
Mexico City	52-55-6275-2777
Guadalajara	52-33-3169-7670
Middle East and Africa	
Israel	072-2410527
Turkey	90-212-222-0422
Turkey-Bursa	90-224-413-3134



Zapraszamy do kontaktu!
Więcej informacji: www.kreski.pl

ADVANTECH

Enabling an Intelligent Planet

www.advantech.com

Please verify specifications before ordering. This guide is intended for reference purposes only.
All product specifications are subject to change without notice.
No part of this publication may be reproduced in any form or by any means, electronic, photocopying, recording or otherwise, without prior written permission of the publisher.
All brand and product names are trademarks or registered trademarks of their respective companies.
© Advantech Co., Ltd. 2021



Solution info

8600000559