

Panasonic
BUSINESS

TOUGHBOOK

Solution Guide TOUGHBOOK T1 mk1



Kreski

Zapraszamy do kontaktu!
Więcej informacji: www.kreski.pl



TOUGHBOOK T1

STYLE WITH SUBSTANCE

The TOUGHBOOK T1 brings together the best of handheld and smartphone functionality into a single design. The eye-catching yet durable 5" Android™ device is the ideal all-rounder for mobile workforces in a wide range of roles and industries, including retail and hospitality, manufacturing, transportation and logistics.

- Qualcomm® Snapdragon Quad-core processor
- Android™ 8.1
- 5" HD display with glove and rain mode
- 2 GB RAM and 16 GB flash storage
- Integrated 1D/2D barcode reader
- Two user-configurable scan buttons for left and right handed users
- Optional 4G data and voice capability
- Tested to MIL-STD 810G*
- IP68 rated*
- -10°C to +50°C operating temperature
- User-replaceable battery with warm-swap function
- Up to 12 hours continuous data access time
- Enterprise level security and manageability (COMPASS)
- 3 microphones for intelligent noise cancellation
- Loud volume speakers

* Tested by an independent third party lab following MIL-STD-810G and IEC 60529, Sections 13.4, 13.6.2, 14.2.5 and 14.3

All technical specifications are subject to change without notice.

TOUGHBOOK T1 ACCESSORY ECOSYSTEM



Panasonic COMPASS covers everything you need to deploy and manage your Panasonic rugged Android tablets and handhelds securely in your business, over their lifetime. Look out for the logo next to the software and services that fall under the COMPASS umbrella in this catalogue.

Visit to find out more.

All technical specifications are subject to change without notice.

POWER MANAGEMENT SOLUTIONS

Standard Battery Pack

3200 mAh

Part Nos: FZ-VZSUT10U



5-Bay Battery Charger

Part No: FZ-VCBT131*

*G: Continental; E: UK; D: Swiss

Dimensions: Approx. 152 x 89 x 60 mm / 6.0" x 3.5" x 2.4"

Weight: Approx. . 0.44 kg / 1.0 lb

AC adaptor included.



USB AC Adaptor

Part No: FZ-AAE184E*

*E: UK; G: Continental
(inc. Swiss)



AC Adaptor

Part no: CF-AA5713A*

For use with 5-Bay
Charging Cradle (FZ-
VEH5T1AA*) and 5-Bay
Battery Charger (FZ-
VCH5T1AA*)



CARRYING SOLUTIONS

TOUGHBOOK T1 Holster

Part no: FZ-VSTT12U

Includes waist belt.



All technical specifications are subject to change without notice.

PRODUCTIVITY SOLUTIONS

Panasonic Thin Nib Passive Pen

Part No: CF-VNP021U



Panasonic Stylus Tether

Quantity of 3.

Part No: FZ-VNTT11U



Panasonic Pistol Grip

Part No: FZ-VGGT111U

Includes wrist strap.



Infocase Stylus Tether

Part No: PCPE-INFUVA2



Panasonic Headset

Part No: FZ-WHPX111



SECURITY & PROTECTION SOLUTIONS

LCD Screen Cleaning Cloth

Part No: CF-VNC002U

MOQ: 10 pcs



Shatterproof Protective LCD Film

10 sheets

Part No: FZ-VPFT11U



All technical specifications are subject to change without notice.

DOCKING SOLUTIONS

TOUGHBOOK T1 Charging Cup and Stand

Part No: FZ-VCBT11U

AC adaptor not included. Use with USB Adaptor FZ-AAE184E*.

Dimensions:

- Charging Cup : Approx. 85 x 33 x 63 mm / 3.4" x 1.3" x 2.5"
- Stand: Approx. 115 x 118 x 75 mm / 4.6" x 4.7" x 3.0"

Weight:

- Charging Cup: Approx. 60 g / 0.13 lb
- Stand : Approx. 160 g / 0.21 lb



TOUGHBOOK T1 Single Device Desktop Cradle

Part No: FZ-VEH1T1AA* *3: Continental; E: UK

AC adaptor included.

Ports: 5V DC-IN, 1 x Micro USB type-B port

Operating Temperature: 0 °C - 40 °C / 32 °F - 104 °F

Dimensions: Approx. 80 x 115 x 83 mm / 3.2" x 4.6" x 3.3"

Weight: Approx. 390 g / 0.9 lb



TOUGHBOOK T1 5-Bay Desktop Cradle

Part Nos:

FZ-VCH5T1AA* Charge Only
FZ-VEH5T1AA* Charge and 2 x LAN

*3: Continental; E: UK; D: Swiss

AC adaptor included (CF-AA5713A)

Operating Temperature: 0 °C - 40 °C / 32 °F - 104 °F

Dimensions: Approx. 400 x 115 x 83 mm / 15.8" x 4.6" x 3.3"

Weight: Approx. 1.3 kg / 2.6 lb

Ports: 15.6V DC-in; 2 x LAN Port (10Base-T / 100Base-TX / 1000Base-T)



All technical specifications are subject to change without notice.

MOBILE PRINT SOLUTIONS

PJ7 Series A4 Mobile Printers

Perfectly dimensioned for your briefcase or computer bag, PJ7 series of compact, direct thermal printers can also be easily mounted in your vehicle. Take it out on the road and make sure your clients and customers receive those all-important documents in an instant. Available with 300 dpi print resolution, and with USB, Bluetooth or Wi-Fi.

| | | |
|-----------|--------------|---|
| Part No.: | PCPE-BRPJ763 | PJ763 A4 mobile printer, 300 dpi with USB & Bluetooth |
| | PCPE-BRPJ773 | PJ773 A4 mobile printer, 300 dpi with USB, Wi-Fi and AirPrint |



Zapraszamy do kontaktu!
Więcej informacji: www.kreski.pl

All technical specifications are subject to change without notice.

PRODUCTIVITY SOLUTIONS

Compact Wearable Barcode Scanner

Part Nos:

- PCPE-PGLSCN1 – Standard Range
- PCPE-PGLSCN2 – Mid Range



Barcode Scanner Charging Cradle

With International plugs

Part No: PCPE-PGLCHR3



Index Trigger Wrap - 3 Pcs. Pack

Part Nos:

- PCPE-PGLITSL - Left Hand, Size Small
- PCPE-PGLITML - Left Hand, Size Medium
- PCPE-PGLITLL - Left Hand, Size Large
- PCPE-PGLITSR - Right Hand, Size Small
- PCPE-PGLITMR - Right Hand, Size Medium
- PCPE-PGLITLR - Right Hand, Size Large



Bluetooth Headset

Part No: PCPE-MODBTH1



Headset Battery Charger – 10 bay

Part No: PCPE-MOD10BC



Replaceable Batteries – 25 pack

Part No: PCPE-MODBAT1



All technical specifications are subject to change without notice.



PROSERVICES

PROFESSIONAL SERVICES



Android Installation

Part No: PCPE-PSANDRD

Price on Request

Custom ROM Creation

Price and SKU on Request. Depends on complexity.

SIM Installation

Part No: PCPE-PSSIMIN

Asset Tagging

Standard, using CPE label set.

Part No: PCPE-PSATAG1

Information Management Bundle

IMEI, MAC, SIM, ASSET, Hardware Hash reporting.

Part No: PCPE-PSATAGB

Solution Packaging

Up to 10 items packaged together in a box.

Does not include custom designed case.

Part No: PCPE-PSSPACK

Customer Branding

Logo badge on device casing or bezel.

Part Nos: PCPE-PSLOGOB

Customised Deployment / Logistics

Part No: PCPE-PSCDL01

Price on Request.



Zapraszamy do kontaktu!
Więcej informacji: www.kreski.pl

All technical specifications are subject to change without notice.



LIFECYCLE SUPPORT



Extended Warranty (4 or 5 years)

Panasonic's Extended Warranty provides an additional two years of warranty, helping you to minimise repair costs and maximise the life cycle of your TOUGHBOOK or Toughpad.

Part No.: HH-LESPEW* *4 / 5

Accidental Damage (3, 4 or 5 years)

Panasonic's Accidental Damage Warranty provides protection against any eventuality out in the field for up to 5 years, providing you and your workforce with complete peace of mind.

Part No.: HH-LESPAD* *3 / 4 / 5 (4 & 5 year options include Extended Warranty)

Smart Battery Warranty



Smart Battery Monitor software, powered by B2M Solutions, monitors device battery health in real-time. Smart Battery Monitor will indicate when batteries reach low capacity during normal use, so a replacement battery can be sent out in advance. Available at point of sale of device only.

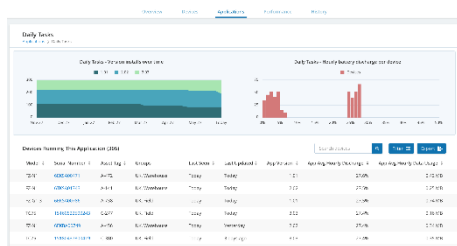
Part No.: CF-LESPBASS3/4/5 3/4/5 year Smart Battery Warranty



Zapraszamy do kontaktu!
Więcej informacji: www.kreski.pl

All technical specifications are subject to change without notice.

TOUGHBOOK Smart Service

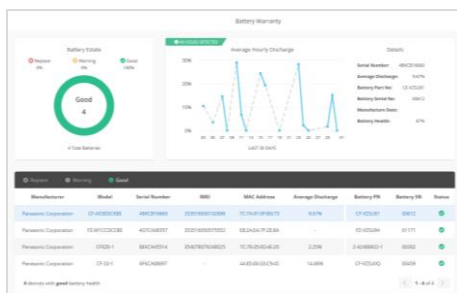


Real time analytics, powered by B2M Solutions, showing the health and performance of your estate of mobile devices, focussing on areas such as battery life, data usage, disruptions and connectivity. Enables the user to recognise patterns of usage and potentially pre-empt issues before they arise.

Part Nos.:

- **CF-LESPSSSM3** 3 year Smart Service self-managed licence
- **CF-LESPSSSM5** 5 year Smart Service self-managed licence

Smart Battery Monitor

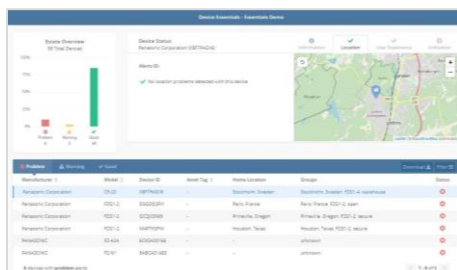


An additional "Smart" module that monitors battery usage and health in detail, focusing on battery serial numbers, the software allows the customer to track, identify and replace batteries before they impact productivity. With dashboard access and alerts.

Part Nos:

- **CF-LESPBAEE1** 1 year Smart Battery Monitor software licence
- **CF-LESPBAEE3** 3 year Smart Battery Monitor software licence
- **CF-LESPBAEE5** 5 year Smart Battery Monitor software licence

Smart Device Monitor



An additional "Smart" module that monitors device usage in more detail. Dashboard access provides information such as device location; user experience, including drop detection on Android devices and also enables alerts and geofences to be set up.

Part Nos:

- **CF-LESPDAEE1** 1 year Smart Device Monitor software licence
- **CF-LESPDAEE3** 3 year Smart Device Monitor software licence
- **CF-LESPDAEE5** 5 year Smart Device Monitor software licence

SOFTWARE SOLUTIONS – PREMIER PARTNERS



Absolute Data and Device Security

Patented technology to centrally secure TOUGHBOOK devices for unrivalled endpoint security and data risk management.

Part numbers available upon request.

Website: <https://www.absolute.com/partners/oem/panasonic/>



NetMotion Mobility

More than just a VPN, "Mobility" Mobile Performance Management software can dynamically maintain access to applications through changing network conditions, allowing mobile workers to remain productive anywhere their work takes them. Diagnostics option also available.

Part numbers available upon request.

Website: <https://www.netmotionsoftware.com/products/mobility>



SOTI MobiControl

MobiControl is an Enterprise Mobility Management (EMM) solution with enhanced EMM features like application management, content management, location services and remote help.

Part numbers available upon request.

Website: <https://www.soti.net/products/soti-mobicontrol/>



Sygic

Sygic Professional GPS Navigation works offline and features truck specific routing, itinerary with time windows and over 60 APIs for development with Android and Windows based apps.

Part numbers available upon request.

Website: <https://www.sygic.com/enterprise/professional-gps-navigation-sdk>

For more info on these software solutions, please refer to the co-branded data sheet [here](#).

SOFTWARE SOLUTIONS – CERTIFIED PARTNERS



StayLinked

StayLinked's SmartTE software provides a cost-effective way to take advantage of touchscreen devices with Terminal Emulation by transforming traditional "green screen" application screens into easy-to-use, graphical screens with no changes to the underlying enterprise applications.

For more information or to request a demo, visit:
<https://www.staylinked.com/panasonic>



Loqus

Loqus Fleet Ltd specialises in the provision of end-to-end Transport management systems providing organisations with the necessary tools to help them Plan, Execute and Monitor & Control work orders from initial order taking down to the last mile. Headquartered in Malta, the group employs a passionate team of high calibre software engineers supported by an experienced management team

Visit website: <http://openfleet.loqusgroup.com/>



Acronis

Acronis sets the standard for cyber protection and hybrid cloud storage through its innovative backup, anti-ransomware, disaster recovery, storage, and enterprise file sync and share solutions. Enhanced by its award-winning AI-based active protection technology, blockchain-based authentication and unique hybrid-cloud architecture, Acronis protects all data in any environment – including physical, virtual, cloud, mobile workloads and applications – all at a low and predictable cost.

Visit website: <https://www.acronis.com>



GPC Systems

GPC is an award-winning software house with over 25 years of experience working with a range of sectors across the globe. Driven by the needs of their customers in healthcare, transportation, police, logistics and local government, GPC strives to improve outcomes through the most efficient use of resources. GPC has in-depth experience creating solutions utilising 3D cameras, including the Intel® RealSense™ technology integrated into the TOUGHBOOK M1.

Visit website: <https://www.gpcsl.com/>

All technical specifications are subject to change without notice.



ACCESSORY SUMMARY 1

| Solution Type | Part Number | Description |
|---------------------------|----------------------|--|
| Power Management | FZ-VZSUT10U | Standard Battery Pack (3200 mAh) – 1 pc |
| | FZ-VCBT131* | 5-Bay Battery Charger |
| | FZ-AAE184E* E/G | USB Charger Kit (E: UK; G: Continental) |
| | CF-AA5713A | AC Adaptor |
| Carrying Solutions | FZ-VSTT12U | Panasonic TOUGHBOOK T1 Holster |
| Productivity Solutions | CF-VNP021U | Panasonic Thin Nib Passive Pen |
| | FZ-VNTT11U | Panasonic Stylus Tether (Qty 3) |
| | PCPE-INFUVA2 | Toughmate Stylus Tether |
| | FZ-VGGT111U | Panasonic Pistol Grip |
| | FZ-WHPX111 | Panasonic Headset |
| | PCPE-MOVBTH1 | Bluetooth Headset |
| | PCPE-MOD10BC | Bluetooth Headset 10 Bay Charger |
| Protection & Security | CF-VNC002U | Cleaning Cloth for LCD |
| | FZ-VPFT11U | Shatterproof Protective LCD film |
| Docking Solutions | FZ-VCBT11U | Charging cup and stand. |
| | FZ-VEH1T1AA* | Single Device Desktop Cradle |
| | FZ-VCH5T1AA* | 5-Bay Charge Only Desktop Cradle |
| | FZ-VEH5T1AA* | 5-Bay Desktop Cradle |
| Mobile Print Solutions | PCPE-BRPJ763 | PJ763 A4 mobile printer, 300 dpi with USB & Bluetooth |
| | PCPE-BRPJ773 | PJ773 A4 mobile printer, 300 dpi with USB, WiFi and AirPrint |
| Barcode Scanner Solutions | PCPE-PGLSCN1 | Standard Range Barcode Scanner |
| | PCPE-PCGCHR2 | Barcode Scanner Charging Cradle EU |
| | PCPE-PGLIT* SL/ML/LL | Index Trigger Glove – 3 Pcs. Pack (SL: Left Hand Small Size, ML: Left Hand Medium Size, LL: Left Hand Large Size) |
| | PCPE-PGLIT* SR/MR/LR | Index Trigger Glove – 3 Pcs. Pack (SR: Right Hand Small Size, MR: Right Hand Medium Size, LR: Right Hand Large Size) |
| Professional Services | PCPE-PSANDRD | Android Installation |
| | PCPE-PSSIMIN | SIM Installation |
| | PCPE-PSATAG1 | Asset Tagging |
| | PCPE-PSATAGB | Information Management Bundle |
| | PCPE-PSMACAD | MAC Address Stickers |
| | PCPE-PSLOGOB | Custom logo badge |
| | PCPE-PSSPACK | Solution Packaging |
| | PCPE-PSCDL01 | Customised Deployment / Logistics |
| | PCPE-PSBTM01 | Bespoke Training Material |
| | PCPE-PSHDDD1 | HDD / SSD Duplication |

ACCESSORY SUMMARY 2

| Solution Type | Part Number | Description |
|-----------------------------|-----------------------|-----------------------------------|
| Professional Services | PCPE-PSANDRD | Android Installation |
| | PCPE-PSSIMIN | SIM Installation |
| | PCPE-PSATAG1 | Asset Tagging |
| | PCPE-PSATAGB | Information Management Bundle |
| | PCPE-PSSPACK | Solution Packaging |
| | PCPE-PSLOGOB | Customer Branding |
| | PCPE-PSCDL01 | Customised Deployment / Logistics |
| COMPASS | FZ-YCZDCOMP* 2U/4U/6U | COMPASS Complete |
| | FZ-YCZDCOMP* 8U/AU/CU | Smart COMPASS Complete |
| Lifecycle support solutions | HH-LESPEW* 4/5 | Extended Warranty |
| | HH-LESPAD* 3/4/5 | Accidental Damage Warranty |
| | CF-LESPBASS* 3/4/5 | Smart Battery Warranty |



Zapraszamy do kontaktu!
Więcej informacji: www.kreski.pl