

TC7X ACCESSORIES GUIDE

Kreski

Zapraszamy do kontaktu!
Więcej informacji: www.kreski.pl

ZEBRA TC70/75 & 70x/75x Accessory Ecosystem



A robust accessory family to tailor the TC70(x)/TC75(x) Series for any enterprise

The Comprehensive family of accessories includes a snap-on magnetic stripe reader for mobile payment, a holster, a hand strap, a snap-on trigger handle and more, allowing you to easily tailor the TC70(x)/TC75(x) to meet the needs of many different types of users performing many different types of tasks. Multi-slot battery chargers and the unique ShareCradle – a multi-slot and 2-slot cradle system that can accommodate charge-only or data transfer needs for the TC70(x)/TC75(x) and future Zebra mobile computers– make backroom management easy and cost effective.

ZEBRA Batteries / Battery Charging Accessories

4620 mAh Battery

BTRY-TC7X-46MPP-01

TC7X PowerPrecision+ spare lithium ion Battery, 4620mAh (single) Advanced new battery technology, provides a higher level of intelligence (State of Charge and State of Health) to deliver maximum performance.



BTRY-TC7X-46MPP-10

10-Pack



Charging LED indicators

Off	Battery not charging
Solid Amber	Healthy battery charging
Solid Green	Healthy battery charging complete
Fast Blink Red	Charging error
Solid Red	Unhealthy battery charging or fully charged

Spare Battery Charging Options

SAC-TC7X-4BTYPP-01

Drop in style 4-Slot Battery Charger with LEDs to indicate Charge State. Can be docked and powered in the 5-Slot Cradle via adapter cup (Sold Separately) or used standalone.

When used stand-alone requires Power Supply:
PWR-BGA12V50W0WW and a DC Line cord: CBL-DC-388A1-01 and country specific AC line cord (Cords and Power Supplies Sold Separately). Compatible with both PowerPrecision and PowerPrecision Plus Batteries



Required Power Supply and DC Cable for Battery Charger:

Power supply for 4-slot battery charger: 100-240 VAC, 12VDC, 4.16A.

(PN: PWR-BGA12V50W0WW)

Requires: Country specific AC grounded line cord.



DC cable for Level 6 power supply
PWR-BGA12V50W0WW
(12 VDC, 4.16A), 1.8 M length.
(PN: CBL-DC-388A1-01)

US AC Line Cord



23844-00-00R

US AC line cord, 7.5 feet long, grounded, three wire for power supplies.

*See slide 19 for your country Line cord needs

Single Slot ShareCradle



ShareCradle, Charge & Ethernet Communication

The Single Slot ShareCradle is designed to provide the best desktop solution. Available in Charge-Only or USB/Ethernet variants, the Single Slot ShareCradles accommodate 1x TC70(x)/TC75(x) Series and 1x spare battery.

Note: Single Slot ShareCradles require power supply: PWR-BGA12V50W0WW and requires a DC line cord: CBL-DC-388A1-01 and country specific AC line cord (Cords and Power Supplies Sold Separately)

CRD-TC7X-SE2CPP-01: Single Slot Charge Only ShareCradle with spare battery charger for 1x TC7x with 1x spare battery. Compatible with both PowerPrecision and PowerPrecision Plus batteries.

CRD-TC7X-SE2EPP-01: Single Slot USB/Ethernet ShareCradle with spare battery charger for 1x TC7x and 1x spare battery. Compatible with both PowerPrecision and PowerPrecision Plus batteries.

Single Slot Ethernet Module



MOD-MT2-EU1-01

USB to Ethernet Module integrated into the bottom of the cradle providing a mechanical switch between USB and Ethernet

Required for Single Slot cradle



Power supply for 2-slot cradle: 100-240 VAC, 12VDC, 4.16A. (PN: PWR-BGA12V50W0WW)
Requires: Country specific AC grounded line cord.



DC cable for power supply PWR-BGA12V50W0WW.
(12 VDC, 4.16A) 1.8m length.
(PN: CBL-DC-388A1-01)

US AC Line Cord



23844-00-00R

US AC line cord, 7.5 feet long, grounded, three wire for power supplies.

*See slide 19 for your country Line cord needs

Required for Multi-Slot ShareCradle

Power supply for multi-slot cradle: 100-240 VAC, 12VDC, 9A. (PN: PWR-BGA12V108W0WW)

Requires: Country specific AC grounded line cord (sold separately).



DC cable provides power from the power supply to multi-slot charge-only and Ethernet cradles.

(PN: CBL-DC-381A1-01)



US AC Line Cord



23844-00-00R

US AC line cord, 7.5 feet long, grounded, three wire for power supplies.

*See slide 19 for your country Line cord needs

Notes:

1. 5-Slot Cradles require Power Supply: **PWR-BGA12V108W0WW**; and requires a DC line cord: **CBL-DC-381A1-01** and country specific AC line cord (*cords sold Separately*)
2. Optional 4-Slot Battery Charger, 4-Slot Battery Charger Adapter Cup and Mounting Accessory sold separately

Multi-Slot ShareCradle



The 5-Slot ShareCradles provide high density & flexibility. Available in Charge-Only or Ethernet variants, the 5-Slot Share Cradles can accommodate either 5x or 4x TC70(x)/TC75(x) Series plus 4x spare batteries off of one power supply via the 4-Slot Battery Charger Adapter Cup (*Sold Separately*). The 5-Slot ShareCradles can be racked/mounted in a standard 19 in. rack system via the mounting accessory.

CRD-TC7X-SE5C1-01: TC7X 5-Slot Charge-Only Cradle for 5x TC7Xs or 4x TC7Xs 4x spare batteries off of one power supply via Adapter Cup sold separately. PWR-BGA12V108W0WW, country specific AC line cord and DC Line Cord CBL-DC-382A1-01 (Cords and Power Supplies Sold Separately)

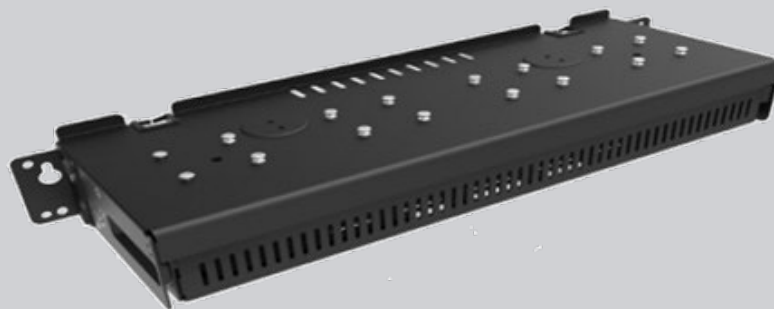
CRD-TC7X-SE5EU1-01: TC7X 5-Slot Ethernet Cradle for 5x TC7Xs or 4x TC7Xs 4x spare batteries off of one power supply via Adapter Cup sold separately. PWR-BGA12V108W0WW, country specific AC line cord and DC Line Cord CBL-DC-382A1-01 (Cords and Power Supplies Sold Separately)

Mount Options for Multi-Slot Cradles

MAXIMUM DENSITY

RACK MOUNTED SOLUTION:

The Rack/Wall Mount Bracket has been optimized to work on a standard 19-inch IT rack. The brackets can also be configured in different angles for maximum flexibility.



Rack/Wall Bracket for Multi-Slot ShareCradle



BRKT-SCRD-SMRK-01

Rack/Wall mounting bracket is designed to help customers install any Single-Slot or Multi-Slot ShareCradle on a wall or a 19" IT rack. The bracket also enables the installation of up to four 4-Slot Spare Battery Chargers together on a wall or standard 19" IT rack.

4-slot Battery Charging Solution

CUP-SE-BTYADP1-01

ShareCradle 4-Slot battery charger adapter cup. Allows for a 4-Slot Battery Charger to be charged and docked on the 5-Slot ShareCradles

CRD-TC7X-SE5C1-01

TC7X 5-Slot Charge-Only Cradle for 5x TC7Xs or 4x TC7Xs 4x spare batteries off of one power supply via Adapter Cup sold separately. PWR-BGA12V108W0WW, country specific AC line cord and DC Line Cord CBL-DC-382A1-01 (Cords and Power Supplies Sold Separately)



TC7X Attachable Trigger



TRG-TC7X-SNP1-02

TC70(x)/TC75(x) Snap-On Trigger Handle. Easily attaches to bottom housing and easily removed to access the battery. The trigger handle includes a wrist tether that is attached to the trigger and the bottom housing of the device

ShareCradle Compatibility Varies Based on Trigger Cleat	
For Use With Charge-Only ShareCradle	ADP-TC7X-CLH10-10 - pack of 10 pairs of cleats + straps – compatible to leave in with trigger gun
For Use With Ethernet ShareCradle	ADP-TC7X-CLPTH1-20 - pack of 20 cleats – compatible to leave in (but trigger gun needs to be removed)

Trigger Handle Service Plan

The TC7X trigger accessory provides users with significant flexibility as they adapt the TC7X device to different operations within their retail environment. The TC7X trigger accessory is considered a consumable item which may need to be replaced during the life of a TC7X. Therefore, Zebra highly recommends the purchase of a Zebra trigger handle service plan.

*For dedicated high-intensity scanning operations, customers are urged to consider Zebra mobile devices with integrated gun handles such as the MC33 and TC8000.

OPT-TRGMNT-3	3-Year Zebra OneCare Comprehensive Trigger Maintenance
OPT-TRGMNT-5	5-Year Zebra OneCare Comprehensive Trigger Maintenance

HD4000 Head-Mounted Display



USB-tethered connection to compatible Zebra Mobile Computers

- The HD4000 connects to compatible Zebra mobile computers via USB, giving a real time, crystal clear, see-through display in the wearer's field of view.
- The HD4000 optical module is mounted on a pair of safety glasses with a uniquely configurable adjustment mechanism, enabling users with a range of ergonomic requirements to position the display in the most effective manner.
- There are 2 models, one with front facing camera (**HD4000-P-GA1**) and one without (**HD4000-PC-GA1**).
- The HD4000, being USB-tethered, takes it's power, wireless connectivity, processing power and storage from the host device.

Frame Mount: An additional glasses frame/mount (**HD4000 -GA1-FM**) is also available to enable additional users to share a single optical module.

Key Target Use Cases: Warehouse picking and replenishment, Field Service and maintenance, Manufacturing assembly and kitting, Post & Courier sortation.

Compatible Zebra Mobile Computers



TC51/56 & TC52/57

USB cable required: **CBL-TC5X-USBHD-01**.
HD4000 (GA) to TC5X (USB C female to TC5X USB charging/comms connector)



TC70/75 & TC72/77

USB cable required: **CBL-TC7X-USBHD-01**.
HD4000 (GA) to TC7X (USB C female to TC7X USB charging/comms connector)



WT6000

USB cable required: **CBL-NGWT-USBHD-01**.
HD4000 (GA) to WT6XXX (USB C female to WT6K NG USB Male connector)

Options For Prescription Glasses Wearers

Additional options will be available shortly to suit wearers of prescription glasses.

Estimated availability: Late Q1 2020

- The HD4000 optical modules will be common with the non-prescription glasses versions.
- No power cords are required for the HD4000 as it is USB-powered.

Notes:

1. Cables for additional Zebra mobile computers will be introduced on a case by case basis.
2. Additional cable retention sleeves are available as packs of 5 (**HD4000-GA1-CS5**)

Hand Strap

SG-TC7X-HSTR2-03

3-pack of hand straps. Made of leather and Hypalon, this adjustable hand strap provides comfort to support a wide range of hand sizes while resisting wear in rugged environments. The hand strap also provides a loop tether point for the optional stylus. Plastic clip latches into terminal for easy insertion and removal



Soft Holster

SG-TC7X-HLSTR1-02

Soft holster for vertical orientation with open bucket design to accommodate hand strap and snap-ons, such as the MSR for easy insertion and removal. Includes loop for optional stylus



Stylus & Screen Protector

SG-TC7X-STYLUS-03

Stylus with coiled tether 3-pack. Made of conductive carbon-filled plastic material, optimized for enterprise durability.
(Stylus only 3-Pack: SG-TC7X-STYLUS1-03)
(Tether only 3-Pack: KT-TC7X-TETHR1-03)



SG-TC7X-SCRNTMP-01

This optional screen protector safeguards the display, eliminates sunlight glare and maintains clarity of your mobile computer. Part contains 1 each, and compatible with the TC70x/TC75x (Android) Only



Rigid Holster

SG-TC7X-RHLSTR1-01

Rigid Holster with snap-in design. Rotating Belt Clip with ability to insert in either direction. Compatible with Snap-on Accessories excluding the Trigger Handle.



Rugged Headset

HS2100-OTH

HS2100 Rugged Wired Headset Over-The-Head Headband includes HS2100 Boom Module and HSX100 OTH Headband Module



Audio Jack Adapter

ADP-TC7X-AUD35-01

Audio Accessory-Audio Adapter, Snap-On 3.5MM Audio Jack Adapter.



Headset

HDST-35MM-PTVP-01

Over the ear headset with mic and PTT button. Requires 3.5MM adapter cable CBL-TC51-HDST35-01 (sold separately).



Bluetooth Headset

HS3100-OTH

HS3100 Rugged Bluetooth Headset Over-The-Head Headband includes HS3100 Boom Module and HSX100 OTH Headband Module



Headset Adapter



ADP-35M-QDCBL1-01

3.5MM Quick-Disconnect Headset Adapter Cable. Connects headsets with Quick-Disconnect connector to devices with a standard 3-pole 3.5mm barrel jack connector.

MSR Adapter



MSR-TC7X-SNP1-01

Snap-on Mag Stripe Reader (MSR) for TC7X

Rugged Charge Cable

CHG-TC7X-CBL1-01

TC7X Charging Cable Cup. Requires PWR-BUA5V16W0WW, DC Cable CBL-DC-383A1-01 and Country specific AC Line Cord sold separately



USB Charge Cable

CBL-TC7X-USB1-02

Snap-On USB/Charge Cable.



Three charging solutions available:

1. Use Power Supply (PWR-BUA5V16W0WW), DC cable (CBL-DC-383A1-01) and Country Specific AC cord.
2. Use Power Supply (PWR-WUA5V12W0XX) plugs directly into wall socket. (Country specific part numbers shown on slide)
3. Use Car Charger (CHG-AUTO-USB1-01) plugs directly into vehicle via the cigarette lighter socket

Note: All power supplies and Cables / Cords Sold Separately

Charging Solution Options

1. Power Supply and DC Cable

Power supply for USB Cable: 100-240V, 0.6A DC Output: 5.4V, 3A, 16W
(PN: PWR-BUA5V16W0WW)

DC cable for power supply
PWR-BUA5V16W0WW.
(PN: CBL-DC-383A1-01)



Requires: Country specific AC grounded line cord.

2. Wall Plug Power Supply

PWR-WUA5V12W0xx

Power Supply-100-240 VAC, 5 V, 2.5 A with country specific plugs.



Country	Power Supply Part Number
United States	PWR-WUA5V12W0US
Great Britain	PWR-WUA5V12W0GB
Europe	PWR-WUA5V12W0EU
Australia	PWR-WUA5V12W0AU
China	PWR-WUA5V12W0CN
Brazil	PWR-WUA5V12W0BR
Korea	PWR-WUA5V12W0KR
India	PWR-WUA5V12W0IN

3. Car Charger Power Supply

CHG-AUTO-USB1-01

CIGARETTE TO USB ADAPTER
Charges the TC7X and a printer via the vehicle lighter power adapter.



Vehicle Cradle

CRD-TC7X-VCD1-01

TC7X Vehicle Data Communication and Charge Cradle Kit with USB I/O Hub. For power it requires CHG-AUTO-CLA1-01 or hard wired CHG-AUTO-HWIRE1-01, both sold separately.



Vehicle Cradle

CRD-TC7X-CVCD1-01

TC7X Charge Only Vehicle Cradle. Compatible with snap on accessories (excluding Trigger handle). Optional CLA or Hardwire Charging, Windshield or Hard installation via Ram mounts sold separately.



Vehicle Cradle

CRD-TC7X-DCVH-01

TC7X Data Communication Device Holder/Cradle. Supports Hand Strap and Stylus. For mounting, Windshield Suction Mount RAM-B-166U or RAM Ball Mount RAM-B-238U plus additional RAM mount hardware (Sold Separately).



Auto Charge Cable

CHG-TC7X-CLA1-02

TC7X Auto Charging Cable Cup. Snaps onto the bottom of TC7x, allowing the users to charge their TC7x via a Vehicles Cigarette Light Adapter CLA.



Hardwire Auto Charge Cable

CHG-AUTO-HWIRE1-01

Hardwire Auto Charge Cable for the vehicle cradle. Allows for installation into vehicle's fuse box. Does not work without Cradle (Sold Separately)



Cigarette Light Adapter

CHG-AUTO-CLA1-01

Auto Charger for TC7X Vehicle Cradle sold separately. Cigarette light adapter to Barrel Jack.



Ram Suction Cup Mount

RAM-B-166U

RAM Twist Lock Suction Cup with Double Socket Arm and Diamond Base Adapter; Overall Length: 6.75". Compatible with both charge and communications vehicle cradles.



RAM Mount Ball Base

RAM-B-238U

RAM 2.43" x 1.31" Diamond Ball Base w/ 1" Ball



ProClip Swivel Mount

3PTY-PCLIP-215500

Tilt swivel mount for TC70/TC75 vehicle cradle



ProClip Pedestal Mount Kit

3PTY-PCLIP-710834

4" Pedestal mounting kit for TC70(x)/TC75(x) vehicle cradle.



ProClip Pedestal Mount Kit

3PTY-PCLIP-710835

4" Pedestal mounting kit for TC70(x)/TC75(x) vehicle cradle (90-degree 2 inch center rod).



ProClip Pedestal Mount Kit

3PTY-PCLIP-710836

2" Pedestal mounting kit for TC70(x)/TC75(x) vehicle cradle.



ProClip Forklift Cradle



3PTY-PCLIP-710832

TC7x Forklift cradle with 8" forklift grill mounting hardware

ProClip Forklift Cradle



3PTY-PCLIP-710833

TC7x Forklift cradle with 2" forklift grill mounting hardware

ProClip Forklift Mount

3PTY-PCLIP-215772

Forklift mount (clamps to post or grill on forklift)





ZEBRA Country Specific AC Line Cord Options



Country

Grounded AC Line Cord

Abu Dhabi	50-16000-220R: AC line cord, 1.8 m, grounded, three wire, CEE 7/7 plug.
Australia	50-16000-217R: AC line cord, 1.9 m, grounded, three wire, AS 3112 plug.
Bolivia	50-16000-220R: AC line cord, 1.8 m, grounded, three wire, CEE 7/7 plug.
China	50-16000-217R: AC line cord, 1.9 m, grounded, three wire, AS 3112 plug.
	50-16000-257R: AC line cord, 1.8 m, grounded, three wire, IEC 60320 C13 plug.
Dubai	50-16000-220R: AC line cord, 1.8 m, grounded, three wire, CEE 7/7 plug.
Egypt	50-16000-220R: AC line cord, 1.8 m, grounded, three wire, CEE 7/7 plug.
Europe	50-16000-220R: AC line cord, 1.8 m, grounded, three wire, CEE 7/7 plug.
Hong Kong	50-16000-219R: AC line cord, 1.8 m, grounded, three wire, BS1363 plug.
India	50-16000-669R: AC line cord, 1.9 m, grounded, three wire, BS 546 plug.
Iran	50-16000-220R: AC line cord, 1.8 m, grounded, three wire, CEE 7/7 plug.
Iraq	50-16000-219R: AC line cord, 1.8 m, grounded, three wire, BS1363 plug.
Israel	50-16000-672R: AC line cord, 1.9 m, grounded, three wire, S132 plug.
Italy	50-16000-671R: AC line cord, 1.8 m, grounded, three wire, CIE 23-16 plug.
Japan	50-16000-218R: AC line cord, 1.8 m, grounded, three wire, NEMA 1-15P plug.
Korea	50-16000-220R: AC line cord, 1.8 m, grounded, three wire, CEE 7/7 plug.
Malaysia	50-16000-219R: AC line cord, 1.8 m, grounded, three wire, BS1363 plug.
Russia	50-16000-220R: AC line cord, 1.8 m, grounded, three wire, CEE 7/7 plug.
Singapore	50-16000-219R: AC line cord, 1.8 m, grounded, three wire, BS1363 plug.
New Guinea	50-16000-217R: AC line cord, 1.9 m, grounded, three wire, AS 3112 plug.
United Kingdom	50-16000-219R: AC line cord, 1.8 m, grounded, three wire, BS1363 plug.
United States	23844-00-00R: US AC line cord, 7.5 ft. long, grounded, three wire.
	50-16000-221R: AC line cord, 1.8 m, grounded, three wire, USA NEMA 5-15P.
	50-16000-678R: AC line cord, 36in. long, grounded, three wire.
Vietnam	50-16000-220R: AC line cord, 1.8 m, grounded, three wire, CEE 7/7 plug.

Country

Ungrounded AC Line Cord

Argentina	50-16000-255R: AC line cord, 1.8 m, ungrounded, two wire, CEE7/16.
Australia	50-16000-666R: AC line cord, 1.8 m, ungrounded, two wire, AS 3112 plug.
Belgium	50-16000-255R: AC line cord, 1.8 m, ungrounded, two wire, CEE7/16.
Bermuda	50-16000-670R: AC line cord, 1.8 m, ungrounded, two wire, BS 1363 plug.
Chile	50-16000-255R: AC line cord, 1.8 m, ungrounded, two wire, CEE7/16.
China	50-16000-664R: AC line cord, 1.8 m, ungrounded, two wire, GB 2099-1-1996 plug.
France	50-16000-255R: AC line cord, 1.8 m, ungrounded, two wire, CEE7/16.
Germany	50-16000-255R: AC line cord, 1.8 m, ungrounded, two wire, CEE7/16.
Hong Kong	50-16000-670R: AC line cord, 1.8 m, ungrounded, two wire, BS 1363 plug.
India	50-16000-668R: AC line cord, 1.8 m, ungrounded, BS 546 plug.
Iraq	50-16000-670R: AC line cord, 1.8 m, ungrounded, two wire, BS 1363 plug.
Italy	50-16000-255R: AC line cord, 1.8 m, ungrounded, two wire, CEE7/16.
Malaysia	50-16000-670R: AC line cord, 1.8 m, ungrounded, two wire, BS 1363 plug.
Netherlands	50-16000-255R: AC line cord, 1.8 m, ungrounded, two wire, CEE7/16.
New Zeland	50-16000-666R: AC line cord, 1.8 m, ungrounded, two wire, AS 3112 plug.
Singapore	50-16000-670R: AC line cord, 1.8 m, ungrounded, two wire, BS 1363 plug.
South Korea	50-16000-255R: AC line cord, 1.8 m, ungrounded, two wire, CEE7/16.
Spain	50-16000-255R: AC line cord, 1.8 m, ungrounded, two wire, CEE7/16.
Sweeden	50-16000-255R: AC line cord, 1.8 m, ungrounded, two wire, CEE7/16.
United Kingdom	50-16000-670R: AC line cord, 1.8 m, ungrounded, two wire, BS 1363 plug.
United States	50-16000-182R: US AC line cord, ungrounded, two wire.
Vietnam	50-16000-255R: AC line cord, 1.8 m, ungrounded, two wire, CEE7/16.