



Label Rewinder Family

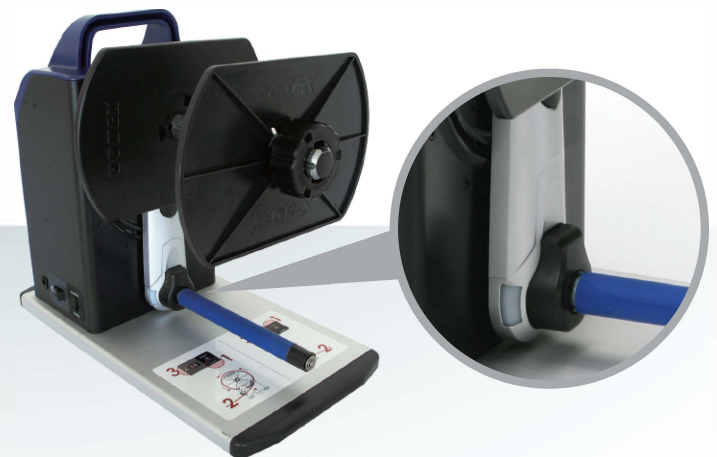
T10 / T20

The Rewinder Everyone Can Use

The T10 / T20 rewinder has an idler arm that can be positioned to rewind labels from either side of the printer. Depending on the user's requirements, the rewinder can rewind "inside or outside" label rolls.



VR(Speed Adjustment)



Colored LED indicator provides rewinder operation status

Label Rewinder Family

Model		T10	T20
Paper width		4.72" (Max.)	7" (Max.)
Rewind Speed		Auto mode: 14 IPS (max) Fixed: 2~15 IPS	
Label Roll		8" (Max.)	6" (Max.)
Core Roll		Coreless, 1" (25.2~25.6mm), 1.5"x2 (37.4~38.0mm & 40~40.6mm), 3" (76~76.6mm)	
Label Roll Weight		5 Kg	
Rewinding		Label Inside / Outside	
Switches		Rewind	
Motor		Hybrid Motor	
Power		100~240VAC 24W, 24V Adapter	
Environment	Operation Temp	41°F to 104°F(5°C to 40°C)	
	Storage Temp	-4°F to 122°F(-20°C to 60°C)	
Humidity		10-85% (non-condensing RH)	
Size (H*W*D)		303mm*180mm*349mm	303mm*180mm*394mm
Agency Approvals		CE, FCC Class A	
Weight		5 Kg (11 lb)	
* Specifications are subject to change without notice. All company and/or product names are trademarks and/or registered trademarks of their respective owners.			



Zapraszamy do kontaktu!
Więcej informacji: www.kreski.pl