

The Axicon logo consists of the word "axicon" in a white, lowercase, sans-serif font, set against a red rectangular background.

THE BARCODE EXPERTS

Features

Captures all coloured bars

Lightweight and portable

Automatic bi-directional decode

User configurable

Detailed reports

Axicon 6000W

Laetus pharmacode verifier

The Axicon 6000W Laetus pharmacode verifier has been specifically designed to meet the requirements for verifying the Laetus pharmacode (commonly called the Laetus or PCE Code) within the pharmaceutical industry. As these codes may be printed in several colours, they cannot be verified by conventional ISO/IEC compliant verifiers, and this special application was created by our engineers. It is a verifier that refers to the Laetus pharmacode specifications for print quality.

This verifier uses a white light source to be able to verify all symbols regardless of colour. It is an essential tool for all designers and printers of pharmaceutical packaging, as it can be used with pharmacodes printed in black and white or a combination of colours.

About Axicon

Axicon Auto ID is a world leader in barcode verification, having developed and manufactured our own range of verifiers since 1989. Axicon barcode verifiers are used to measure the quality of linear and matrix barcodes, on all levels of product packaging.

The Kreski logo features the word "Kreski" in a bold, italicized, sans-serif font, with a red horizontal line underneath the letters "K" and "r".

Zapraszamy do kontaktu!
Więcej informacji: www.kreski.pl



Industry
Partner

The Kreski logo features the word "Kreski" in a bold, italicized, sans-serif font, with a red horizontal line underneath the letters "K" and "r".

Church Road, Weston on the Green, Oxfordshire, OX25 3QP, UK
Tel: +44 (0)1869 351155 | Email: sales@axicon.com
Web: www.axicon.com



Software specifications

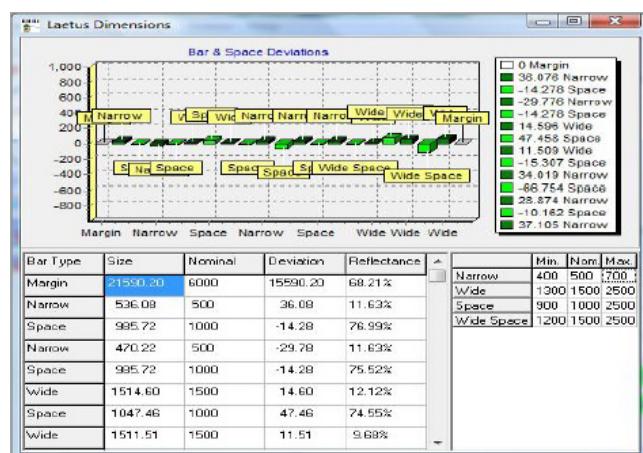
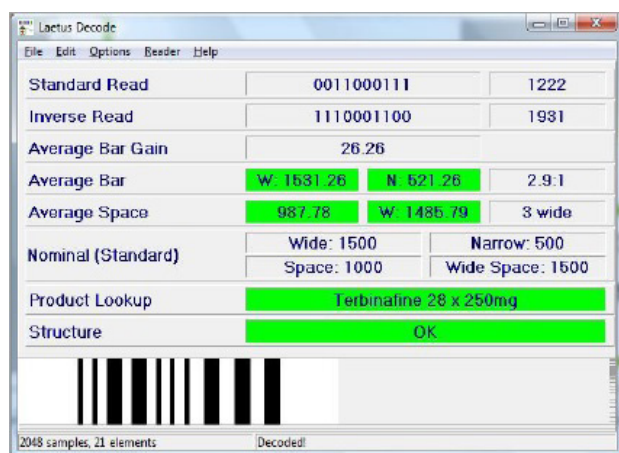
System requirements	PC running latest version of Windows
Symbologies verified	Laetus Pharmacode only
Application standards	Laetus Pharmacode
Analysis	Decode, inverse decode, elements dimensional analysis, product lookup, average bar gain.
Logging	Scan saving and loading - stores complete details of scan file data.
Diagnostic screens	Decode, dimensions, lookup, setup
Error messages	Structure error, unsuitable dimensions, product lookup not found.

Hardware specifications

Dimensions	175 x 75 x 55 mm (6.9" x 3.0" x 2.2")
Weight	250 g (8.82 oz)
Construction	ABS plastic, CCD sensor, LED illumination
Interface and power consumption	USB. 150mA at 5v.
Wavelength of light	White light
Maximum scan width	66 mm (2.6")

General information

Regulatory approvals	CE marking (compliant with RoHS and EMC directives) Can meet the requirements of 21 CFR part 11.
Operating range	Operating temperature: 10° to 40°C Storage temperature: -20° to 70°C Relative humidity: 25% to 80% @ 40°C non-condensing.
Warranty	Two years parts and labour - return to bench.



All trademarks are acknowledged as belonging to their respective companies.

As Axicon continually improves its products, the specifications and features explained here are subject to change without notice.

