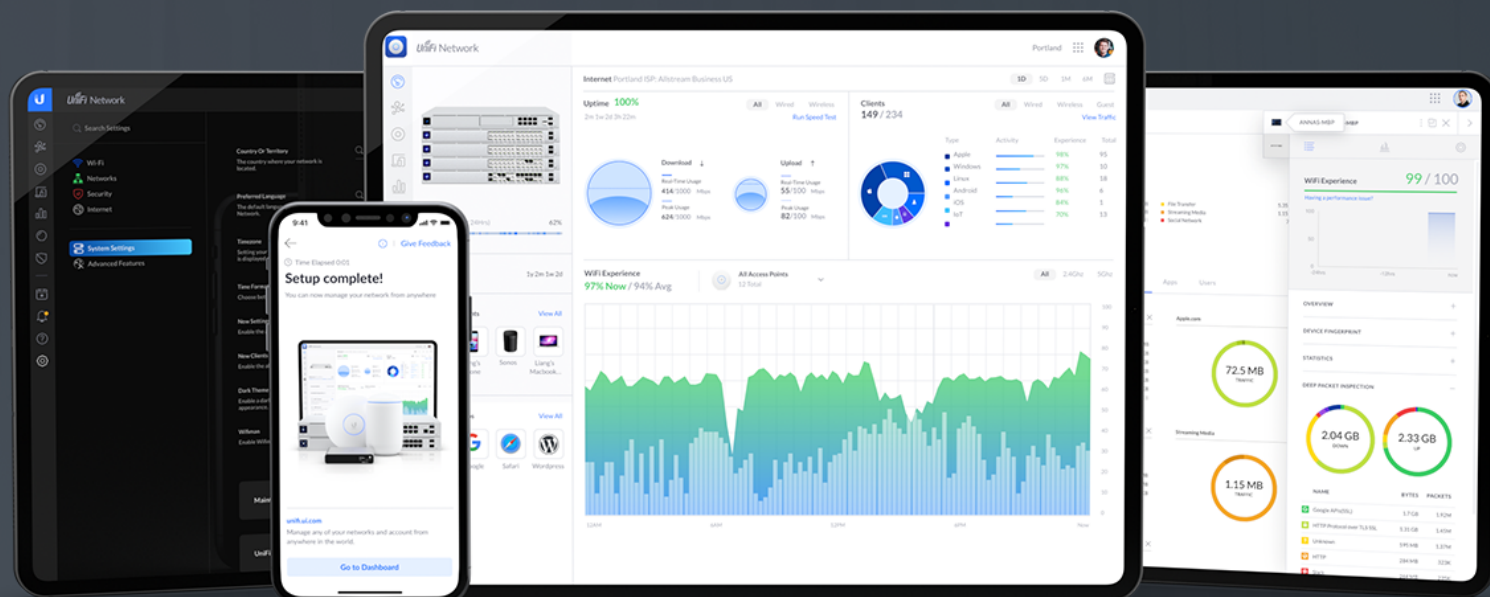


Kreski

Zapraszamy do kontaktu!
Więcej informacji: www.kreski.pl

UniFi® Network



Access Point WiFi 6 Long-Range

Enterprise-grade WiFi 6 access point with 4X4 MIMO and OFDMA functionality.

The Access Point WiFi 6 Long-Range (U6 LR) is a high-performance access point that brings powerful, four-stream WiFi 6 coverage to enterprise networks. The U6 LR can reach an aggregate throughput rate up to 3 Gbps with its 5 GHz (4x4 MU-MIMO and OFDMA) and 2.4 GHz (4x4 MIMO) bands. It also has a sideways, down-tilted antenna pattern to expand its coverage area. The water and dust-resistant U6 LR can be mounted either indoors or outside, blending seamlessly into virtually any environment so you'll never have to disrupt your space's aesthetic to enjoy excellent wireless coverage. The U6 LR simplifies the process of bringing WiFi 6 to enterprise networks that support a large number of clients. It can be set up in minutes and fully managed with the UniFi Network web application or mobile app.



Mechanical

Dimensions	Ø220 x 48 mm (Ø8.66 x 1.89")
Weight	Without mount: 800 g (1.76 lb) With mount: 930 g (2.05 lb)
Enclosure material	Plastic
Mount material	SGCC Steel
Weatherproofing	IP54

Hardware

Management interfaces	Ethernet Bluetooth	
Networking interface	(1) GbE RJ45 port	
Button	Factory reset	
LED*	White/Blue	
	*Due to chip supply shortages, the U6 LR's LED has been limited to only white and blue color modes.	
Power method	802.3at PoE+, passive PoE (48V)	
Power supply	UniFi PoE switch 48V, 0.5A PoE adapter (not included)	
Supported voltage range	44 to 57VDC	
Max. power consumption	16.5W	
Max. TX power	2.4 GHz	26 dBm
	5 GHz	26 dBm
MIMO	2.4 GHz	4 x 4
	5 GHz	4 x 4
Throughput rate	2.4 GHz	600 Mbps
	5 GHz	2400 Mbps
Antenna gain	2.4 GHz	4 dBi
	5 GHz	5.5 dBi
Mounting	Wall/ceiling (included)	
Operating temperature	-30 to 60° C (-22 to 140° F)	
Operating humidity	5 - 95% noncondensing	



Certifications	CE, FCC, IC
----------------	-------------

Software

WiFi standards	802.11a/b/g WiFi 4/WiFi 5/WiFi 6
Wireless security	WPA-PSK, WPA-Enterprise (WPA/WPA2/WPA3)
BSSID	8 per radio
VLAN	802.1Q
Advanced QoS	Per-user rate limiting
Guest traffic isolation	Supported
Concurrent clients	300+

Supported Data Rates

802.11a	6, 9, 12, 18, 24, 36, 48, 54 Mbps
802.11b	1, 2, 5.5, 11 Mbps
802.11g	6, 9, 12, 18, 24, 36, 48, 54 Mbps
802.11n (WiFi 4)	6.5 Mbps to 600 Mbps (MCS0 - MCS31, HT 20/40)
802.11ac (WiFi 5)	6.5 Mbps to 1.7 Gbps (MCS0 - MCS9 NSS1/2/3/4, VHT 20/40/80/160)
802.11ax (WiFi 6)	7.3 Mbps to 2.4 Gbps (MCS0 - MCS11 NSS1/2/3/4, HE 20/40/80/160)



Zapraszamy do kontaktu!
Więcej informacji: www.kreski.pl



Specifications are subject to change. Ubiquiti products are sold with a limited warranty described at www.ui.com/support/warranty

©2020 Ubiquiti Inc. All rights reserved. Ubiquiti, Ubiquiti Networks, the Ubiquiti U logo, the Ubiquiti beam logo, UniFi, and UniFi Network are trademarks or registered trademarks of Ubiquiti Inc. in the United States and in other countries. All other trademarks are the property of their respective owners.