

Kreski

Zapraszamy do kontaktu!
Więcej informacji: www.kreski.pl



G **GAMBER
JOHNSON**

ZEBRA
**MATERIAL
HANDLING**

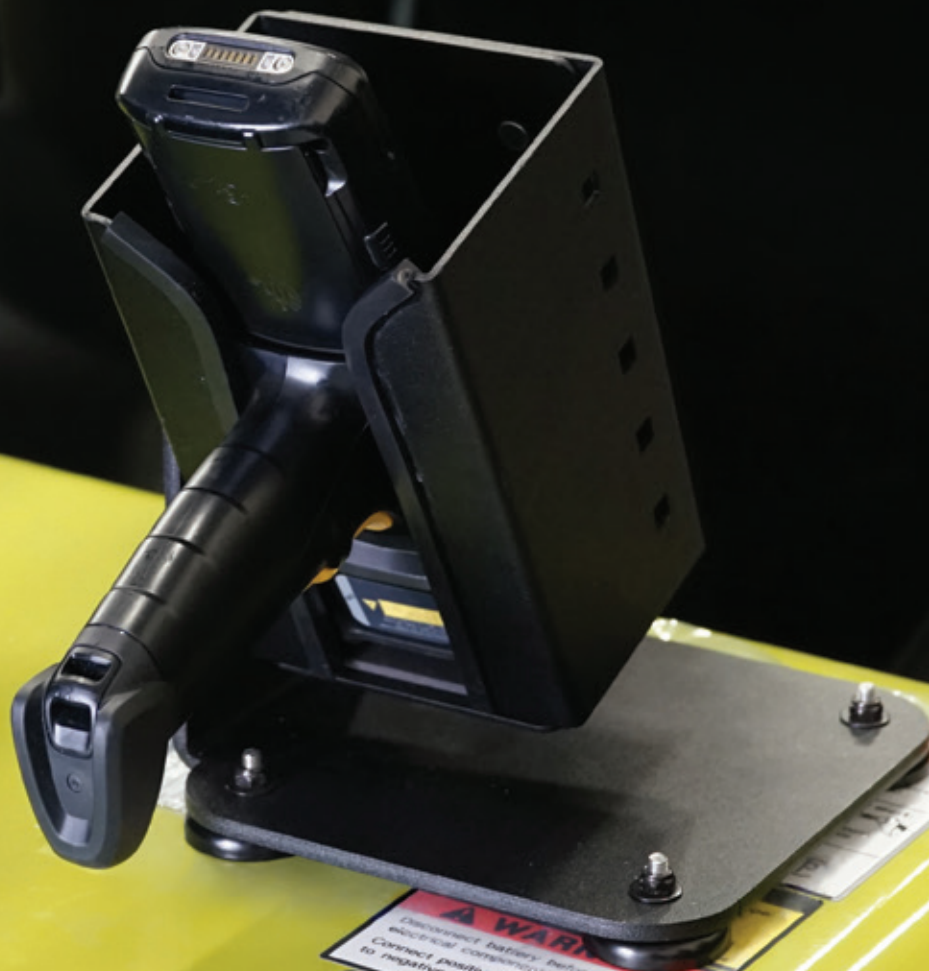
RUGGED. RELIABLE. RESPONSIVE.™

Kreski

SECURE YOUR ASSETS WITH A NAME YOU CAN TRUST

Gamber-Johnson is the global leader in equipment mounting products — driven by our mission of “*supporting technology to help save the world.*” We manufacture components and systems for every mounting solution, all meticulously designed to be **rugged, reliable, and responsive**. Gamber-Johnson is a trusted name in the industry; long known as the go-to partner for major rugged computer OEMs. As a pioneer in design innovation — receiving numerous awards and accolades as an industry leader — Gamber-Johnson has been the preferred choice for decades.

HARNESS THE POWER OF GAMBER-JOHNSON'S LASER-LIKE FOCUS ON INNOVATION WITH THE PERFECT MOUNTING SOLUTION FOR YOUR LIFT VEHICLE.





MOUNTING SOLUTIONS FOR EVERY LIFT VEHICLE

Secure your tablets and equipment with our superior mounting solutions, for ultimate peace of mind. We offer a wide range of turnkey solutions that are configurable for your material handling vehicle's specific make and model. Our ergonomic solutions enhance driver efficiency, reduce installation time, speed up operations, and improve overall workplace safety. To narrow down the best solution for your fleet begin by asking yourself these four important questions:

1. WHAT DEVICE IS BEING MOUNTED?

Identifying your device ensures that you get the correct dock or cradle to support your specific need and desired connectivity.

2. WHAT MODEL VEHICLE IS THE DEVICE BEING MOUNTED TO?

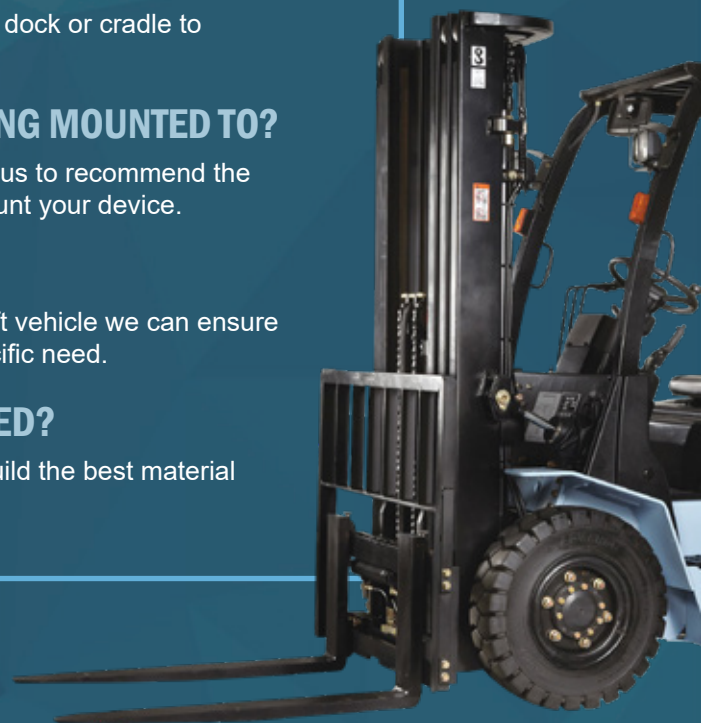
Knowing the make and model of your vehicle will allow us to recommend the best location and corresponding product needed to mount your device.

3. WHAT IS THE VEHICLE'S VOLTAGE?

By knowing the voltage or power requirement of your lift vehicle we can ensure that you get the appropriate power supply for your specific need.

4. WHAT ACCESSORIES ARE BEING MOUNTED?

Understanding your accessory needs will allow us to build the best material handling solution for your team.



Kreski

Zapraszamy do kontaktu!
Więcej informacji: www.kreski.pl



GAMBER-JOHNSON
**CRADLES AND
DOCKING STATIONS**



CRADLES & DOCKING STATIONS

Secure your tablets and other devices with a Gamber-Johnson cradle or docking station. Cradles keep your device safe and secure without port access, while docking stations replicate the device's ports for easy and secure access. Either way — we have a solution that will meet your needs in the most secure, ergonomic configuration possible.

ZEBRA ET50/51/55/56



ET51/56 SLIM DOCKING STATIONS & CRADLES

ITEM NUMBERS | 8" TABLET SIZE:

7160-1506-90 Non-Powered Cradle
7160-1506-10 Powered Cradle, No Port Replication
7160-1506-00 Dual USB Docking Station
7160-1506-20 Docking Station, Full Port Replication with RS232

ITEM NUMBERS | 10" TABLET SIZE:

7160-1576-90 Non-Powered Cradle
7160-1576-10 Powered Cradle, No Port Replication
7160-1576-00 Dual USB Docking Station
7160-1576-20 Docking Station, Full Port Replication with RS232

- Designed for the Zebra ET51/56 rugged tablet computer with rugged frame
- This dock does not accommodate ET51/56 accessories
- Integrated front camera on the ET5X is accessible when the tablet is docked
- Compatible with Windows or Android operating systems
- Access to all control buttons and ports while the tablet is safely docked
- POGO pin connector provides power to charge the Zebra tablet while docked (Available on docking stations and charging cradle)
- Guide pins align the tablet so it is properly positioned while docking
- Keyed lock for security and theft deterrence
- Easy one-hand docking & release operation
- VESA 75 mm and AMPS mounting patterns; compatible with Gamber-Johnson's Zirkona mounting products
- Composite/aluminum design for reduced weight and extended durability
- 3-Year Limited Warranty

CERTIFICATES & TESTING:

- Zebra Certified
- MIL-STD 810G Shock/Vibration Tested
- MIL-STD 810G Environmental Testing: Humidity, High/Low Temperature, (Storage/Operational)
- SAE J1455 Crash Tested
- Cycle Tested: 30K Cycles, Docking Connector, Latching & Locking Mechanisms
- RoHS, FCC, CE Certifications



ET50/55 51/56

ITEM NUMBERS | 8" TABLET SIZE:

7160-0819-00 Non-Powered Cradle
7160-0819-04 Powered Cradle, No Port Replication
7160-0861-00 Docking Station, Full Port Replication with RS232

ITEM NUMBERS | 10" TABLET SIZE:

7160-0818-00 Non-Powered Cradle
7160-0818-04 Powered Cradle, No Port Replication
7160-0860-00 Docking Station, Full Port Replication with RS232

- Designed for the Zebra ET5X Series Enterprise tablets with the "rugged frame" option
- Accommodates the expansion back of the ET50/51 55/56 to easily add accessories (scanner/ hand strap, optional battery bay, and stylus)
- Integrated front camera on the ET5X is accessible when the tablet is docked
- Compatible with either Windows or Android operation systems on the ET50/51 55/56
- Dual latch/locks provide tablet stability when docked
- Guide pins align the tablet so it is properly positioned while docking
- VESA 75mm mounting pattern
- Steel and composite design, rugged construction for long-term durability
- 3-Year Limited Warranty

CERTIFICATES & TESTING:

- Zebra Certified
- ROHS, FCC, CE
- MIL-STD 810G Shock/Vibration
- SAE J1455 Crash Test
- Cycle Tested – Locking and Docking Mechanism



L10

ITEM NUMBERS:

7110-1292 Cradle
7110-1293 Dock/Cradle RF Module
7160-1321-00 Windows Docking Station, No RF
7160-1321-05 Windows Docking Station, 5x RF - SMA
7160-1321-01 Windows Docking Station Module
7160-1453-00 Android Docking Station, No RF
7160-1453-05 Android Docking Station, 5x RF - SMA
7160-1453-01 Android Docking Station Module

- Compatible with the Zebra L10 xPad hard-handle and xSlate tablet computer
- Docking Station design accommodates the L10 Smart Card/CAC Reader module, True Serial(RS232) module, hard handle, soft handle, and shoulder strap
- Sealed docking connector to protect against moisture
- RS232 pin 9 function switch: active switch to power pin 9 (5V)
- LED indicator lights show that "tablet is docked" and "dock is powered"
- Access door to internal USB 2.0 port provides additional security
- Floating docking connector for reliable docking activation
- Bottom-facing I/O ports; integrated cable restraint/cable management system
- Forward facing docking latch/release for easy one handed operation
- Keyed lock for security and theft deterrence
- VESA 75mm and 50mm x 100mm mounting patterns
- Rounded edges to enhance personal safety
- Composite/aluminum design for reduced weight and durability
- Optional RF pass-through SMA - (WWAN Main, GPS, WWAN Aux, WIFI Main, WIFI Aux)
- 3-Year Limited Warranty

CERTIFICATES & TESTING:

- Zebra Certified
- MIL-STD 810G Shock/Vibration
- SAE J1455 Crash Test
- FCC, CE, RoHS, WEEE Certified



ET5X 2-IN-1 ATTACHABLE KEYBOARD

ITEM NUMBERS:

7160-1585-00

- Designed for the Zebra ET5X 10" Series Enterprise tablet without rugged frame (Windows or Android compatible)
- Integrated center touchpad with right and left mouse buttons
- 76-key keyboard with 12 function keys for custom operation
- Silicone rubber keys with white lettering and a rugged polycarbonate case
- POGO pin connector adapter links the tablet to the keyboard
- USB 2.0 port (500mA) to attach a mouse, another peripheral, or flash drive
- Easily connect the tablet to the keyboard; slip the bottom of the tablet into the case and snap the top of the case over the tablet
- All computer features including camera, microphone, speakers, USB-C port and all control buttons are accessible when the tablet is docked onto the keyboard
- Friction hinge and screen footrest with rubber feet position the tablet at a comfortable viewing angle
- Hard carry handle with two attachment rings for shoulder strap improve portability
- Available in US English (7160-1585-00), UK (7160-1585-01), German (7160-1585-02), French (7160-1585-03), Spanish (7160-1585-04), 7160-11585-05 (French CA), and 7160-1585-06 (Thai)
- 1-Year Limited Warranty

CERTIFICATES & TESTING:

- ROHS, REACH, FCC, CE, C-Tick, UKCA
- MIL-STD 810G Environmental: Humidity, High/Low Temperature (Operational/Storage)
- 30,000 Cycle Tested – Insertions and Hinge Mechanism
- Key Cycle Test – 2 Million Press Cycles
- Key Surface Chemical Resistance



TC8000/TC8300

ITEM NUMBERS:

7160-1277 Non-Powered Cradle

7160-1277-01 Powered Cradle

7160-1277-02 Docking Station

- Compatible with both Zebra TC8000 and Zebra TC8300 Handheld Touch Computers
- Lightweight, small form factor designed to be resilient and reliable in harsh material handling and enterprise environments
- Patented slam latch technology allows single handed operation to effortlessly remove the device
- Eliminate daily battery exchanges and device downtime by maintaining charge within your mobile work environment
- Reduce costly damages by safely securing your device
- Included lock for theft deterrence and extra device security
- Offers the ability to utilize the device when secured
- Add additional peripherals by pairing Gamber's Dock with Zebra's USB IO Hub (sold separately)
- 1-Year Limited Warranty

CERTIFICATES & TESTING:

- ROHS, FCC, CE
- MIL-STD 810G Shock/Vibration
- SAE J1455 Crash Test
- Cycle Tested



TC51/52/56/57

ITEM NUMBERS:

7160-1497 Non-Powered Cradle

7160-1497-01 Powered Cradle

7160-1497-02 Rugged Hub Adapter Cradle

- Compatible with the Zebra TC5x Series Handheld Touch Computer (Requires Zebra rugged boot SG-TC5X-EX01-01)
- Cradle accommodates the Zebra TC5x hand strap
- Lightweight, small form factor designed to be resilient and reliable in harsh material handling and enterprise environments
- Reduce costly damages by safely securing your device
- Attaches to Gamber-Johnson mounting solutions using the AMPs hole pattern
- Easy one-handed docking and releasing operation
- 1-Year Limited Warranty



TC70/72/75/77

ITEM NUMBERS:

7160-1509 Non-Powered Cradle

7160-1509-01 Powered Cradle

7160-1509-02 Rugged Hub Adapter Cradle

- Compatible with the Zebra TC7x Series Handheld Touch Computer
- Cradle accommodates the Zebra TC7x hand strap
- Lightweight, small form factor designed to be resilient and reliable in harsh material handling and enterprise environments
- Reduce costly damages by safely securing your device
- Attaches to Gamber-Johnson mounting solutions using the AMPs hole pattern
- Easy one-handed docking and releasing operation
- 1-Year Limited Warranty

CERTIFICATES & TESTING:

- ROHS, FCC, CE
- MIL-STD 810G Shock/Vibration
- SAE J1455 Crash Test
- Cycle Tested

Kreski

Zapraszamy do kontaktu!
Więcej informacji: www.kreski.pl



GAMBER-JOHNSON

**OVERHEAD GUARD
LEG MOUNTS**

CLAM SHELLS

Our Clam Shell line is Gamber-Johnson's staple product when it comes to extending the usability of technology into the mobile world of material handling. Easily attach any device, dock, cradle, or interface plate with the multiple hole patterns featured on the product. Our Clam Shells work to tailor to individual operator comfort and safety by providing a wide range of adjustments for optimal viewing of a device, improved visibility, and proximity to the operator.



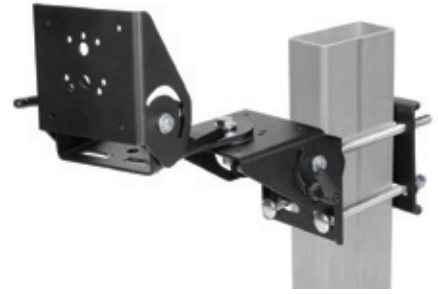
7160-0357
Clam Shell with Small Backer Plate

7160-0370
Clam Shell with Large Backer Plate



7160-0366
Dual Clam Shell with Small Backer Plate

7160-0367
Dual Clam Shell with Large Backer Plate



7160-0420
Dual Clam Shell with Arm and Small Backer Plate

7160-0421
Dual Clam Shell with Arm and Large Backer Plate

ROLL FORM BRACKETS

We have the ideal products for every mounting situation; including lift vehicles that have roll formed overhead guard legs. These brackets conform perfectly to various roll formed profiles ultimately creating a solid foundation to adapt our Clam Shell product line.



7160-0418
For Yale/Hyster, Crown, and others

7160-1542
For CLARK

7160-0814
For Jungheinrich / CAT / Toyota

7160-0815
For Linde Models EV-30 and EV40

Zirkona DIAMOND PLATE MOUNTS

When it comes to mounting lightweight devices turn to Gamber-Johnson's diamond plate mounts for a reliable solution. Multiple product offerings to interface your device with various hole patterns and ample adjustability to accommodate operator comfort and ease of use.



7160-1261
Zirkona 4" Diamond Plate with Large Joiner and AMPS/NEC Plate

7160-1261-01
Zirkona 4" Diamond Plate with Large Joiner and VESA 75mm Plate

CAB MOUNTS

Secure your valuable tablets and devices right in the cab of your material handling vehicle using one of our reliable OEM specific mounts. Perfectly suited to tailor your workspace to the most efficient, ergonomic, and secure configuration, all while protecting your valuable assets and lift vehicle operators.



7160-1151
Toyota Cab Latch Mount
for Electronic Hydraulics



7160-1233
Toyota Cab Mount



7160-1096
Clamp Bracket Adapter



7160-1103
Linde E30 Latch Mounting Bracket



7160-1278
Yale Hyster 40/70 Cab Mount



7160-1109
Yale/Hyster Electric Bracket

HORIZONTAL EXTENSION

Increase your usable mounting space with our horizontal extension giving you more room to mount a total solution. Compatible with all Gamber-Johnson's roll formed and tube clamp brackets to ensure secure fitment to any overhead guard leg profile.



7160-0363
Horizontal Extension Bar

TUBE CLAMP MOUNTS

Expand your mounting location options by connecting your solution to multiple sizes of cylindrical poles, handles, or tubular style overhead guard legs. Adapt a Clam Shell product to finalize the total solution.



7160-0561
2", 2.5", 3" Diameter Tube Clamp



7160-1356-01
Zirkona 2" to 3" Pole Mount with VESA 75mm Mounting Plate

7160-1356
Zirkona 2" to 3" Pole Mount with AMPS/NEC Mounting Plate



7160-1367-01
Zirkona 3/4" to 1 7/8" Pole Mount with VESA 75mm Mounting Plate

7160-1367
Zirkona 3/4" to 1-7/8" Pole Mount with AMPS/NEC Mounting Plate





Kreski

Zapraszamy do kontaktu!
Więcej informacji: www.kreski.pl



GAMBER-JOHNSON **OVERHEAD GUARD MOUNTS**



OVERHEAD GUARD MOUNTS

Increase your operator's forward visibility by tucking your device up and out of the way. Directly mount from the overhead guard using various ergonomic options that best fit a wide variety of operator needs and preferences.



7160-1156
Short Overhead Bar Mount



7160-1156-01
Tall Overhead Bar Mount



7160-1591-01
Tall Adjustable Overhead
Guard Bar



7160-0856
Vertical
Extension Bar



Kreski

Zapraszamy do kontaktu!
Więcej informacji: www.kreski.pl

GAMBER-JOHNSON
PERIPHERAL MOUNTS



POWER SUPPLIES, WIRING KITS & MOUNTS

Protect and power your valuable devices by pairing them with a clean, stable power source to guarantee functionality and longevity. Combine with a Gamber-Johnson Wiring Kit and Power Supply Mount for a professional look and quick installation.



LIND Isolated Power Supply
*See website for full assortment



7300-0482
Wiring Kit



7160-1333
Power Supply Clamp



KEYBOARD MOUNTS

Configure your keyboard for ultimate ease of use and the fastest possible access with our large selection of Keyboard Mounts. With an ergonomic angle that meets user needs, working on the keyboard in the field can be more streamlined and reliable than ever before.



7160-0799
Tablet Keyboard Mount



7160-1257
Vertical Tablet Keyboard Mount



7160-0984
Low Profile Tablet Keyboard Bracket



7160-0859
Number Pad Bracket



7160-1449-00
Rugged Lite Keyboard



iKey Rugged Keyboard
*See website for full assortment

HANDHELD SCANNER MOUNTS

Safeguard handheld scanners from accidental drops and catastrophic damage by housing your device with the right mount to fit your operation's needs.



7160-1380
Pistol Grip Scanner Bracket
7170-0764
Zirkona, Pistol Grip Scanner Mount



7160-1389
Scanner Pocket Tablet Mount



7160-1259
Flat Surface Magnet Mount with
Scanner Holder



7160-1306
Scanner Pocket Mount with Small
Back Plate

SAFETY LIGHT MOUNTS

Mount safety lights to present a visual alert to help increase warehouse safety, minimize the risk of accidents, and improve visible awareness of approaching lift vehicles.



7160-0610
Single Light Bracket



7160-0611
Single Light Bracket



7160-0850
TYRI Redline Light Mount

Explore our full
assortment of material
handling mounts at
GAMBERJOHNSON.COM



PRINTER MOUNTS

Continue to expand from a desk to a mobile work environment by creating a secure and accessible way to mount rugged mobile printers.



7160-0888
Datamax O'Neil RL4 Printer Bracket



7160-0817
Zebra ZQ630/QLN420 Printer Bracket



7160-1473
Zebra ZQ620 Printer Bracket

*See website for full assortment

PROTECTIVE COVERS

Encase your device with Gamber-Johnson's patented selection of thermal and non-thermal protective covers. Designed to keep your device safe from the harsh elements in unforgiving work environments that could prematurely destroy your assets.



7160-0949 - 8" Protective Cover
7160-0950 - 10" Protective Cover
7160-0981 - 8" Thermal Protective Cover
7160-0982 - 10" Thermal Protective Cover



READY TO MAKE A PURCHASE?

Find a dealer in your area:
gamberjohnson.com/FindAReseller

HAVE ADDITIONAL QUESTIONS?

Contact our experts:
sales@gamberjohnson.com



Zapraszamy do kontaktu!
Więcej informacji: www.kreski.pl



RUGGED. RELIABLE. RESPONSIVE.™