



## GODEX Industrial Grade **GX4000i series** Printer

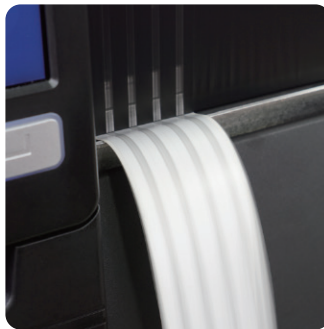


Ultra-high speed Industrial Thermal Printer with an intuitive 5" video touch screen.

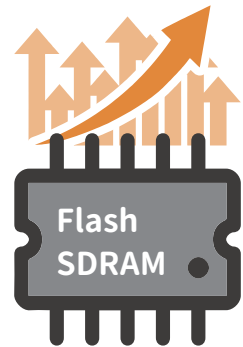
The GODEX GX4000i, in its 600 dpi version, produces razor sharp results while maintaining the fastest 600 dpi throughput at 8 IPS. The GX4000i comes fully equipped to support your most demanding applications. With a robust steel design, the GX4000i will thrive in all environments.



- Equipped with a 5" LCD touch screen and 16GB of storage the GX4000i offers intuitive controls along with a built in video assistance guide printer operation has never been easier.



- The GX4000i series offers a variety of resolutions to meet all high-volume and demanding applications. Top speeds include 16 inches per second at 203 dpi, 12 inches per second at 300 dpi and 8 inches per second at 600 dpi.
- With a robust aluminum cast frame, the GX4000i can withstand the most demanding environments while maintaining the intricacies of precision printing.



- Equipped with 256MB of flash memory, the GX4000i has more than enough storage for 1000's of labels, fonts and/or images, making standalone functionality far more flexible.
- Equipped with 256MB of SDRAM, the GX4000i will print large batch files seamlessly while maintaining superior throughput.

# GX4000i Series Printer Specification



Model	GX4200i	GX4300i	GX4600i
Print Method	Thermal Transfer / Direct Thermal		
Resolution	203 dpi (8 dot/mm)	300dpi (12 dot/mm)	600dpi (24 dot/mm)
Print Speed	16 ips (406.4 mm/s)	12 ips (304.8 mm/s)	Up to 8 ips (203.2 mm/s)
Print Width	4.09" (104mm)	4.16" (105.7mm)	4.16" (105.6mm)
Print Length	0.16" (4 mm)** to 180" (4572 mm)	0.16" (4 mm)** to 100" (2540 mm)	0.16" (4 mm)** to 30" (762 mm)
Processor	32 Bit RISC CPU		
Memory	Printer : 256MB Flash (128MB for user storage); 256MB SDRAM 16GB for display		
Sensor Type	Adjustable reflective sensor and transmissive sensor, left aligned		
Media	Types: Continuous form, gap labels, black mark sensing, and punched hole; label length set by auto sensing or programming Width (Tear): 1" (25.4 mm) Min.; 4.64" (118 mm) Max. Width (Cutter): 4.61" (117 mm) Max. Width (Dispenser / Rewind): 4.64" (118 mm) Max. Thickness: 0.003" (0.06 mm) Min.; 0.01" (0.25 mm) Max. Label roll diameter: 8" (203.2 mm) Max. Core diameter: 1.5"-3" (38.1mm -76.2mm)		
Ribbon	Types: Wax, wax/resin, resin Length: 1476' (450 m) Max. Width: 1.18" (30 mm) Min.; 4.33" (110 mm) Max. Ribbon roll diameter: 3" (76.2 mm) Core diameter: 1" (25.4 mm)		
Printer Language	EZPL, GEPL, GZPL, GDPL auto switch		
Software	Label design software: GoLabel (for EZPL only) Driver: Windows 8 & 8.1, Windows 10, Windows Server 2008 R2, 2012, 2012 R2, 2016, 2019, MAC, Linux SDK: Win CE, .NET, Windows Vista, Windows 7, Windows 8 & 8.1, Windows 10, Android, Mac, iOS		
Resident Fonts	Bitmap fonts: 6, 8, 10, 12, 14, 18, 24, 30, 16X26 and OCR A & B Bitmap fonts 90°, 180°, 270° rotatable, single characters 90°, 180°, 270° rotatable Bitmap fonts 8 times expandable in horizontal and vertical directions Scalable fonts 90°, 180°, 270° rotatable		
Download Fonts	Bitmap fonts 90°, 180°, 270° rotatable, single characters 90°, 180°, 270° rotatable Asian fonts 90°, 180°, 270° rotatable and 8 times expandable in horizontal and vertical directions Scalable fonts 90°, 180°, 270° rotatable		
Barcodes	1-D Bar codes : China Postal Code, Codabar, Code 11, Code 32, Code 39, Code 93, Code 128 (subset A, B, C), EAN-8/EAN-13 (with 2 & 5 digits extension), EAN 128, FIM, German Post Code, GS1 DataBar, HIBC, Industrial 2 of 5, Interleaved 2-of-5 (12 of 5), Interleaved 2-of-5 with Shipping Bearer Bars, ISBT-128, ITF 14, Japanese Postnet, Logmars, MSI, Postnet, Plessey, Planet 11 & 13 digit, RPS 128, Standard 2 of 5, Telepen, Matrix 2 of 5, UPC-A/UPC-E (with 2 or 5 digit extension), UCC/EAN-128 K-Mart and Random Weight 2-D Bar codes : Aztec code, Code 49, Codablock F, Datamatrix code, MaxiCode, Micro PDF417, Micro QR code, PDF417, QR code, TLC 39, GS1 Composite		
Code Pages	CODEPAGE 437, 850, 851, 852, 855, 857, 860, 861, 862, 863, 865, 866, 869, 737 WINDOWS 1250, 1251, 1252, 1253, 1254, 1255 Unicode (UTF8, UTF16)		
Graphics	Resident graphic file types are BMP and PCX, other graphic formats are downloadable from the software		
Interfaces	Serial port: RS-232 (DB-9) USB Device port (B-Type) 3 USB Host ports (A-Type). 2 ports at the front panel, 1 port at the rear panel IEEE 802.3 10/100Base-Tx Ethernet print server (RJ-45)		
RTC	Standard		
Control Panel	Backlight 5" touch screen LCD supports on-board videos 1 Power on/off button with blue color LED backlight 1 Control key: FEED/PAUSE/CANCEL with dual color (green/red) LED backlight 1 Calibration button at the rear panel		
Power	Auto Switching 100-240VAC, 50-60Hz		
Environment	Operation temperature: 41°F to 104°F (5°C to 40°C) Storage temperature: -4°F to 140°F (-20°C to 60°C)		
Humidity	Operation: 30-85%, non-condensing. Storage: 10-90%, non-condensing.		
Agency Approvals	CE(EMC), FCC Class B, CB, cUL, BSMI, BIS, KC, CCC, EAC, UKCA		
Dimension	Length : 465 mm Width : 263 mm Height : 310 mm		
Weight	30 lbs (13.6 Kg), excluding consumables		
Options	Cutter module (User install) – Rotary cutter, Guillotine cutter, Perforation cutter, High speed cutter, Paper card cutter Label dispenser + Internal rewinder module (Dealer install) BT 2.1 BT 4.0 WiFi print server module (IEEE 802.11b/g/n) Applicator Interface (DSUB female 15-pin) RFID (UHF) R/W module (project option) External label unwinder External label rewinder		

\*Specifications are subject to change without notice. All company and/or product names are trademarks and/or registered trademarks of their respective owners.

\*\*Minimum print height and maximum print speed specification compliance can be dependent on non-standard material variables such as label type, thickness, spacing, liner construction, etc. GoDEX is pleased to test non-standard materials for minimum print height, and maximum print speed capability.

\*\*\* The safety certification marks may be different depending on sales regions.



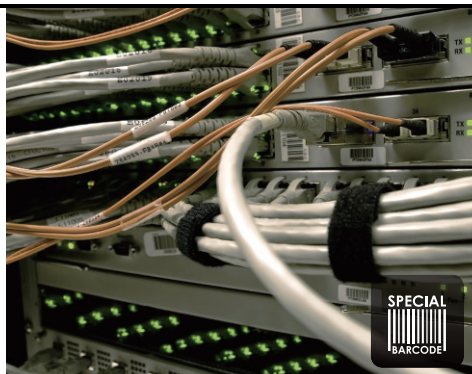
# Applications

## Applications for Labels & Barcodes

The GX4000i series is extremely versatile and works well for most applications.

**Kreski**

Zapraszamy do kontaktu!  
Więcej informacji: [www.kreski.pl](http://www.kreski.pl)



### Special Materials

Small components labeling, name  
Plates, Plastic tubes, Plastic cards,  
Cable labeling.

### Warehouses, Logistic & Transportation

Stack label, Product label, Postal slip  
Storage management, Dispatch label,  
Packaging label, Delivery receipt, etc.

### Manufacturing

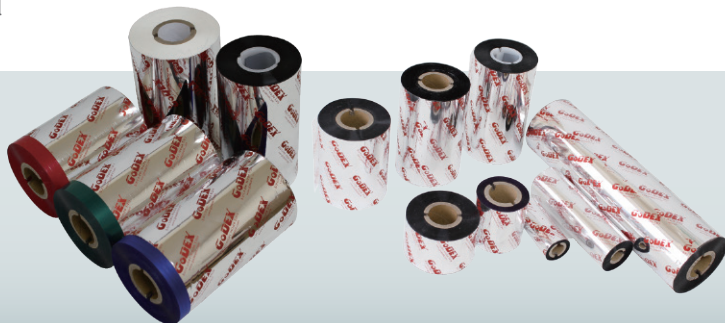
Product label, Content label,  
Packaging label, Administrative slip,  
In & Out record slip, etc.

## GoDEX RIBBONS

High quality original GODEX thermal  
transfer ribbons

GODEX offers premium thermal transfer ribbons  
that will fit most of your printing applications.

- Wax
- Wax/ Resin
- Resin
- Near Edge



## GoDEX LABEL DESIGN SOFTWARE

GoLabel & GoLabel II Software /  
User Friendly

GoLabel & GoLabel II are based on a WYSIWYG (what  
you see is what you get) user interface, making it so  
easy for you to create and print barcode labels.  
GoLabel & GoLabel II are the first-choice in FREE  
label design software that you don't want to miss!

Go visit [www.godexintl.com](http://www.godexintl.com) and download GoLabel &  
GoLabel II to experience it!



**GoDEX**  
[www.godexintl.com](http://www.godexintl.com)

Godex International  
(Headquarters)  
Telephone: +886 2 2225 8580  
Contact us: [infoGT@godexintl.com](mailto:infoGT@godexintl.com)

Godex Americas  
Telephone: +1 805 987 5100  
Contact us: [infoGA@godexintl.com](mailto:infoGA@godexintl.com)

Godex China  
Telephone: +86 21 56651313  
Contact us: [infoGC@godexintl.com](mailto:infoGC@godexintl.com)

Godex Europe  
Telephone: +49 2195 59599 0  
Contact us: [infoGE@godexintl.com](mailto:infoGE@godexintl.com)