

Unitech Mobility Orchestra Solution

Unitech Mobility Orchestra Solution guarantees the usability of its delivered products and taking care the traceability during the lifetime of the product in use.



Unitech Mobility Orchestra Solution aims to empower usability, traceability and sustainability to safeguard user's investment with Unitech mobility devices from birth to retirement. It includes 4 components: 12Solutions, StageGo, UnitCare and Mobolink Visibility.



The Benefits of Unitech's Orchestra Service:

- Improve User Experience
- Unprecedented Power of Visibility
- Free applications to deliver value
- Improve Productivity
- Protect your investment and assets
- Mobility Orchestra Visibility Dashboard View



Zapraszamy do kontaktu!
Więcej informacji: www.kreski.pl

1. UnitCare Service Coverage

UnitCare protects your investment of installed devices to be served at best quality. Go beyond the standard warranty and protect your investment against accidental damage, normal wear and tear and more with UnitCare, a convenient, direct pre-packaged service from Unitech. With UnitCare we offer you a reliable, high-quality and effective service program for getting your devices serviced or repaired quickly! Keep your mobile computers and scanners running at peak performance which will result in increased productivity and satisfaction that drives out the hidden costs of your installations.

- Protect your assets against accidental damage, wear, tear and more.
- Create a customised package by additional supplements.
- Keep your assets protected at your preferred demands
- Minimalize risk and remain at high performance
- Reduces license costs, by selecting only the necessary
- Reduce the total cost of ownership
- Service in your region, 5 different service locations in Europe and continue expanding



Unitech Service Center is located in Kalisz, Poland



Zapraszamy do kontaktu!
Więcej informacji: www.kreski.pl

2. MoboLink | Traceability and Visibility

With our compliment, we have pre-paid the license fee of **Mobolink Visibility** for you. You can benefit from the package to issue your RMA ticket, tracing your RMA, managing RMA contract, retrieving RMA statistic reports. There is no other solution will make your RMA management so easy.

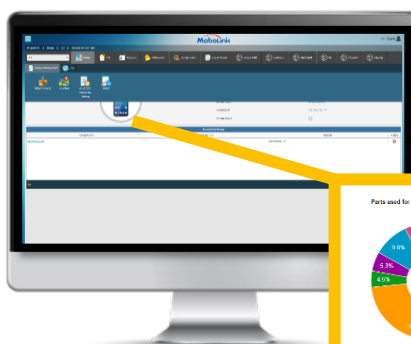
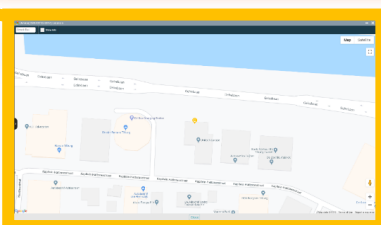
Above all, the package will also provide you the feature to trace the health condition of your device, locating your device, so you know where they are, who is using them and how your devices are threaten by users (we can collect drops on the floor). Three parents indicated an interest in serving on the committee. August Bergqvist will follow up with those parents and do some additional recruiting to fill these openings.



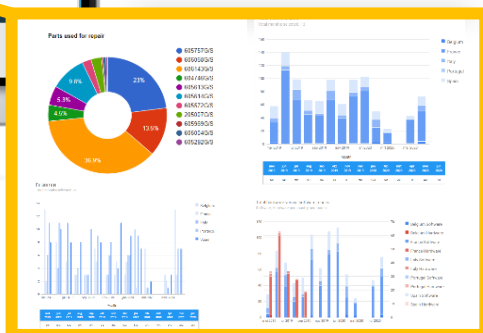
Asset, health/status, health-history
Asset locations
Unattended Event/Alert Notification
RMA and contract management



Never loss your asset Locating
management

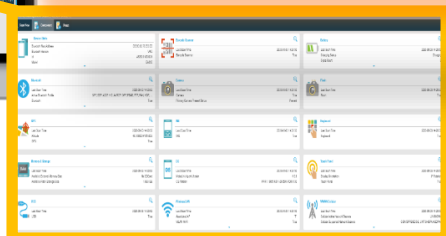


KPI Reports





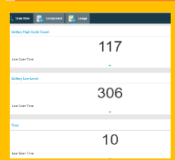
Visibility of health of device (drops, battery, etc.)
Visibility of connected status of device
Visibility of resource usage status



This feature is subject available to limited models, like PA760 and EA630 only.

Battery health management:

- Charged cycle
- Battery condition
- Battery temperature



RMA status overview



RMA Overview

In Progress	2020	RMA NO	Serial NO						
Company:	RMA no.:		Issued:	Arrived:	In Progress:	Finished:	Shipped:	Progress Halt:	
TimCod Sud-Ouest	RMA20-5793		4-3-2020	4-3-2020	4-3-2020				
Unitech Europe	RMA20-5794		4-3-2020	4-3-2020	4-3-2020				
Peripheral Systems Iberica, SL	RMA20-5799		10-3-2020	17-3-2020	31-3-2020				
Peripheral Systems Iberica, SL	RMA20-5800		11-3-2020	17-3-2020	31-3-2020			31-3-2020	
Bartech, s.r.o.	RMA20-5808		6-5-2020	11-5-2020	26-5-2020			26-5-2020	
Unitech Europe	RMA20-5809		14-5-2020	18-5-2020	27-5-2020			27-5-2020	

Push RMA request including health details to most nearby service center

No re-entry, seamless integration with RMA portal

3. StageGo | Easy Deployment

The Unitech **StageGo** tool helps you to set up a device with auto-configuration on-the-fly. It will make your deployment worry free and easy by including following features:

- Swift and effortless device staging for Unitech android mobile devices
- Device staging becomes more accessible, time-efficient and secure
- Complete staging control at your fingertips
- Security patches deployment
- No Installation required
-

Unitech Android devices come preinstalled with software solutions that aim to take your mobile agility and productivity to the next level.

4. 12Solutions | Improve Usability

With Unitech software tool **12Solutions**, provides great enhancements to user experience and management needs. Turn standard into enterprise purpose. These are all included in the price you have paid. No extra cost or license fee to worry about.

Features:

- Complimentary application
- Elauncher
- Kiosking
- Settings (personalized set of settings available to user/s)
- uBrowse (enterprise/kiosk browser)
- OSupdater / MoboLink Visibility

5. EOMConfig

Unitech cares about your migration path during the lifetime of our product in use. When you will upgrade your EEM/ MDM, Unitech is ready to help with our OEMConfig, which is a Google AER certified component to work with any Google AER certified EMM solution from SOTI, AirWatch, and so on. It will allow your using AER EMM to perform Unitech Applications Settings User Restrictions (such as Camera, barcode scanner and so on) and Android Settings (such as WiFi setting, language, display, etc).

6. Unitech Productivity Solutions | Traceability and Visibility

Unitech offers a number of productivity solutions to improve the agility and efficiency of your everyday tasks. Mix-match the management and productivity solutions from Unitech and create the ideal workflow for your business.



File Manager

Manage files and directories on the internal and external storage options. You can even zip a directory into a single zip file, share it via Bluetooth, Email or Online Storage, and to extract a zip file all with just a few taps.



UNote

UNote is a simple text editor. You can use UNote to save scanned barcodes, open and view log files for troubleshooting, and much more.



Startup

Startup lets you autorun apps when the device boots up. You can define the apps to be autorun and the sequential orders where they should run.



Scan Service

Configure all scanner settings with a friendly user interface and enable the service to make scanning data as keypad input.



Key Remap

Reprogram physical buttons to act as another key or to launch an app.



WLAN Advanced

Configure advanced WLAN settings such as power-saving mode and roaming parameters.