

# SUNMI T3 PRO MAX Smart Desktop Terminal

The next level of Android desktop.



## Flagship performance unlocks extraordinary user experience.

High performance octa-core 6nm processor, up to 2.7Ghz. Equipped with large-capacity memory of 6GB RAM+128GB ROM to deliver premium-tier features.

## Pioneering in engineering.

The sleek yet durable aluminum alloy design strikes the perfect balance between weight, ruggedness and appearance. The bezel-less high definition display comes with a high-transparency anti-fingerprint coating.

## Interactive design for an ultimate user perception.

Designed with NFC tap on screen for both the main screen and customer facing screen (optional). Easily detachable customer display that comes with a 1.5m extension cord to improve flexibility.

## Have your device tailored to your brand.

Apply your logo and brand color to the device to show your brand personality.

## A modular design with an internal high-speed 80mm Seiko printer.

Navigate your rush hours like a pro with quick printing. The printhead is easy to remove and install, greatly cutting your maintenance cost.

## Display Options

15.6" +10.1"

Main 15.6" FHD,1920\*1080  
Secondary 10.1" HD, 1280\*800



15.6" +15.6"

Main 15.6" FHD,1920\*1080  
Secondary 15.6" FHD,1920\*1080



15.6"

Single 15.6" FHD,1920\*1080



## Flipable Main Display

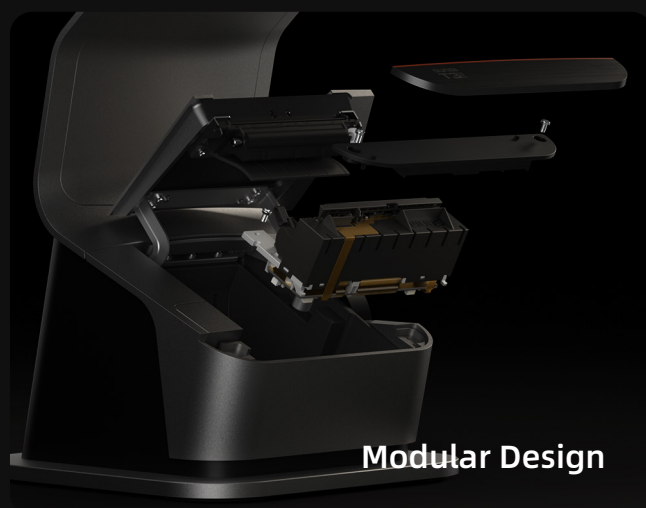




1.5m Extension Cord



Hidden Cabling



Modular Design

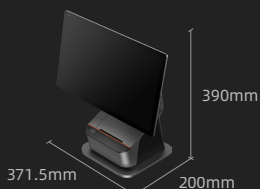
## SUNMI T3 PRO MAX Tech Specs

<b>Product Model</b> L15A1	<b>OS</b> SUNMI OS (based on Android 13)	<b>CPU</b> Kyro-670 Qualcomm octa-core up to 2.7GHz	<b>Memory</b> 6GB RAM+128GB ROM	<b>Display</b> 15.6" FHD 1920*1080 400nits, anti-fingerprint (AF)
<b>Camera</b> Front camera, single lens, 8MP	<b>Card Reader</b> NFC on screen	<b>External Memory</b> 1*MicroSD (TF card) Up to 2TB supported	<b>Speaker</b> 2* 2W	<b>Network</b> LAN 1000M
<b>Wi-Fi</b> 2.4GHz & 5GHz & 6GHz IEEE 802.11 a/b/g/n/ac/ax supported	<b>Bluetooth</b> Bluetooth 5.2 and BLE supported BT Long Range (farthest distance 200m) supported	<b>Indicator Light</b> Power indicator light	<b>Ports</b> 3*USB 2.0 Type A port 1*USB 3.0 Type A port 1* USB Type C 2*Micro USB port 1* Micro-USB debug port 1*RJ45 1*RJ11 1*RJ12 1*DC	<b>Printer</b> Built-in 80mm thermal printer Auto cutter: equipped Print speed: 250mm/s Paper roll OD: 80mm
<b>Accessories</b> 15.6" separate monitor, FHD 1920*1080 10.1" separate monitor, HD 1280*800	<b>Power Adapter</b> Input: AC 100~240V/1.7A Output: DC 24V/2.5A	<b>Weight</b> T3 PRO MAX: 5.5kg 15.6" separate monitor: 1.7kg 10.1" separate monitor: 0.9kg	<b>Buttons</b> 1*Power button (lock screen and fingerprint recognition) 1*Download button (hidden hole)	<b>Environment</b> Operating temp.: 0°C~40°C Storage temp.: -20°C ~ 60°C



### Dimensions

390mm\*371.5mm\*200mm



Zapraszamy do kontaktu!  
Więcej informacji: [www.kreski.pl](http://www.kreski.pl)

\*Data regarding dimension and weight tested internally at SUNMI labs, actual results may be slightly different according to different measurement methods.